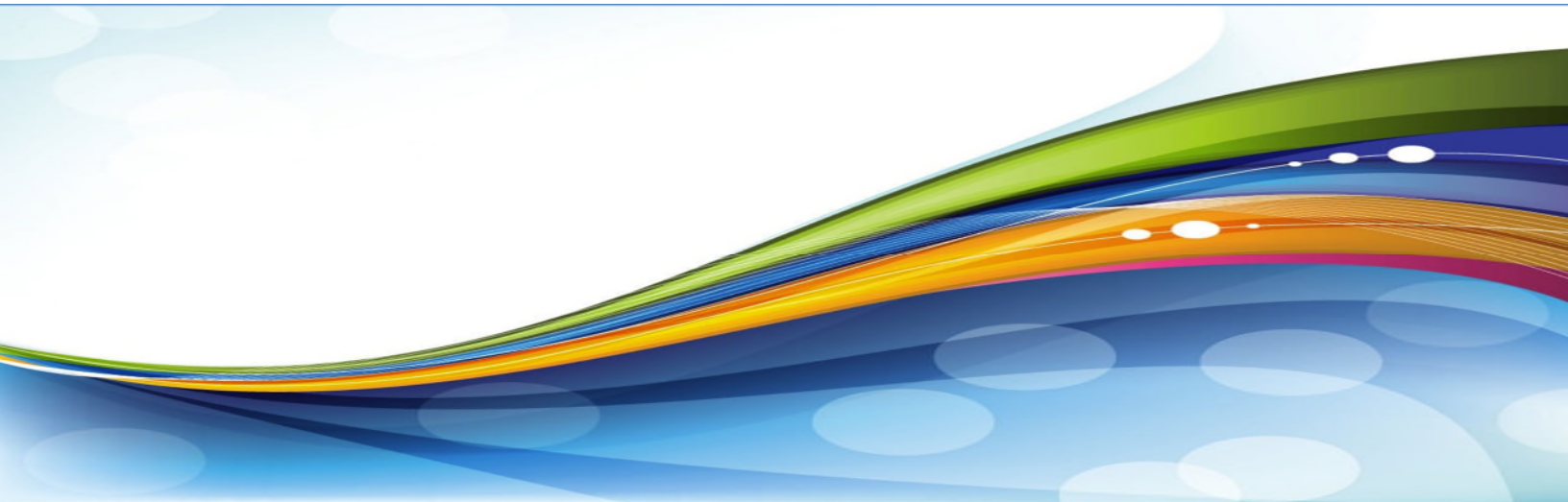




Henry and Benton Counties, MO

on behalf of Golden Valley Memorial Healthcare,
Henry County Health Center and Compass Health Network

Community Health Needs Assessment Round #2



December 2016

VVV Consultants LLC
Olathe, KS

Community Health Needs Assessment Table of Contents

I. Executive Summary.....	P2
II. Methodology	P8
a) CHNA Scope and Purpose	
b) Local Collaborating CHNA Parties <i>(The identity of any and all organizations with which the organization collaborated and third parties that engaged to assist with the CHNA)</i>	
c) CHNA and Town Hall Research Process <i>(A description of the process and methods used to conduct the CHNA, a description of how the organization considered the input of persons representing the community, and an explanation of the process / criteria used in prioritizing such needs)</i>	
d) Community Profile <i>(A description of the community served by the facility and how the community was determined)</i>	
III. Community Health Status	P30
a) Historical Health Statistics (Secondary Research)	
b) Community Feedback Research	
IV. Inventory of Existing County Health Resources	P43
a) <i>A description of the existing healthcare facilities and other resources within the community available to meet the needs identified through the CHNA</i>	
V. Detail Exhibits	P62
a) Patient Origin and Access to Care	
b) Town Hall Attendees, Notes and Feedback <i>(Who attended with qualifications)</i>	
c) Public Notice and News	
d) Primary Research Detail	

* *Italic lines note IRS requirements*

I. Executive Summary

[VVV Consultants LLC]

I. Executive Summary

Creating healthy communities requires a high level of mutual understanding and collaboration among community leaders. The development of this assessment brings together community health leaders and providers, along with local residents, to research and prioritize county health needs and document community health delivery successes. This health assessment will serve as the foundation for community health improvement efforts for the next three years. The last CHNA for Golden Valley Memorial Healthcare (Primary Service Area) was published in December 2013. The Patient Protection and Affordable Care Act (ACA) requires not-for-profit hospitals to conduct a CHNA every three years and adopt an implementation strategy to meet the needs identified by the CHNA. This assessment was coordinated and produced by VVV Consultants LLC (Olathe, Kansas) under the direction of Vince Vandehaar, MBA.

This CHNA has been prepared on behalf of Golden Valley Memorial Healthcare (GVMH), Henry County Health Center (HCHC) and Compass Health Network (CHN). The Primary Service Area (PSA) named for this CHNA includes both Henry and Benton Counties in Missouri. (Note: Both GVMH and HCHC facilities are located in Henry County, Missouri. Although CHN serves other counties throughout Missouri and Louisiana, this CHNA focuses on the service delivery area for CHN's Clinton, Windsor and Warsaw offices only.)

A CHNA provides benefits to local health service organizations, the hospital, the public health department, as well as other community providers & stakeholders in the following ways: 1) Increases knowledge of community health needs and resources; 2) Creates a common understanding of the priorities of the community's health needs; 3) Enhances relationships and mutual understanding between and among stakeholders; 4) Provides a basis upon which community stakeholders can make decisions about how they can contribute to improving the health of the community; 5) Provides rationale for current and potential funders to support efforts to improve the health of the community; 6) Creates opportunities for collaboration in delivery of services to the community; and 7) Provides guidance to the hospital and local health department for how they can align their services and community benefit programs to best meet needs.

CHNA Town Hall "Community Health Strengths" cited for PSA are as follows:

Golden Valley Memorial Hospital (Primary Service Area) - "Community Health Strengths"			
#	Topic	#	Topic
1	Depth of services at GVMH	11	FQHC services
2	Smoke-free community	12	Caring community not turning patients down
3	Access to exercise / recreation	13	Proactive law enforcement
4	Increased local health partnerships (Royal Oaks, GVMH, Pathways, HCHC)	14	Strong schools in Clinton with curriculum for living healthy lifestyles
5	Access to higher education	15	Low cost of living
6	First responders	16	Youth sports opportunities
7	Quality Primary Care	17	Visiting specialists
8	Quality Home Health services	18	Good economy
9	Free access to community wellness facility	19	Several Mental Health providers

Town Hall “Community Health Changes and/or Improvements” cited for PSA are as follows:

2017 Community Health Needs				
Golden Valley Memorial Healthcare - Primary Service Area				
Town Hall Priorities (35 Attendees with 150 Votes)				
#	Health Needs to Change and/or Improve	Votes	%	Accum
1	Economic Development	22	14.7%	14.7%
2	Drug Abuse (Heroin, Marijuana, Meth, Prescription)	20	13.3%	38.0%
3	Emergency Department	15	10.0%	24.7%
4	Obesity (Nutrition, Fitness)	15	10.0%	48.0%
5	Healthcare Transportation	13	8.7%	56.7%
6	Awareness of Mental Health Specialty Services	11	7.3%	64.0%
7	Urgent Care Services	11	7.3%	71.3%
8	Services for Autistic Children / Adults	8	5.3%	76.7%
Total Town Hall Votes		150	100.0%	
Other Items Noted: Homeless Shelter, Access to Dental Services for Low-Income / Medicaid, Cancer Care, Visiting Specialists (Derm, Pediatric Psych, Podiatry, Pulm, Surg), Domestic Violence Shelter, Tobacco, Bullying and Family Support.				

Key Secondary Research Community Health Needs Assessment conclusions:

MISSOURI HEALTH RANKINGS: Per the 2016 RWJ County Health Rankings study, Henry County, Missouri had the highest State of Missouri ranking (of 115 counties) in Clinical Care.

TAB 1. Demographic Profile
TAB 2. Economic/Business Profile
TAB 3. Educational Profile
TAB 4. Maternal and Infant Health Profile
TAB 5. Hospitalization / Providers Profile
TAB 6. Behavioral Health Profile
TAB 7. Risk Indicators & Factors
TAB 8. Uninsured Profile
TAB 9. Mortality Profile
TAB 10. Preventative Quality Measures

- TAB 1: Henry County has a population of 21,737 residents as of July 1, 2015, lower than the Missouri Rural Norm of 27,995. The percent change in population in Henry County from April 1, 2010 to July 1, 2015 is -2.4%, higher than the Missouri Rural Norm of -0.7%. The percent of persons 65 years and over in Henry County is 20.9%, higher than the Missouri Rural Norm of 18.6%. The percent of white alone persons in Henry County is 95.5%, higher than the Missouri Rural Norm of 93.5%. The percent of black or African American alone persons in Henry County is 1.4%, lower than the Missouri Rural Norm of 3.2%. The percent of American Indian and Alaska Native alone persons in Henry County is 0.7%, lower than the Missouri Rural Norm of 5.5%. The percent of persons 5+ years in Henry County where a language other than English is spoken at home is 1.6%, lower

than the Missouri Rural Norm of 3.3%. The population per square mile in Henry County is 32.0, lower than the Missouri Rural Norm of 43.6. Henry County is 24.8% rural, lower than the Missouri Rural Norm of 62.5%. The percent of persons in poverty in Henry County is 18.3%, higher than the Missouri Rural Norm of 16.5%. The percent of children in poverty in Henry County is 26.0%, higher than the Missouri Rural Norm of 23.8%. There are 2,150 veterans in Henry County, lower than the Missouri Rural Norm of 2,562. There are 15,924 registered voters in Henry County, lower than the Missouri Rural Norm of 18,985.

- TAB 2: The median household income (in 2014 dollars) in Henry County is \$39,880, lower than the Missouri Rural Norm of \$42,709. The per capita income in the past 12 months (in 2014 dollars) in Henry County is \$22,230, higher than the Missouri Rural Norm of \$21,556. The number of housing units in Henry County is 10,864, lower than the Missouri Rural Norm of 12,542. The median value of owner-occupied housing units in Henry County is \$93,200, lower than the Missouri Rural Norm of \$102,319. The total number of households in Henry County is 9,545, lower than the Missouri Rural Norm of 10,715. The percent of person age 1 year+ living in the same house as one year ago in Henry County is 83.5%, lower than the Missouri Rural Norm of 85.4%. The percent of residents who are low income and have low access to a grocery store in Henry County is 11.0%, higher than the Missouri Rural Norm of 6.8%. The percent of seniors in Henry County who have low access to a grocery store is 5.1%, higher than the Missouri Rural Norm of 3.2%.
- TAB 3: The percent of persons age 25+ years in Henry County with a Bachelor's degree or higher is 15.1%, lower than the Missouri Rural Norm of 17.3%.
- TAB 4: The number of events where care began in the first trimester in Henry County is 171.0, lower than the Missouri Rural Norm of 249.2. The number of events where the mother smoked during pregnancy in Henry County is 64.0, lower than the Missouri Rural Norm of 73.6. The number of preterm births (less than 37 weeks gestation) in Henry County is 135.0, lower than the Missouri Rural Norm of 192.6. The number of teen births in Henry County is 55.0, higher the Missouri Rural Norm of 38.0. The number of out-of-wedlock births in Henry County is 580.0, lower than the Missouri Rural Norm of 627.0. The number of infants participating in WIC in Henry County is 208.0, lower than the Missouri Rural Norm of 211.4.
- TAB 5: The ratio of the population in Henry County to primary care physicians is 1,470:1, lower than the Missouri Rural Norm of 2,241:1. The ratio of the population in Henry County to dentists is 2,200:1, lower than the Missouri Rural Norm of 3,528:1. The number of preventable hospital stays in Henry County is 71.0, higher than the Missouri Rural Norm of 68.0. The percent of patients in Henry County who gave their hospital a rating of 9 or 10 on scale from 0 (lowest) to 10 (highest) is 70.0%, higher than the Missouri Rural Norm of 68.5%. The average time patients in Henry County spent in the Emergency Department before they were seen by a healthcare professional is 19.0 minutes, higher than the Missouri Rural Norm of 16.5 minutes.
- TAB 6: The percent of children in single-parent households in Henry County is 32.0%, higher than the Missouri Rural Norm of 29.7%. The ratio of the population in Henry County to mental health providers is 450:1, lower than the Missouri Rural Norm of 1,978:1. The violent crime rate per 100,000 in Henry County is 383.0, higher than the

Missouri Rural Norm of 241.8. The percent of alcohol-impaired driving deaths in Henry County is 17.0%, lower than the Missouri Rural Norm of 33.9%. The rate of drug overdose deaths per 100,000 in Henry County is 15.0, lower than the Missouri Rural Norm of 17.1.

- TAB 7: The rate of sexually transmitted infections per 100,000 in Henry County is 248.3, lower than the Missouri Rural Norm of 308.8. The mean travel time to work for workers age 16+ in Henry County is 21.9 minutes, lower than the Missouri Rural Norm of 23.0 minutes. The percent of residents in Henry County with a long commute driving alone is 29.0%, lower than the Missouri Rural Norm of 31.8%. The percent of Medicare beneficiaries in Henry County with Heart Failure is 16.2%, higher than the Missouri Rural Norm of 14.7%. The percent of Medicare beneficiaries in Henry County with high cholesterol is 32.4%, lower than the Missouri Rural Norm of 40.2%. The percent of Medicare beneficiaries in Henry County with Hypertension is 50.3%, lower than the Missouri Rural Norm of 53.9%. The percent of Medicare beneficiaries in Henry County with Osteoporosis is 3.0%, lower than the Missouri Rural Norm of 5.1%.
- TAB 8: The percent of uninsured adults in Henry County is 17.0%, lower than the Missouri Rural Norm of 20.3%.
- TAB 9: The life expectancy for males in Henry County is 72.6, lower than the Missouri Rural Norm of 74.4. The premature death years of potential life lost rate in Henry County is 8,700.0, higher than the Missouri Rural Norm of 7,718.8. The number of Chronic Lower Respiratory Disease mortalities in Henry County is 19.0, lower than the Missouri Rural Norm of 25.3. The number of motor vehicle crash deaths per 100,000 in Henry County is 16.0, lower than the Missouri Rural Norm of 20.9. The number of injury deaths per 100,000 in Henry County is 94.0, higher than the Missouri Rural Norm of 74.8. The number of injury at work deaths in Henry County is 5.0, lower than the Missouri Rural Norm of 7.3.
- TAB 10: The percent of access to exercise opportunities in Henry County is 51.0%, higher than the Missouri Rural Norm of 48.6%. The percent of residents in Henry County who ate fruits and vegetables less than five times per day is 85.5%, lower than the Missouri Rural Norm of 88.5%. The percent of Diabetic monitoring in Henry County is 88.0%, higher than the Missouri Rural Norm of 84.3%. The percent of mammography screenings in Henry County is 54.0%, lower than the Missouri Rural Norm of 58.8%. The percent of women age 18 and older in Henry County with no pap test in the last three years is 43.3%, higher than the Missouri Rural Norm of 33.5%. The percent of men and women age 50 and older in Henry County who had no sigmoidoscopy or colonoscopy in the last 10 years is 43.6%, higher than the Missouri Rural Norm of 40.9%.

Key 2016 Community Feedback Conclusions

In October 2016, VVV Consultants LLC collected stakeholder feedback from community consumers, leaders, groups, public and other organizations and providers. These PSA community stakeholders (N=205) provided the following feedback via an online perception survey:

- 71.2% of Henry County stakeholders would rate the overall quality of healthcare delivery in their community as either Very Good or Good, with Very Good being the highest ranking.
- Henry County stakeholders believe these needs are being met: Ambulance, Eye Doctor / Optometrist, Home Health, Hospice, Medical Inpatient Services, Medical Outpatient Services, Pharmacy, Primary Care and Specialists.
- Henry County stakeholders believe these needs are not being met: Behavioral Health Inpatient Services, Behavioral Health Outpatient Services, Child Care, Chiropractors, Dentists, Emergency Room, Family Planning Services, Mental Health Services, Nursing Home and School Nurse.
- 77.0% of Henry County stakeholders have received healthcare services outside of their community over the past two years.
- Henry County stakeholders perceive the following causes of disease or disability a problem in their community: Abuse / Violence, Drugs / Substance Abuse, Mental Illness, Obesity, Poverty and Teen Pregnancy.

As seen below, the community still senses a health need for Drug Abuse, Reduce Obesity (Fitness / Nutrition), Reduce Smoking, Lessen Emergency Room Wait Times, Encourage Parental Guidance and Increase Mental Health Delivery (Access / Placement).

Golden Valley Memorial Hospital (Primary Service Area) - Clinton, MO N=349						
3. From our last CHNA (2014), a number of health needs were identified as priorities. Are any of these 2014 CHNA needs still an "Ongoing Problem" in the Golden Valley Memorial Hospital Primary Service Area?						
Answer Options	Not a Problem Anymore	Somewhat of a Problem	Major Problem	Problem %	Response Count	Most Pressing Rank
Drug Abuse	7	35	160	96.5%	202	1
Reduce Obesity (Fitness / Nutrition)	9	78	114	95.5%	201	2
Reduce Smoking	14	92	94	93.0%	200	5
Lessen Emergency Room Wait Times	22	94	79	88.7%	195	4
Encourage Parental Guidance	26	98	76	87.0%	200	6
Increase Mental Health Delivery (Access / Placement)	27	97	75	86.4%	199	3
Provide Local Oral Surgeon Services	33	94	67	83.0%	194	11
Expand Community Wellness Education	40	116	42	79.8%	198	9
Increase Number of Dentists Accepting Medicaid	41	94	56	78.5%	191	8
Improve Quality of Nursing Home Care Services	49	88	57	74.7%	194	7
Expand Pediatric Care Services	74	84	36	61.9%	194	12
Increase Visiting Specialists (Pediatrics / Oncology / Psychiatry / Dermatology / Orthopedics / Urology)	80	83	33	59.2%	196	10

II. Methodology

[VVV Consultants LLC]

II. Methodology

a) CHNA Scope and Purpose

The new federal Patient Protection and Affordable Care Act requires that each registered 501(c)3 hospital conduct a Community Health Needs Assessment (CHNA) at least once every three years and adopt a strategy to meet community health needs. Any hospital who has filed a 990 is required to conduct a CHNA. IRS Notice 2011-52 was released in late fall of 2011 to give notice and request comments.

JOB #1: Meet/Report IRS 990 Required Documentation

1. A description of the community served by the facility and how the community was determined;
2. A description of the process and methods used to conduct the CHNA;
3. The identity of any and all organizations with which the organization collaborated and third parties that it engaged to assist with the CHNA;
4. A description of how the organization considered the input of persons representing the community (*e.g., through meetings, focus groups, interviews, etc.*), who those persons are, and their qualifications;
5. A prioritized description of all of the community needs identified by the CHNA and an explanation of the process and criteria used in prioritizing such needs; and
6. A description of the existing health care facilities and other resources within the community available to meet the needs identified through the CHNA.

Section 501(r) provides that a CHNA must take into account input from persons who represent the broad interests of the community served by the hospital facility, including individuals with special knowledge of or expertise in public health. Under the Notice, the persons consulted must also include: Government agencies with current information relevant to the health needs of the community and representatives or members in the community that are medically underserved, low-income, minority populations, and populations with chronic disease needs. In addition, a hospital organization may seek input from other individuals and organizations located in or serving the hospital facility's defined community (*e.g., health care consumer advocates, academic experts, private businesses, health insurance and managed care organizations, etc.*).

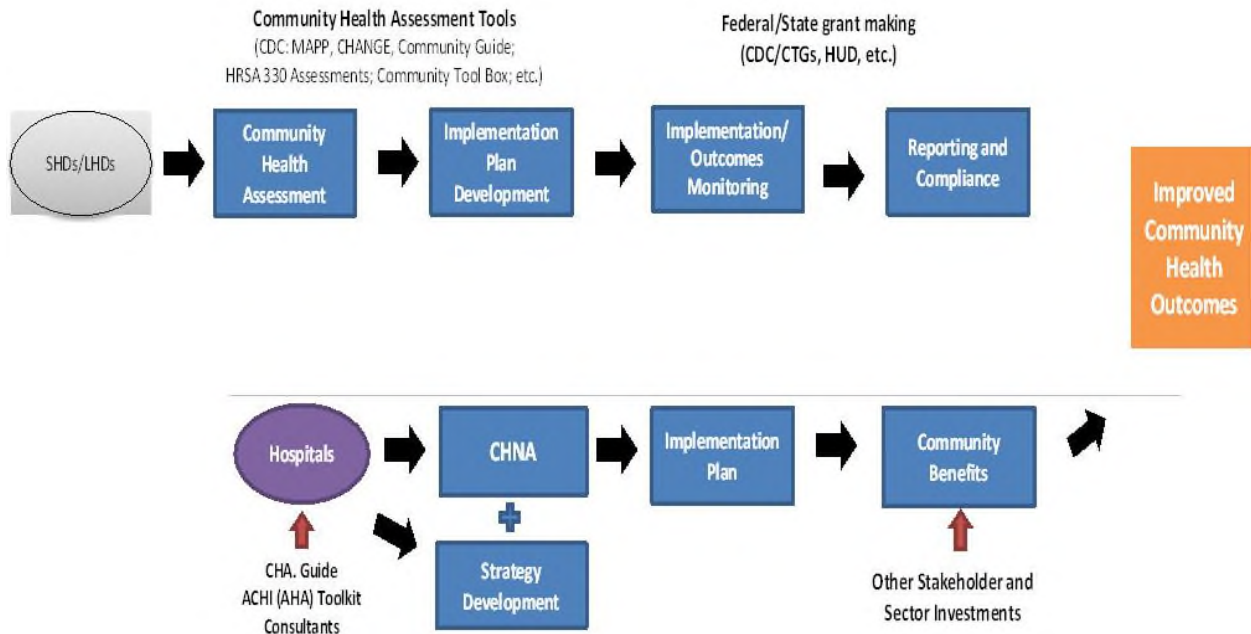
JOB #2: Making a CHNA Widely Available to the Public

The Notice provides that a CHNA will be considered to be "conducted" in the taxable year that the written report of the CHNA findings is made widely available to the public. The Notice also indicates that the IRS intends to pattern its rules for **making a CHNA "widely available to the public"** after the rules currently in effect for Form 990. Accordingly, an organization would make a **facility's written report** widely available by posting the final report on its website either in the form of (1) the report itself, in a readily accessible format or (2) a link to another organization's website, along with instructions for accessing the report on that website. *The Notice clarifies that an organization must post the CHNA for each facility until the date on which its subsequent CHNA for that facility is posted.*

JOB #3: Adopt an Implementation Strategy by Hospital

Section 501(r) requires a hospital organization to adopt an implementation strategy to meet the needs identified through each CHNA. The Notice defines an “implementation strategy” as a written plan that addresses each of the needs identified in a CHNA by either (1) describing how the facility plans to meet the health need or (2) identifying the health need as one that the facility does not intend to meet and explaining why the facility does not intend to meet it. A hospital organization may develop an implementation strategy in collaboration with other organizations, which must be identified in the implementation strategy. As with the CHNA, a hospital organization that operates multiple hospital facilities must have a separate written implementation strategy for each of its facilities.

Great emphasis has been given to work hand-in-hand with leaders from hospitals, the state health department and the local health department. A common approach has been adopted to create the CHNA, leading to aligned implementation plans and community reporting.



IRS Notice 2011-52 Overview

Notice and Request for Comments Regarding the Community Health Needs Assessment Requirements for Tax-exempt Hospitals:

Applicability of CHNA Requirements to “Hospital Organizations”

The CHNA requirements apply to “hospital organizations,” which are defined in Section 501(r) to include (1) organizations that operate one or more state-licensed hospital facilities, and (2) any other organization that the Treasury Secretary determines is providing hospital care as its principal function or basis for exemption.

How and When to Conduct a CHNA

Under Section 501(r), a hospital organization is required to conduct a CHNA for each of its hospital facilities once every three taxable years. ***The CHNA must take into account input from persons representing the community served by the hospital facility and must be made widely available to the public. The CHNA requirements are effective for taxable years beginning after March 23, 2012.*** As a result, a hospital organization with a June 30 fiscal year end must conduct an initial CHNA for each of its hospital facilities by June 30, 2013, either during the fiscal year ending June 30, 2015 or during either of the two previous fiscal years.

Determining the Community Served

A CHNA must identify and assess the health needs of the **community served** by the hospital facility. Although the Notice suggests that geographic location should be the primary basis for defining the community served, it provides that the organization may also take into account the target populations served by the facility (e.g., children, women, or the aged) and/or the facility’s principal functions (e.g., specialty area or targeted disease). *A hospital organization, however, will not be permitted to define the community served in a way that would effectively circumvent the CHNA requirements (e.g., by excluding medically underserved populations, low-income persons, minority groups, or those with chronic disease needs).*

Persons Representing the Community Served

Section 501(r) provides that a CHNA must take into account input from **persons who represent the broad interests of the community** served by the hospital facility, including individuals with special knowledge of or expertise in public health. Under the Notice, the persons consulted must also include: (1) government agencies with current information relevant to the health needs of the community and (2) representatives or members of medically underserved, low-income, and minority populations, and populations with chronic disease needs, in the community. In addition, a hospital organization may seek input from other individuals and organizations located in or serving the hospital facility’s defined community (e.g., health care consumer advocates, academic experts, private businesses, health insurance and managed care organizations, etc.).

Required Documentation

The Notice provides that a hospital organization will be required to separately document the CHNA for each of its hospital facilities in a **written report** that includes the following information: 1) a description of the community served by the facility and how the community was determined; 2) a description of the process and methods used to conduct the CHNA; 3) the identity of any and all organizations with which the organization collaborated and third parties that it engaged to assist with the CHNA; 4) a description of how the organization considered the input of persons representing the community (e.g., through meetings, focus groups, interviews, etc.), who those persons are, and their qualifications; 5) a prioritized description of all of the community needs identified by the CHNA and an explanation of the process and criteria used in prioritizing such needs; and 6) a description of the existing health care facilities and other resources within the community available to meet the needs identified through the CHNA.

Making a CHNA Widely Available to the Public

The Notice provides that a CHNA will be considered to be **“conducted”** in the taxable year that the written report of the CHNA findings is made widely available to the public. The Notice also indicates that the IRS intends to pattern its rules for making a CHNA “widely available to the public” after the rules currently in effect for Forms 990. *Accordingly, an organization would make a facility’s written report widely available by posting on its website either (1) the report itself, in a readily accessible format, or (2) a link to another organization’s website, along with instructions for accessing the report on that website. The Notice clarifies that an organization must post the CHNA for each facility until the date on which its subsequent CHNA for that facility is posted.*

How and When to Adopt an Implementation Strategy

Section 501(r) requires a hospital organization to adopt an implementation strategy to meet the needs identified through each CHNA. **The Notice defines an “implementation strategy” as a written plan that addresses each of the needs identified in a CHNA by either (1) describing how the facility plans to meet the health need, or (2) identifying the health need as one that the facility does not intend to meet and explaining why the facility does not intend to meet it.** A hospital organization may develop an implementation strategy in collaboration with other organizations, which must be identified in the implementation strategy. As with the CHNA, a hospital organization that operates multiple hospital facilities must have a separate written implementation strategy for each of its facilities.

Under the Notice, an implementation strategy is considered to be “adopted” on the date the strategy is approved by the organization’s board of directors or by a committee of the board or other parties legally authorized by the board to act on its behalf. Further, the formal adoption of the implementation strategy must occur by the end of the same taxable year in which the written report of the CHNA findings was made available to the public. For hospital organizations with a June 30 fiscal year end, that effectively means that the organization must complete and appropriately post its first CHNA no later than its fiscal year ending June 30, 2013, and formally adopt a related implementation strategy by the end of the same tax year. *This final requirement may come as a surprise to many charitable hospitals, considering Section 501(r) contains no deadline for the adoption of the implementation strategy.*

Year 2015 - IRS and Treasury Finalize Patient Protection Rules for Tax-Exempt Hospitals

ACCOUNTING TODAY 1/2/15

The Internal Revenue Service and the Treasury Department have issued **final regulations** under the Affordable Care Act to protect patients in tax-exempt hospitals from aggressive debt collection practices and to provide other rules for charitable hospitals.

Under the **final regulations**, each Section 501(c)(3) hospital organization is required to meet four general requirements on a facility-by-facility basis: establish written financial assistance and emergency medical care policies; limit the amounts charged for emergency or other medically necessary care to individuals eligible for assistance under the hospital's financial assistance policy; make reasonable efforts to determine whether an individual is eligible for assistance under the hospital's financial assistance policy before engaging in extraordinary collection actions against the individual; and conduct a community health needs assessment, or CHNA, and adopt an implementation strategy at least once every three years. The first three requirements are effective for tax years beginning after March 23, 2010 and the CHNA requirements are effective for tax years beginning after March 23, 2012.

The ACA also added a new Section 4959, which imposes an excise tax for failure to meet the CHNA requirements, and added reporting requirements. These final regulations provide guidance on the entities that must meet these requirements, the reporting obligations relating to these requirements and the consequences for failing to satisfy the requirements.

"Charitable hospitals represent more than half of the nation's hospitals and play a key role in improving the health of the communities they serve," wrote Emily McMahon, Deputy Assistant Secretary for Tax Policy at the U.S. Department of the Treasury, in a **blog post** Monday explaining the requirements. "But reports that some charitable hospitals have used aggressive debt collection practices, including allowing debt collectors to pursue collections in emergency rooms, have highlighted the need for clear rules to protect patients. For hospitals to be tax-exempt, they should be held to a higher standard. That is why the Affordable Care Act included additional consumer protection requirements for charitable hospitals, so that patients are protected from abusive collections practices and have access to information about financial assistance at all tax-exempt hospitals."

She noted that as a condition of their tax-exempt status, charitable hospitals must take an active role in improving the health of the communities they serve, establish billing and collections protections for patients eligible for financial assistance, and provide patients with the information they need to apply for such assistance. "These final rules adopt the same framework of proposed regulations but simplify the compliance process for charitable hospitals, while continuing to provide meaningful guidance on protections for patients and requirements to assess community health needs," she added.

Under the new rules, hospitals cannot charge individuals eligible for financial assistance more for emergency or other medically necessary care than the amounts generally billed to patients with insurance (including Medicare, Medicaid, or private commercial insurance). In addition, every tax-exempt hospital must establish and widely publicize a financial assistance policy that clearly describes to patients the eligibility criteria for obtaining financial assistance and the method for applying for financial assistance.

Charitable hospitals are also prohibited from engaging in certain collection methods (for example, reporting a debt to a credit agency or garnishing wages) until they make reasonable efforts to determine whether an individual is eligible for assistance under the hospital's financial assistance policy.

In addition, each charitable hospital needs to conduct and publish a community health needs assessment at least once every three years and disclose on the tax form that it files on an annual basis the steps it is taking to address the health needs identified in the assessment.

Many of the requirements have been in place since the Affordable Care Act passed in 2010, but in response to comments on the proposed regulations, the final rules also expand access to translations for patients, by lowering the threshold for having translations of financial assistance policies available from 10 percent of the community served as proposed, to five percent of the community served or population expected to be encountered by the hospital facility, or 1000 persons, whichever is less, according to McMahon. "The final rules also revise the notification requirements to maintain important protections for patients while making it easier for hospitals to comply with them," she wrote. "General notifications regarding a hospital's financial assistance policy must appear on bills and in the hospital. However, individual written and oral notifications of the hospital's financial assistance policy are now only required when a hospital plans to use extraordinary collections actions, such as reporting a debt to a credit bureau, selling the debt to a third party or garnishing wages."

While charitable hospitals must continue to make a good-faith effort to comply, the rules provide charitable hospitals with time to fully update their policies and programming to implement the changes. But if a charitable hospital fails to meet the consumer protection provisions required by the law, the hospital could have its tax-exempt status revoked. If a hospital fails to properly conduct a community health needs assessment or adopt an implementation strategy, an excise tax will apply, McMahon noted. "However, if a hospital fails to meet a requirement, but the failure is neither willful nor egregious, the hospital can correct and publicly disclose the error to have it excused, thus avoiding revocation of tax-exempt status, but the excise tax would still apply," she wrote.

II. Methodology

b) Local Collaborating CHNA Parties

Working together to improve community health takes collaboration. Listed below are in-depth profiles for the local hospital, health department, and FQHC and behavioral health center CHNA partners. This CHNA has been prepared on behalf of Golden Valley Memorial Healthcare (GVMH), Henry County Health Center (HCHC) and Compass Health Network (CHN). The Primary Service Area (PSA) named for this CHNA includes both Henry and Benton Counties in Missouri.

Golden Valley Memorial Healthcare Profile

1600 N. 2nd St., Clinton, MO 64735

CEO: Randy Wertz

COO: Craig Thompson

About Us: GVMH is a not-for-profit, modern healthcare organization consisting of an 56-bed hospital, a home health service, and physician and outpatient clinics located in west central Missouri. Multi-specialty physician clinics located in Clinton, Windsor, Warsaw and Osceola offer 30 providers, 11 specialties, walk-in clinics with extended hours, laboratory, radiology, diagnostic ultrasound and mammography services.

Located near Truman Lake, Golden Valley Memorial Healthcare provides rural residents with big city services, while living up to the community slogan, "Great People, by Nature." GVMH boasts Home Health services ranked among the best in the nation, specialty clinics, state-of-the-art medical equipment, and nationally recognized food "room service." Top rated technology and an exceptional staff allows for excellent inpatient, outpatient, emergency and rehabilitation services. With four physician clinics and dedicated support personnel, GVMH provides a great place for patients to receive care, staff to work, and physicians to practice.

Mission, Vision, and Values: Over the past several months the management team, medical staff and board of directors have been involved in a joint planning effort to update the hospital strategic plan. An important component of this strategic planning process was a review of our mission, vision and values. This review/validation process did result in some wording changes. The following is our updated mission, vision and values statements:

Mission: To provide exceptional health and wellness services with friendliness and compassion.

Vision: To make a positive difference in the health and wellness of each life we touch.

Values:

- **QUALITY** - Golden Valley Memorial Healthcare (GVMH) is committed to providing exceptional care and services.
- **PROFESSIONALISM** - GVMH is a learning organization that maintains a competent, qualified and progressive staff.
- **ACCOUNTABILITY** - GVMH is committed to its responsibility to the community and the cost-effective utilization of resources and financial soundness.
- **COMPASSION** - GVMH is a caring organization, valuing human dignity and quality of life.
- **EXCELLENCE** - GVMH is committed to providing an exceptional healthcare experience.

Please note that key operating priorities embodied in our updated mission, vision and values include:

- Our organizational commitment to the provision of exceptional care and services.
- Our commitment to providing care and service with friendliness and compassion.
- Our commitment to maintain a competent, qualified and progressive staff.
- The importance of fiscal responsibility and efforts to cost-effectively utilize resources and to maintain financial soundness.

Our updated mission, vision and values statements continue to provide a framework of operating priorities that help to guide and shape the behavior of everyone at GVMH on a day-to-day basis. We have much to be proud of at GVMH. Together, we truly do provide exceptional health and wellness services with friendliness and compassion.

Services Directory:

- Birthing Center
- Cardiac and Pulmonary Services
- Cardiology
- Dermatology
- Diabetes Education
- Diagnostic Imaging
- Emergency Services
- Endoscopy
- Food & Nutrition Services
- General Surgery
- Home Services
- Intensive Care Unit
- Laboratory
- Medical Care Unit
- Nephrology
- Oncology
- Oncology Clinic
- Orthopedic Surgery
- Patient & Staff Education
- Pediatrics
- Pulmonology
- Rehabilitation & Wellness
- Rheumatology
- Respiratory Therapy & EKG
- Sleep Lab
- Social Services
- Urology
- Vascular Access
- Women's Health
- Wound & Ostomy Clinic

Henry County Health Center Profile

1800 Community Dr, Clinton, MO 64735

Administrator: Peggy Bowles

What is public health?

Public Health is a sophisticated science for identifying and dealing with real or potential health threats to the community. Public Health's primary focus is to improve the health of communities, to prevent disease from occurring, and to save lives. HCHC does this through:

- Assessing and promoting health and safety through training and self-assessment
- Prevents or minimizes the occurrence of diseases and injuries through immunizations, community education, and nursing services
- Plans, prepares and responds to natural or man-made disasters
- Enforces public health laws and regulations

Compass Health Network: Co-locating service organizations in the same building makes it easier to work together to improve the overall health of individuals and families in Henry County. Pathways Community Health and Compass Health Wellness, are members of the Compass Health Network. The program and services of Pathways Community Health (Behavioral), Henry County Health Center (Nursing, Vital Records, WIC, etc.) and Compass Health Wellness (Family Medicine/Primary Care, Dental) complement each other and will integrate well for everyone.

Services:

- WIC
 - Breastfeeding
 - Windsor Clinic
 - Lead Testing
- Family Medicine / Nursing
 - Flu Shots
 - Immunizations
 - STI Testing
 - Pregnancy Testing
 - Rural Health Nursing
- Special Needs
- Community Programs
 - Car Seat Program
 - Safe Cribs Program
 - Daycare Provider Education
 - CPR / First Aid
 - Vital Records
 - Emergency Preparedness
 - Distracted Driving
- Food / Septic
 - Food Handler Cards
 - Food Permits

Compass Health Network Profile

1800 Community Dr, Clinton, MO 64735
President / CEO: Tim Swinfard

About Compass Health Network: Compass Health Network includes Pathways Community Health, Crider Health Center and Royal Oaks Hospital. Together, these nonprofit organizations provide a full continuum of health care services including primary, behavioral and dental throughout Missouri and Louisiana with a focus on treating the whole person.

Our Mission: Inspire Hope. Promote Wellness.

Our Vision: Full, Productive, Healthy Lives for Everyone

Pathways Community Health: Pathways Community Health, part of the Compass Health network, provides family medicine, dental, mental health and alcohol and drug treatment for individuals of all ages. We partner with other community organizations to identify gaps in services. In some communities that means we assist with housing, emergency room diversion services, veterans' services, suicide prevention as well as other supportive services.

Pathways' offices are located across Missouri and Louisiana. If you have a question, we are just a phone call away. We accept a number of forms of payment for services including many types of private insurance, Medicaid, Medicare and for some programs, sliding fee scales and payment arrangements are available.

Pathways has been helping individuals since the organization was established in 1974. We employ a number of professionals including psychiatrists, psychologists, licensed therapists, nurses, social workers, and certified addiction counselors. The Compass Health network formed in 2014 and includes Pathways Community Health, Crider Health Center and Royal Oaks Hospital.

We are focused on being a Center of Excellence in regard to the individuals we serve, the staff we employ, and our community partnerships. Our mission is to Promote Hope. Inspire Wellness.

Crider Health Center: Crider Health Center, part of the Compass Health network, is committed to caring for its customers and their overall well-being as well as that of their families. Crider Health Center believes in a wrap-around philosophy.

In order to accomplish this approach, Crider Health Center forms partnerships in the community with other local agencies and governmental entities to not only take care of physical and behavioral health needs, but to also ensure that people have adequate and healthy nourishment, housing, and the skills that they need to achieve their fullest potential. By treating the whole person rather than just the symptoms of their illness, individuals are empowered to live full, productive, healthy lives.

Since 1979, Crider Health Center has been serving the behavioral health needs of Franklin, Lincoln, Warren, and St. Charles Counties. This is accomplished through a number of services including counseling, psychiatry, community support, crisis services and prevention services. The organization was initially developed to serve the increasing need for community behavioral health services in the four-county area.

In 2006, the Board of Directors voted to expand its services to include Primary Health Care and Dental Services. Crider Health Center merged with Pathways Community Health and Royal Oaks Hospital in October 2014 to form Compass Health. Together, these nonprofit organizations provide a full continuum of health care services including primary, behavioral and dental throughout Missouri and Louisiana with a focus on treating the whole person.

Royal Oaks Hospital: Royal Oaks Hospital, part of the Compass Health network, is a leader in the field of behavioral health care. Our experts are committed to providing the highest quality of care to our patients. Royal Oaks Hospital believes in the health and wellbeing of our patients, and it shows in the kind of care they receive.

There are dedicated, caring staff waiting to assist you at Royal Oaks Hospital. We have a long history helping men, women, children and families through the recovery process and on their way to a more fulfilling life. In October 2014, Royal Oaks Hospital, Pathways Community Health and Crider Health Center merged to form Compass Health. Together, these nonprofit organizations provide a full continuum of health care services including primary, behavioral and dental throughout Missouri and Louisiana with a focus on treating the whole person.

Services: Compass Health takes a “person centered, integrated approach” to your care that focuses on treating the whole person. It is a collaboration between individual patients, their personal providers, and when appropriate, their family. It is a true team approach that assists the person/family with learning techniques to help them manage their own illnesses and also focuses on ways to prevent the onset of illnesses. Efficient and effective care is enhanced by data and technology to assure that patients receive the care they need when and where they need it. Care is delivered in a culturally and linguistically appropriate manner.

- Community Based Behavioral Health Services and Support
- Crisis Services
- Dental
- Developmental Disabilities Support
- Family Medicine / Primary Care
- Outpatient Behavioral Health
- Pharmacy
- Residential Treatment
- Substance Use Disorders / Alcohol and Drug Treatment

Consultant Qualifications



VVV Consultants LLC

Company Profile: 601 N. Mahaffie, Olathe, KS 66061 (913) 302-7264

VINCE VANDEHAAR, MBA

Principal Consultant and Owner of VVV Consultants LLC

VVV Consultants LLC was incorporated on May 28, 2009. With over 30 years of business and faculty experience in helping providers, payors and financial service firms obtain their strategic planning and research and development needs, Vince brings in-depth health industry knowledge, research aptitude, planning expertise and energy. VVV Consultants LLC services are organized, formal processes of listening to the voice of the customer. Vince started his consulting business after working for Saint Luke's Health System (SLHS) of Kansas City for 16 years. *(Note: Saint Luke's Hospital of Kansas City, SLHS's largest hospital, won the Malcolm Baldrige National Quality Award in March of 2003. The Baldrige examiners cited Vince's department as "Best Practice" in the areas of customer satisfaction, market research and evaluation efforts <Kansas City Star 3/10/04>).*

VVV Consultants LLC consultants have in-depth experience helping hospitals work with local health departments to engage community residents and leaders to identify gaps between existing health community resources and needs and construct detailed strategies to meet those needs, while still adhering to the hospital's mission and budget. Over the past 20 years, Vandehaar has completed eight comprehensive Baldrige aligned Community Health Needs Assessments for Saint Luke's of Kansas City System facilities (three campuses) and was contracted to conduct two additional independent department of health consulting projects (prior to IRS 990 regs). To date, VVV has completed 76 CHNA IRS-aligned assessments for Iowa, Kansas, Missouri and Nebraska hospitals, health departments and healthcare organizations.

Vince Vandehaar, MBA is actively involved in the Kansas City community. He is a member the Greater Kansas City Employee Benefits Association, the Society for Healthcare Strategy and Market Development, the American Marketing Association Kansas City Chapter and Co-Chair of the AMA Kansas City Healthcare Special Interest Group. In addition to these roles, from 2000 to 2008, Vince served as the state chairman for MHA's Data Committee and was a member of KHA's Data Taskforce.

Collaborating Consultants

Alexa Backman, MBA - VVV Consultants LLC

Associate Consultant

Alexa provides project management support for all aspects of VVV Consultants LLC's healthcare consulting services, from project start to finish. She is client focused with a special interest in quality patient healthcare delivery to meet customer needs. Alexa graduated from the University of Kansas with a Bachelor's Degree in Community Health Education in 2013. In 2015, Alexa graduated from Rockhurst University's Helzberg School of Management with an MBA in Healthcare Management.

II. Methodology

c) CHNA and Town Hall Research Process

Golden Valley Memorial Healthcare's Primary Service Area Community Health Needs Assessment (CHNA) process began in June 2016. At that time, an inquiry was made by Craig Thompson, GVMH COO to VVV Consultants LLC to explore the possibility of conducting a comprehensive IRS-aligned CHNA. VVV Consultants LLC then reviewed the CHNA experience, in-depth CHNA requirements and regulations, CHNA development options to meet IRS requirements and next steps after option approval.

VVV CHNA Deliverables:

- Confirm the GVMH Primary Service Area meets the 80-20 Patient Origin Rule.
- Uncover / document basic secondary research and health of the county, organized by 10 tabs.
- Conduct a Town Hall meeting to discuss secondary data and uncover / prioritize county health needs.
- Conduct and report CHNA primary research (with valid N).
- Prepare and publish an IRS-aligned CHNA report that meets the requirements.

To ensure proper GVMH Primary Service Area Town Hall representation that meets the 80-20 Patient Origin Rule, a patient origin three-year summary was generated and documented the zip codes below as the GVMH Primary Service Area.

Golden Valley Memorial Hospital - PSA Detail Demographic Profile									
Zip	Name	County	Population			Households		HH Avg. Size	Per Capita Income 14
			YR 2014	YR 2019	Chg.	YR 2014	YR 2019		
64726	Blairstown	HENRY	494	497	0.6%	193	194	2.6	\$21,898
64735	Clinton	HENRY	13,338	13,467	1.0%	5,749	5,814	2.3	\$22,156
64739	Creighton	HENRY	4,479	4,381	-2.2%	1,737	1,694	2.6	\$19,026
64740	Deepwater	HENRY	1,020	1,016	-0.4%	409	408	2.5	\$22,744
64770	Montrose	HENRY	1,910	1,903	-0.4%	847	844	2.3	\$20,822
64788	Urich	HENRY	870	856	-1.6%	395	389	2.2	\$19,496
65323	Calhoun	HENRY	1,145	1,117	-2.4%	482	471	2.4	\$20,938
65360	Windsor	HENRY	1,071	1,060	-1.0%	420	415	2.6	\$21,873
Totals			24,327	24,297	-6.5%	10,232	10,229	2.4	\$21,119

Golden Valley Memorial Hospital - PSA Detail Demographic Profile									
Zip	Name	County	Population			Households		HH Avg. Size	Per Capita Income 14
			YR 2014	YR 2019	Chg.	YR 2014	YR 2019		
65325	Cole Camp	BENTON	3,168	3,153	-0.5%	1,307	1,303	2.4	\$20,847
65326	Edwards	BENTON	2,038	2,021	-0.8%	1,008	1,003	2.0	\$22,531
65335	Ionia	BENTON	325	326	0.3%	138	139	2.4	\$19,152
65338	Lincoln	BENTON	3,104	3,117	0.4%	1,314	1,322	2.3	\$17,446
65355	Warsaw	BENTON	10,821	10,903	0.8%	4,987	5,043	2.1	\$19,726
Totals			19,456	19,520	0.2%	8,754	8,810	2.2	\$19,940

Golden Valley Memorial Hospital, Henry County Health Center and Compass Health Network

CHNA Work Plan - Project Timeline and Roles 2017

Step	Date (Start-Finish)	Lead	Task
1	7/1/2016	VVV	Sent VVV quote for review.
2	7/15/2016	All	Select CHNA Option A / B / C. Approve and sign VVV CHNA quote.
3	8/15/2016	All	Send out REQCommInvite Excel file. Hospital, Health Department and Healthcare Organization to fill in PSA stakeholders' names, addresses and e-mails.
4	8/15/2016	VVV / Hosp	Request Hospital sends MHA PO101, PO103 and TOT223E Patient Origin Reports to document service area for FFY 13, 14 and 15. In addition, request Hospital completes three year historical PSA IP / OP / ER / Clinic Patient Origin file (Use ZipPSA_3yrPOrigin.xls).
5	On or before 9/5/2016	All	Prepare CHNA Round #2 stakeholder feedback online link. Send test link for Hospital, Health Department and Healthcare Organization to review.
6	On or before 9/19/2016	VVV / Hosp	Prepare and send out PR story to local media announcing upcoming CHNA work. Hospital to place.
7	On or before 9/19/2016	All	Launch and conduct online survey to stakeholders. Hospital, Health Department and Healthcare Organization will e-mail invite to participate to all stakeholders.
8	On or before 9/26/2016	All	Prepare and send out PR story to local media CHNA survey announcing online CHNA Round #2 feedback. Request public to participate.
9	On or before 10/3/2016	VVV	Assemble and complete secondary research. Find and populate 10 TABS. Create Town Hall PowerPoint for presentation.
10	10/10/2016	All	Prepare and send out community Town Hall invite letter and place local ad.
11	10/10/2016	All	Prepare and send out PR story to local media announcing upcoming Town Hall. VVV will mock up PR release to media sources.
12	On or before 10/28/2016	All	Conduct conference call (<i>time TBD</i>) with Hospital, Health Department and Healthcare Organization to review Town Hall data and flow.
13	Tuesday, 11/1/2016	All	Conduct CHNA Town Hall from 5:30-7:00p.m. at the Clinton Elks Lodge. Review and discuss basic health data plus rank health needs.
14	On or before 12/31/2016	All	Complete analysis. Release draft one and seek feedback from leaders at hospital and health department.
15	On or before 1/31/2017	All	Produce and release final CHNA report. Hospital, Health Department and Healthcare Organization will post CHNA online.
16	On or before 3/1/2017	All	Conduct Hospital Implementation Plan PSA leadership meeting.
17	30 days prior to end of hospital fiscal year	Hosp	Hold board meetings to discuss CHNA needs, create and adopt an Implementation Plan. Communicate CHNA plan to community.

To meet IRS CHNA requirements, a four-phase methodology was reviewed and approved as follows:

Phase I—Discovery:

Conduct a 30-minute conference call with the CHNA hospital, health department and healthcare organization clients. Review / confirm CHNA calendar of events, explain / coach clients to complete required participant database and schedule / organize all Phase II activities.

Phase II—Qualify Community Need:

A) Conduct secondary research to uncover the following historical community health status for the primary service area. Use Missouri Hospital Association (MHA), Vital Statistics, Robert Wood Johnson County Health Rankings, etc. to document current state of county health organized as follows:

TAB 1. Demographic Profile
TAB 2. Economic/Business Profile
TAB 3. Educational Profile
TAB 4. Maternal and Infant Health Profile
TAB 5. Hospitalization / Providers Profile
TAB 6. Behavioral Health Profile
TAB 7. Risk Indicators & Factors
TAB 8. Uninsured Profile
TAB 9. Mortality Profile
TAB 10. Preventative Quality Measures

B) Gather historical primary research to uncover public health needs, practices and perceptions for county health department and hospital primary service areas.

Phase III—Quantify Community Need:

Conduct a 90-minute Town Hall meeting with required county primary service area residents. At each Town Hall meeting, CHNA secondary data will be reviewed, facilitated group discussion will occur and a group ranking activity to determine the most important community health needs will be administered.

Phase IV—Complete Data Analysis and Create Comprehensive Community Health Needs Assessment:

Post CHNA report findings to meet IRS-aligned CHNA criteria.

After consideration of CHNA stakeholders (sponsoring county health department and hospital), the CHNA Option C was selected with the following project schedule:

Phase I: Discovery.....	August 2016
Phase II: Secondary / Primary Research.....	September 2016
Phase III: Town Hall Meeting.....	November 1, 2016
Phase IV: Prepare / Release CHNA report.....	December 2016

Detail CHNA Development Steps Include:

Steps to Conduct Community Health Needs Assessment	
	Development Steps
Step #1 Commitment	<i>Determine interest level of area healthcare leaders (Health Department, Hospital, Mental Health Centers, Schools, Churches and Physicians, etc.) and hold community meeting.</i>
Step #2 Planning	<i>Prepare brief Community Health Needs Assessment plan. List goals, objectives, purpose, outcome, roles, community involvement, etc. Hold community kick-off meeting.</i>
Step #3 Secondary Research	<i>Collect and report community health published facts. Gather health practice data from published secondary research sources (i.e. census, county health records, behavioral risk factors surveillance, etc.).</i>
Step #4a Primary Research	<i>Conduct Community Roundtable (qualitative research). Review secondary research (Step #3) with community stakeholders. Gather current opinions and identify health needs.</i>
Step #4b Primary Research <Optional>	<i>Collect community opinions (quantitative research). Gather current opinions (valid sample size) regarding community health needs and healthcare practices. If appropriate, conduct Physician Manpower Assessment to determine FTE physician need by specialty.</i>
Steps #5 Reporting	<i>Prepare / present comprehensive Community Health Needs Assessment report to community leaders with recommended actions to improve health. (Note: Formal report will follow PHAB regulations).</i>
<p>VVV Consultants LLC (913) 302-7264</p>	

Overview of Town Hall Community Priority Setting Process

Each community has a wealth of expertise to be tapped for CHNA development. For this reason, a Town Hall is the perfect forum to gather community insight and provide an atmosphere to objectively consensus build and prioritize county health issues.

All Town Hall priority-setting and scoring processes involve the input of key stakeholders in attendance. Individuals and organizations attending the Town Halls were critically important to the success of the CHNA. The following list outlines partners invited to the Town Hall: local hospital, public health community, mental health community, free clinics, community-based clinics, service providers, local residents, community leaders, opinion leaders, school leaders, business leaders, local government, faith-based organizations and persons (or organizations serving them), people with chronic conditions, uninsured community members, low income residents and minority groups.

The Golden Valley Memorial Healthcare Primary Service Area Town Hall was held on Tuesday, November 1, 2016 at the Clinton Elks Lodge. Vince Vandehaar and Alexa Backman facilitated this 1½ hour session with 35 attendees. (Note: a detailed roster of all Town Hall attendees is listed in Section V.)

The following Town Hall agenda was conducted:

1. Welcome and introductions.
2. Review purpose for the CHNA Town Hall and roles in the process.
3. Presentation / review of historical county health indicators (10 Tabs).
4. Facilitate Town Hall participant discussion of data by probing health strengths / concerns. Reflect on size and seriousness of any health concerns cited and discuss current community health strengths.
5. Engage Town Hall participants to rank health needs using four dots to cast votes on priority issues. Tally and rank top community health concerns cited.
6. Close meeting by reflecting on the health needs / community voting results. Inform participants on next steps.

At the end of the Town Hall session, VVV encouraged all community members to continue to contribute ideas to both hospital and health department leaders via e-mail or personal conversations.

(NOTE: To review detail Town Hall discussion content, please turn to Section V for detailed notes of session and activity card content reporting of open-end comments.)

II. Methodology

d) Community Profile

Henry County, Missouri Community Profile



Demographics

The population of Henry County was estimated to be 21,737 on July 1, 2015, and had a -2.4% change in population from April 1, 2010–July 1, 2015.¹ According to the United States Census Bureau, its county seat is Clinton. The county has a total area of 732 square miles, of which 697 square miles are land and 35 square miles are water.² Henry County's population density is 31 persons per square mile and its industries providing employment are Educational (health and social services) (30.4%), Agriculture (forestry, fishing and hunting, and mining) (26.8%) and Professional (scientific, management, administrative, and waste management services) (12.0%).³

The major highway transportation is by Route 7, Route 13, Route 18 and Route 52.⁴

¹ <http://www.census.gov/quickfacts/table/PST045215/29083>

² U.S. Census Bureau

³ http://www.city-data.com/county/Henry_County-MO.html

⁴ U.S. Census Bureau

Benton County, Missouri Community Profile



Demographics

The population of Benton County was estimated to be 18,670 on July 1, 2015, and had a -2.0% change in population from April 1, 2010–July 1, 2015.⁵ According to the United States Census Bureau, its county seat is Warsaw. The county has a total area of 753 square miles, of which 704 square miles are land and 48 square miles are water.⁶ Benton County's population density is 27 persons per square mile and its industries providing employment are Finance (insurance, real estate, and rental and leasing) (15.1%), Professional (scientific, management, administrative, and waste management services) (13.3%), Transportation (warehousing and utilities) (13.0%), Construction (12.2%) and Agriculture (forestry, fishing and hunting, and mining) (12.0%).⁷

The major highway transportation is by U.S. Route 65, Route 7, Route 83, Route 82 and Route 52.⁸

⁵ <http://www.census.gov/quickfacts/table/PST045215/29015>

⁶ U.S. Census Bureau

⁷ http://www.city-data.com/county/Benton_County-MO.html

⁸ U.S. Census Bureau

Golden Valley Memorial Hospital - PSA Detail Demographic Profile

Zip	Name	County	Population			Households		HH	Per Capita
			YR 2014	YR 2019	Chg.	YR 2014	YR 2019	Avg. Size	Income 14
64726	Blairstown	HENRY	494	497	0.6%	193	194	2.6	\$21,898
64735	Clinton	HENRY	13,338	13,467	1.0%	5,749	5,814	2.3	\$22,156
64739	Creighton	HENRY	4,479	4,381	-2.2%	1,737	1,694	2.6	\$19,026
64740	Deepwater	HENRY	1,020	1,016	-0.4%	409	408	2.5	\$22,744
64770	Montrose	HENRY	1,910	1,903	-0.4%	847	844	2.3	\$20,822
64788	Urich	HENRY	870	856	-1.6%	395	389	2.2	\$19,496
65323	Calhoun	HENRY	1,145	1,117	-2.4%	482	471	2.4	\$20,938
65360	Windsor	HENRY	1,071	1,060	-1.0%	420	415	2.6	\$21,873
Totals			24,327	24,297	-6.5%	10,232	10,229	2.4	\$21,119

Zip	Name	County	Population				YR 2014		Females
			YR 2014	Pop. 65+	Kids <18	Gen. Y	Males	Females	Age 20_35
64726	Blairstown	HENRY	494	88	116	137	245	249	34
64735	Clinton	HENRY	13,338	2,934	3,082	3,655	6,456	6,882	1,127
64739	Creighton	HENRY	4,479	169	236	292	520	500	77
64740	Deepwater	HENRY	1,020	509	343	432	973	937	116
64770	Montrose	HENRY	1,910	179	182	221	440	430	67
64788	Urich	HENRY	870	212	285	304	563	582	72
65323	Calhoun	HENRY	1,145	190	273	276	549	522	80
65360	Windsor	HENRY	1,071	817	1,200	1,312	2,188	2,291	413
Totals			24,327	5,098	5,717	6,629	11,934	12,393	1,986

Zip	Name	County	Population				Aver	HH	
			White	Black	Amer. Ind.	Hisp.	HH Inc. 14	YR 2014	HH \$50K+
64726	Blairstown	HENRY	475	0	0	15	\$56,049	193	95
64735	Clinton	HENRY	12,625	254	87	240	\$51,108	5,749	2,264
64739	Creighton	HENRY	994	5	5	17	\$48,811	1,737	186
64740	Deepwater	HENRY	1,844	8	18	34	\$56,720	409	316
64770	Montrose	HENRY	842	13	1	7	\$46,955	847	138
64788	Urich	HENRY	1,105	10	7	21	\$42,940	395	207
65323	Calhoun	HENRY	1,040	1	6	13	\$49,738	482	214
65360	Windsor	HENRY	4,281	11	51	107	\$55,775	420	663
Totals			23,206	302	175	454	\$51,012	10,232	4,083

Source: ERSA Demographics

Golden Valley Memorial Hospital - PSA Detail Demographic Profile

Zip	Name	County	Population			Households		HH	Per Capita
			YR 2014	YR 2019	Chg.	YR 2014	YR 2019	Avg. Size	Income 14
65325	Cole Camp	BENTON	3,168	3,153	-0.5%	1,307	1,303	2.4	\$20,847
65326	Edwards	BENTON	2,038	2,021	-0.8%	1,008	1,003	2.0	\$22,531
65335	Ionia	BENTON	325	326	0.3%	138	139	2.4	\$19,152
65338	Lincoln	BENTON	3,104	3,117	0.4%	1,314	1,322	2.3	\$17,446
65355	Warsaw	BENTON	10,821	10,903	0.8%	4,987	5,043	2.1	\$19,726
Totals			19,456	19,520	0.2%	8,754	8,810	2.2	\$19,940

Zip	Name	County	Population				YR 2014		Females
			YR 2014	Pop. 65+	Kids <18	Gen. Y	Males	Females	Age 20_35
65325	Cole Camp	BENTON	3,168	725	709	799	76	1,604	226
65326	Edwards	BENTON	2,038	673	277	332	25	997	89
65335	Ionia	BENTON	325	54	85	94	10	161	28
65338	Lincoln	BENTON	3,104	802	677	703	69	1,600	227
65355	Warsaw	BENTON	10,821	3,443	1,793	2,031	226	5,330	545
Totals			19,456	5,697	3,541	3,959	406	9,692	1,115

Zip	Name	County	Population				Aver	HH	
			White	Black	Amer. Ind.	Hisp.	HH Inc. 14	YR 2014	HH \$50K+
65325	Cole Camp	BENTON	3,090	0	21	47	\$50,142	1,307	501
65326	Edwards	BENTON	1,967	11	13	31	\$45,546	1,008	312
65335	Ionia	BENTON	311	1	0	19	\$45,059	138	48
65338	Lincoln	BENTON	3,003	8	23	59	\$40,829	1,314	382
65355	Warsaw	BENTON	10,407	74	81	216	\$42,568	4,987	1,564
Totals			18,778	94	138	372	\$44,829	8,754	2,807

Source: ERSA Demographics

III. Community Health Status

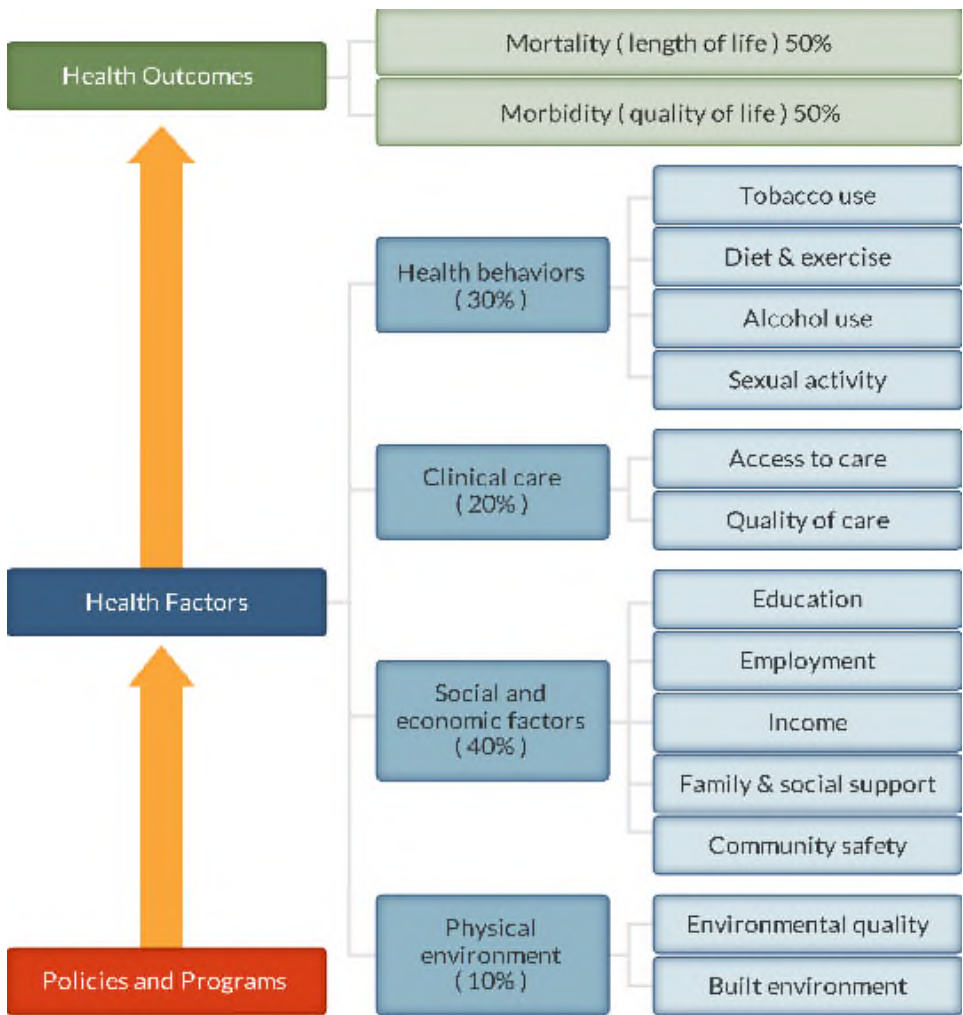
[VVV Consultants LLC]

III. Community Health Status

a) Historical Health Statistics (Secondary Research)

Health Status Profile

This section of the CHNA reviews published quantitative community health indicators and results of our recent CHNA Town Hall. To produce this profile, VVV Consultants LLC staff analyzed data from multiple sources. This analysis focuses on a set of published health indicators organized by 10 areas of focus (10 Tabs), results from the 2015 County Health Rankings and conversations from Town Hall primary research. **Each table reflects a trend column, with Green denoting growing / high performance indicators, Yellow denoting minimal change / average performance indicators and Red denoting declining / low performance indicators.** (Note: The Robert Wood Johnson Foundation collaborates with the University of Wisconsin Population Health Institute to release annual *County Health Rankings*. As seen below in model, these rankings are based on a number of health factors.)



County Health Rankings model ©2012 UWPHI

Secondary Research

2016 State Health Rankings for Henry County, Missouri

#	Missouri Rank of 115 Counties (including St. Louis City)	Definitions	Henry County	TREND	Benton County	MO RURAL NORM (16)
1	Health Outcomes	Length of Life, Quality of Life	71		87	46
1a	Length of Life	Premature Death	70		85	44
1b	Quality of Life	Poor / Fair Health, Poor Physical / Mental Health Days, Low Birthweight	62		82	55
2	Health Factors	Health Behaviors, Clinical Care, Social / Economic Factors, Physical Environment	50		77	44
2a	Health Behaviors	Tobacco Use, Diet / Exercise, Alcohol / Drug Use, Sexual Activitiy	47		25	54
2b	Clinical Care	Access to Care, Quality of Care	32		99	50
2c	Social and Economic Factors	Education, Employment, Income, Family / Social Support, Community Safety	63		89	44
2d	Physical Environment	Air / Water Quality, Housing / Transit	56		63	42
http://www.countyhealthrankings.org , released 2016						
Missouri Rural Norm (N=16) includes the following counties: Marion, Henry, Benton, Chariton, Cass, Audrain, Bates, Clinton, Howard, Johnson, Macon, Monroe, Pettis, Phelps, Randolph and Shelby Counties.						

When considering the state of community health, it's important to review published health data by topic area. Below is a summary of key tabs of information collected:

Tab 1a Demographic Profile

Tab	Health Indicator	Henry County	Trend	Benton County	State of MO	MO Rural Norm (16)	Source
1a	a Population estimates, July 1, 2015	21,737		18,670	6,083,672	27,995	People Quick Facts
1a	b Population, Census, April 1, 2010	22,272		19,056	5,988,927	27,939	People Quick Facts
1a	c Population, percent change - April 1, 2010 (estimates base) to July 1, 2015	-2.4%		-2.0%	1.6%	-0.7%	People Quick Facts
1a	d Persons under 5 years, percent, July 1, 2015	6.0%		3.9%	6.2%	5.9%	People Quick Facts
1a	e Persons under 18 years, percent, July 1, 2015	22.3%		17.6%	22.9%	22.7%	People Quick Facts
1a	f Persons 65 years and over, percent, July 1, 2015	20.9%		29.2%	15.7%	18.6%	People Quick Facts
1a	g Female persons, percent, July 1, 2015	50.6%		49.7%	50.9%	50.2%	People Quick Facts
1a	h White alone, percent, July 1, 2015	95.5%		96.9%	83.3%	93.5%	People Quick Facts
1a	i Black or African American alone, percent, July 1, 2015	1.4%		0.5%	11.8%	3.2%	People Quick Facts
1a	j Hispanic or Latino, percent, July 1, 2015	2.2%		2.0%	4.1%	2.6%	People Quick Facts
1a	k American Indian and Alaska Native alone, percent, July 1, 2015	0.7%		0.7%	0.6%	5.5%	People Quick Facts
1a	l Asian alone, percent, July 1, 2015	0.4%		0.4%	2.0%	0.8%	People Quick Facts
1a	m Two or More Races, percent, July 1, 2015	1.9%		1.5%	2.2%	1.9%	People Quick Facts

Tab 1b Demographic Profile

Tab	Health Indicator	Henry County	Trend	Benton County	State of MO	MO Rural Norm (16)	Source
1b	a Foreign born persons, percent, 2010-2014	0.9%		0.7%	3.9%	1.6%	People Quick Facts
1b	b Language other than English spoken at home, percent of persons age 5 years+, 2010-2014	1.6%		1.8%	6.1%	3.3%	People Quick Facts
1b	c Population per square mile, 2010	32.0		27.1	87.1	43.6	Geography Quick Facts
1b	d % Rural	24.8%		86.5%	29.6%	62.5%	Census Population Estimates
1b	e Persons in poverty, percent	18.3%		19.5%	14.8%	16.5%	People Quick Facts
1b	f Children in poverty, percent, 2014	26.0%		31.0%	21.0%	23.8%	Small Area Income and Poverty Estimates
1b	g Veterans, 2010-2014	2,150		2,535	466,762	2,562	People Quick Facts
1b	h Registered Voters in Missouri, 2012	15,924		13,827	4,190,936	18,985	Missouri Centralized Voter Registration

Tab 2a Economic / Business Profile

Tab	Health Indicator	Henry County	Trend	Benton County	State of MO	MO Rural Norm (16)	Source
2a	a Median household income (in 2014 dollars), 2010-2014	\$39,880		\$33,145	\$47,764	\$42,709	People Quick Facts
2a	b Per capita income in past 12 months (in 2014 dollars), 2010-2014	\$22,230		\$19,412	\$26,006	\$21,556	People Quick Facts
2a	c Housing units, July 1, 2015	10,864		13,984	2,746,599	12,542	People Quick Facts
2a	d Owner-occupied housing unit rate, 2010-2014	72.7		84.0	67.9	72.3	People Quick Facts
2a	e Median value of owner-occupied housing units, 2010-2014	\$93,200		\$105,400	\$136,700	\$102,319	People Quick Facts
2a	f Households, 2010-2014	9,545		8,273	2,361,232	10,715	People Quick Facts
2a	g Persons per household, 2010-2014	2.3		2.3	2.5	2.5	People Quick Facts
2a	h Severe housing problems, percent, 2008-2012	12.0%		14.0%	15.0%	12.1%	Comprehensive Housing Affordability Strategy (CHAS) data
2a	i Living in same house 1 year ago, percent of persons age 1 year+, 2010-2014	83.5%		89.3%	83.9%	85.4%	People Quick Facts

Tab 2b Economic / Business Profile

Tab	Health Indicator	Henry County	Trend	Benton County	State of MO	MO Rural Norm (16)	Source
2b	a Grocery stores/1,000 pop, 2012	0.1		0.2	NA	0.2	U.S. Department of Agriculture - Food Environment Atlas
2b	b Low income and low access to store, percent, 2010	11.0%		2.2%	NA	6.8%	U.S. Department of Agriculture - Food Environment Atlas
2b	c Seniors, low access to store, percent, 2010	5.1%		1.7%	NA	3.2%	U.S. Department of Agriculture - Food Environment Atlas
2b	d SNAP participants (% pop), 2014	14.2%		14.2%	NA	14.2%	U.S. Department of Agriculture - Food Environment Atlas
2b	e All firms, 2012	2,213		1,802	491,606	2,205	Business Quick Facts
2b	f Unemployment, percent, 2014	6.4%		7.6%	6.1%	6.2%	Bureau of Labor Statistics

Tab 3 Educational Profile

Currently, school districts are providing on-site primary health screenings and basic care.

Tab	Health Indicator	Henry County	Trend	Benton County	State of MO	MO Rural Norm (16)	Source
3	a Children eligible for free lunch, percent, 2012-2013	41.0%		55.0%	38.0%	40.4%	National Center for Education Statistics
3	b High school graduate or higher, percent of persons age 25 years+, 2010-2014	87.0%		85.0%	88.0%	86.9%	People Quick Facts
3	c Bachelor's degree or higher, percent of persons age 25 years+, 2010-2014	15.1%		11.8%	26.7%	17.3%	People Quick Facts

Tab 3 Educational Profile

#	Health Indicators	Clinton School District (2016)	Shawnee R-III (2016)	Davis R-XII (2016)	Leesville R-IX (2016)	Calhoun R-VIII (2016)	Osceola (2013)	Warsaw R-IX (2013)	Henry County R-I (2016)	Holy Rosary (2016)	Christian Academy (2016)
1	Total Public School Nurses	3	0	1	0	0	1	6	0	0	0
2	School Nurse Part of IEP Team	NA	0	1	0	0	No	Yes	0	0	0
3	Active School Wellness Plan	Yes	Yes	Yes	Yes	Yes	Yes	Yes	Yes	Yes	Yes
4	VISION: # Screened / Referred to Prof / Seen by Professional	750	NA	NA	NA	NA	500/3/6	341/10/2	NA	NA	0 / 120
5	HEARING: # Screened / Referred to Prof / Seen by Professional	750	NA	NA	NA	NA	6/1/0500	341/0/0	NA	NA	120 / 4 / 4
6	ORAL HEALTH: # Screened / Referred to Prof / Seen by Professional	750	NA	NA	NA	NA	0	442/	NA	NA	71 / 2 / 2
7	SCOLIOSIS: # Screened / Referred to Prof / Seen by Professional	NA	NA	NA	NA	NA	80/2/0	Done in the Spring	NA	NA	120 / 0 / 0
8	Students Served with No Identified Chronic Health Concerns	NA	NA	NA	NA	NA	530	NA	NA	NA	106
9	School has Suicide Prevention Program	NA	NA	NA	NA	NA	No	Yes	NA	NA	No
10	Compliance on Required Vaccinations	NA	100%	NA	NA	100%	1	97%	100%	100%	Yes

TAB 4 Maternal / Infant Health Profile

Tracking maternal and infant care patterns are vital in understanding the foundation of family health.

Tab	Health Indicator	Henry County	Trend	Benton County	State of MO	MO Rural Norm (16)	Source
4 a	Care Began First Trimester, number of events, 2013	171.0		99.0	53,335	249.2	Missouri Department of Health and Senior Services
4 b	Mother Smoked During Pregnancy, number of events, 2013	64.0		43.0	13,155	73.6	Missouri Department of Health and Senior Services
4 c	Preterm Births (less than 37 Weeks Gestation), number of events, 2008-2012	135.0		90.0	47,443	192.6	Missouri Department of Health and Senior Services
4 d	Low Birth Weight, percent, 2007-2013	7.0%		7.0%	8.0%	7.4%	National Center for Health Statistics - Natality files
4 e	Teen births, number of events, 2007-2013	55.0		47.0	38	38.0	National Center for Health Statistics - Natality files
4 f	Out-of-Wedlock Births, number of events, 2009-2013	580.0		328.0	154,226	627.0	Missouri Department of Health and Senior Services
4 g	Infants Participating in WIC, number of events, 2012	208.0		99.0	43,767	211.4	Missouri Department of Health and Senior Services

TAB 4 Maternal / Infant Health Profile

Tab	Missouri Department of Health and Senior Services, Vital Statistics	Henry County	Trend	Benton County	State of MO
4	a Total Live Births, 2010	260		191	76,718
4	b Total Live Births, 2011	273		167	76,069
4	c Total Live Births, 2012	275		125	75,400
4	d Total Live Births, 2013	250		138	75,244
4	e Total Live Births, 2014	249		165	75,104

TAB 5 Hospitalization / Providers Profile

Understanding provider access and disease patterns are fundamental in healthcare delivery. Listed below are several vital county statistics.

Tab	Health Indicator	Henry County	Trend	Benton County	State of MO	MO Rural Norm (16)	Source
5	a Ratio of Primary Care physicians to population, 2013	1,470:1		2,700:1	1,420:1	2,241:1	Area Health Resource File/American Medical Association
5	a Ratio of Dentists to population, 2014	2,200:1		4,700:1	1,870:1	3,528:1	Area Health Resource File/National Provider Identification file
5	b Preventable hospital stays per 1,000, 2013	71.0		71.0	59.0	68.0	Dartmouth Atlas of Health Care
5	c Patients who gave their hospital a rating of 9 or 10 on a scale from 0 (lowest) to 10 (highest)	70.0%		NA	72.0%	68.5%	CMS Hospital Compare, 1/1/2015-12/31/2015
5	d Patients who reported YES, they would definitely recommend the hospital	63.0%		NA	70.0%	64.0%	CMS Hospital Compare, 1/1/2015-12/31/2015
5	e Average Time Patients Spent in the Emergency Department Before They Were Seen by a Healthcare Professional, minutes	19.0		NA	21.0	16.5	CMS Hospital Compare, 1/1/2015-12/31/2015

#	MHA PO103	Henry County, MO			Trend
		FFY13	FFY14	FFY15	
1	Total Discharges	4,032	3,802	3,597	
2	Total IP Discharges-Age 0-17 Ped	130	121	83	
3	Total IP Discharges-Age 18-44	453	412	340	
4	Total IP Discharges-Age 45-64	895	932	867	
5	Total IP Discharges-Age 65-74	677	674	665	
6	Total IP Discharges-Age 75+	1,028	802	834	
7	Psychiatric	336	327	310	
8	Obstetric	265	271	269	
9	Surgical %	28.7%	29.1%	28.3%	
#	MHA PO103	GVMH Only			Trend
1	Total Discharges	1,690	1,595	1,488	
2	Total IP Discharges-Age 0-17 Ped	19	19	13	
3	Total IP Discharges-Age 18-44	217	177	142	
4	Total IP Discharges-Age 45-64	345	371	315	
5	Total IP Discharges-Age 65-74	240	236	232	
6	Total IP Discharges-Age 75+	475	397	412	
7	Psychiatric	14	11	23	
8	Obstetric	199	197	187	
9	Surgical %	23.1%	25.7%	22.4%	
#	MHA TOT223E	FFY13	FFY14	FFY15	Trend
1	Emergency Market Share	80.0%	80.4%	78.1%	
2	Surgery Market Share	33.6%	36.1%	29.7%	

TAB 6 Behavioral Health Profile

Behavioral healthcare provides another important indicator of community health status.

Tab	Health Indicator	Henry County	Trend	Benton County	State of MO	MO Rural Norm (16)	Source
6 a	Children in single-parent households, percent, 2010-2014	32.0%		26.0%	33.0%	29.7%	American Community Survey, 5-year estimates
6 b	Poor mental health days, 2014	4.0		4.1	3.7	3.9	Behavioral Risk Factor Surveillance System
6 c	Depression Medicare beneficiaries, percent, 2013	18.3%		17.4%	19.1%	17.4%	CCW (CMS)
6 d	Ratio of Mental Health providers to population, 2015	450:1		2,090:1	600:1	1,978:1	CMS, National Provider Identification
6 e	Violent crime rate per 100,000, 2010-2012	383.0		305.0	452.0	241.8	Uniform Crime Reporting - FBI
6 f	Alcohol-impaired driving deaths, percent, 2010-2014	17.0%		33.0%	33.0%	33.9%	Fatality Analysis Reporting System
6 g	Drug overdose deaths per 100,000, 2012-2014	15.0		26.0	17.0	17.1	CDC WONDER mortality data

Tab	Diagnosis Category	Henry County			Trend	Source
		2015	2014	2013		
Individuals who received psychiatric services had the following types of disorders. The total number of diagnoses is larger than the number served because some individuals had more than one type of disorder.						
6 a	Adjustment Disorder	27	27	32		Missouri Department of Mental Health
6 b	Anxiety Disorder	237	240	255		Missouri Department of Mental Health
6 c	Dementia	0	0	0		Missouri Department of Mental Health
6 d	Developmental Disorder	NA	NA	6		Missouri Department of Mental Health
6 e	Impulse Control Disorder	46	37	46		Missouri Department of Mental Health
6 f	Mood Disorder	297	338	373		Missouri Department of Mental Health
6 g	Personality Disorder	39	38	45		Missouri Department of Mental Health
6 h	Psychotic Disorder	57	69	74		Missouri Department of Mental Health
6 i	Sexual Disorder	0	0	0		Missouri Department of Mental Health

Tab	Diagnosis Category	Benton County			Trend	Source
		2015	2014	2013		
Individuals who received psychiatric services had the following types of disorders. The total number of diagnoses is larger than the number served because some individuals had more than one type of disorder.						
6 a	Adjustment Disorder	13	14	21		Missouri Department of Mental Health
6 b	Anxiety Disorder	163	172	205		Missouri Department of Mental Health
6 c	Dementia	0	0	0		Missouri Department of Mental Health
6 d	Developmental Disorder	NA	NA	NA		Missouri Department of Mental Health
6 e	Impulse Control Disorder	47	32	30		Missouri Department of Mental Health
6 f	Mood Disorder	175	187	214		Missouri Department of Mental Health
6 g	Personality Disorder	8	15	20		Missouri Department of Mental Health
6 h	Psychotic Disorder	34	31	33		Missouri Department of Mental Health
6 i	Sexual Disorder	0	0	NA		Missouri Department of Mental Health

TAB 7a Risk Indicators / Factors Profile

Knowing community health risk factors and disease patterns can aid in the understanding of next steps to improve health. Being overweight / obese, smoking, drinking in excess, not exercising, etc. can lead to poor health.

Tab	Health Indicator	Henry County	Trend	Benton County	State of MO	MO Rural Norm (16)	Source
7a a	Adult smoking, percent, 2014	21.0%		20.0%	21.0%	20.8%	Behavioral Risk Factor Surveillance System
7a b	Physical inactivity, percent, 2012	30.0%		32.0%	26.0%	29.4%	CDC Diabetes Interactive Atlas
7a c	Poor physical health days, 2014	4.3		4.5	4.1	4.2	Behavioral Risk Factor Surveillance System
7a d	Adult obesity, percent, 2012	32.0%		32.0%	31.0%	32.8%	CDC Diabetes Interactive Atlas
7a e	Diabetes prevalence, percent, 2012	11.0%		14.0%	10.0%	11.1%	CDC Diabetes Interactive Atlas
7a f	Excessive drinking, percent, 2014	14.0%		13.0%	16.0%	15.3%	Behavioral Risk Factor Surveillance System
7a g	Sexually transmitted infections per 100,000, 2013	248.3		137.1	453.8	308.8	National Center for HIV/AIDS, Viral Hepatitis, STD, and TB Prevention
7a h	Mean travel time to work, workers age 16 years+, minutes, 2010-2014	21.9		28.5	23.1	23.0	People Quick Facts
7a i	Long commute - driving alone, percent, 2010-2014	29.0%		42.0%	30.0%	31.8%	American Community Survey
7a j	Estimated Number and Percentage of workers over 16 years that Walked, percent, 2006-2010	1.8%		3.4%	2.0%	2.8%	United States Department of Labor, Bureau of Labor Statistics
7a k	Estimated Annual Total Number of Work-Related Injuries and Illnesses Involving Days Away from Work, 2012	9.1		9.4	10.2	9.6	United States Department of Labor, Bureau of Labor Statistics
7a l	Food Insecurity Rate, percent, 2014	15.8%		15.5%	16.8%	15.6%	Feeding America
7a m	Air pollution - particulate matter, average daily density in micrograms per cubic meter, 2011	9.1		9.4	10.2	9.6	CDC WONDER environmental data
7a n	Drinking water violations, FY2013-FY2014	Yes		Yes	Yes	Yes	Safe Drinking Water Information System

TAB 7b Risk Indicators / Factors Profile

Tab	Health Indicator	Henry County	Trend	Benton County	State of MO	MO Rural Norm (16)	Source
7b a	Asthma Medicare beneficiaries, percent, 2013	3.1%		3.7%	4.7%	3.8%	CCW (CMS)
7b b	Atrial fibrillation Medicare beneficiaries, percent, 2013	8.9%		9.1%	8.0%	8.6%	CCW (CMS)
7b d	Chronic kidney disease Medicare beneficiaries, percent, 2013	12.2%		11.0%	16.4%	13.3%	CCW (CMS)
7b e	Chronic obstructive pulmonary disease (COPD) Medicare beneficiaries, percent, 2013	14.8%		17.7%	13.1%	13.6%	CCW (CMS)
7b f	Heart failure Medicare beneficiaries, percent, 2013	16.2%		14.0%	13.9%	14.7%	CCW (CMS)
7b g	High cholesterol Medicare beneficiaries, percent, 2013	32.4%		45.2%	42.6%	40.2%	CCW (CMS)
7b h	Hypertension Medicare beneficiaries, percent, 2013	50.3%		52.8%	55.0%	53.9%	CCW (CMS)
7b i	Osteoporosis Medicare beneficiaries, percent, 2013	3.0%		3.9%	6.0%	5.1%	CCW (CMS)
7b k	Stroke Medicare beneficiaries, percent, 2013	3.1%		3.9%	3.7%	3.4%	CCW (CMS)

TAB 8 Uninsured Profile

Based on state estimations, the number of insured is documented below. Also, the amount of charity care from area providers is trended below.

Tab	Health Indicator	Henry County	Trend	Benton County	State of MO	MO Rural Norm (16)	Source
8 a	Uninsured, percent, 2013	16.0%		22.0%	15.0%	17.0%	Small Area Health Insurance Estimates
8 b	Uninsured adults, percent, 2013	17.0%		25.0%	18.0%	20.3%	Small Area Health Insurance Estimates
8 c	Uninsured children, percent, 2013	7.0%		11.0%	7.0%	8.6%	Small Area Health Insurance Estimates

	Golden Valley Memorial Healthcare	YR 2013	YR 2014	YR 2015	Trend
1	Bad Debt	\$7,536,710	\$8,800,863	\$9,220,423	
2	Charity Care	\$3,787,572	\$5,368,972	\$4,846,494	

*Internal Hospital Records

	Compass Health Network	YR 2013	YR 2014	YR 2015	Trend
1	Pathways Charity Care (Service Area)	\$1,260,000	\$1,570,000	\$2,590,000	

*Compass Health Network Internal Records

	Henry County Health Center	YR 2013	YR 2014	YR 2015	Trend
1	Community Nursing Services	\$21,902	\$18,950	\$18,084	

*Henry County Health Center Internal Records

TAB 9 Mortality Profile

The leading causes of county deaths are listed below. Areas of higher than expected are so noted.

Tab	Health Indicator	Henry County	Trend	Benton County	State of MO	MO Rural Norm (16)	Source
9 a	Life Expectancy for Males, 2004-2012	72.6		73.4	74.6	74.4	Missouri Department of Health and Senior Services
9 b	Life Expectancy for Females, 2004-2012	78.1		78.8	79.7	79.3	Missouri Department of Health and Senior Services
9 c	Premature death, Years of Potential Life Lost Rate, 2011-2013	8,700.0		9,300.0	7,700.0	7,718.8	National Center for Health Statistics - Mortality Files
9 d	Heart Disease Mortality, number of events, 2014	79.0		76.0	14,210.0	79.2	Missouri Department of Health and Senior Services
9 e	Chronic Lower Respiratory Disease Mortality, number of events, 2014	19.0		34.0	3,739.0	25.3	Missouri Department of Health and Senior Services
9 f	Motor vehicle crash deaths per 100,000, 2007-2013	16.0		26.0	15.0	20.9	CDC WONDER mortality data
9 g	Injury deaths per 100,000, 2009-2013	94.0		104.0	74.0	74.8	CDC WONDER mortality data
9 h	Injury at Work - Deaths, number of events, 2003-2013	5.0		9.0	14,160.0	7.3	Missouri Department of Health and Senior Services
9 i	Suicides, number of events, 2014	5.0		9.0	1,004.0	6.6	Missouri Department of Health and Senior Services

TAB 9 Mortality Profile

#	Causes of Death by County of Residence, Missouri Department of Health and Senior Services, 2014	Henry County	%	Trend	Benton County	%	State of MO	%
	All Causes	306	100.0%		316	100.0%	58,141	100.0%
1	Cancer	81	26.5%	4.1%	72	22.8%	13,009	22.4%
2	Heart disease	79	25.8%	1.4%	76	24.1%	14,210	24.4%
3	Other diseases (residual)	32	10.5%	-1.6%	32	10.1%	6,983	12.0%
4	Chronic lower respiratory diseases	19	6.2%	-0.2%	34	10.8%	3,739	6.4%
5	Cerebrovascular disease (Stroke)	16	5.2%	0.1%	14	4.4%	3,010	5.2%
6	Alzheimer's disease	11	3.6%	0.1%	7	2.2%	2,047	3.5%
7	Diabetes	8	2.6%	0.2%	10	3.2%	1,413	2.4%
8	All other accidents and adverse effects	8	2.6%	-1.5%	14	4.4%	2,377	4.1%
9	Other major cardiovascular diseases	7	2.3%	1.6%	4	1.3%	417	0.7%
10	Other respiratory diseases	6	2.0%	0.5%	3	0.9%	841	1.4%
11	Other digestive diseases	6	2.0%	-0.3%	8	2.5%	1,319	2.3%
12	Kidney disease (nephritis/nephrotic syndrome/nephrosis)	6	2.0%	-0.5%	11	3.5%	1,446	2.5%

TAB 10 Preventive Quality Measures Profile

The following table reflects the future health of the county. This information also is an indicator of community awareness of preventative measures.

Tab	Health Indicator	Henry County	Trend	Benton County	State of MO	MO Rural Norm (16)	Source
10 a	Access to exercise opportunities, percent, 2014	51.0%		50.0%	76.0%	48.6%	Business Analyst, Delorme map data, ESRI, & US Census Tigerline Files
10 b	Ate fruits and vegetables less than 5 times per day, percent, 2011	85.5%		89.4%	87.5%	88.5%	Missouri Department of Health and Senior Services
10 b	Limited access to healthy foods, percent, 2010	6.0%		2.0%	6.0%	6.8%	USDA Food Environment Atlas
10 c	Diabetic monitoring, percent, 2013	88.0%		86.0%	86.0%	84.3%	Dartmouth Atlas of Health Care
10 d	Mammography screening, percent, 2013	54.0%		56.0%	62.0%	58.8%	Dartmouth Atlas of Health Care
10 e	No pap test in last 3 years - among women age 18 and older, percent, 2011	43.3%		39.3%	26.4%	33.5%	Missouri Department of Health and Senior Services
10 f	Had no sigmoidoscopy or colonoscopy in last 10 years - among men and women age 50 and older, percent, 2011	43.6%		37.5%	38.0%	40.9%	Missouri Department of Health and Senior Services
10 h	Percent Annual Check-Up Visit with PCP				NA	NA	TBD
10 i	Percent Annual Check-Up Visit with Dentist				NA	NA	TBD
10 j	Percent Annual Check-Up Visit with Eye Doctor				NA	NA	TBD

III. Community Health Status

b) Community Feedback Research

For a CHNA, it's also important to gather community perspective from key stakeholders on their views of progress to address the baseline CHNA needs documented three years ago. Below are findings of this online community primary research:

Question 1—Overall Quality of Healthcare Delivery

Golden Valley Memorial Healthcare (PSA) - Clinton, MO N=349						
1. Three years ago, Golden Valley Memorial Healthcare, Henry County Health Center and Compass Health completed a Community Health Needs Assessment (CHNA). This assessment identified a number of health needs for our community. Today, we are updating this assessment and would like to know how you rate the "Overall Quality" of healthcare delivery in our community?						
Answer Options	Very Good	Good	Fair	Poor	Very Poor	Valid N
Henry County Only N=205	39	107	49	10	0	205
Top 2 Boxes (Very Good / Good)	71.2%		14.0%	2.9%	0.0%	
Golden Valley Memorial Healthcare PSA N=349	65	185	85	14	0	349
Top 2 Boxes (Very Good / Good)	71.6%		24.4%	4.0%	0.0%	
Option C Stakeholders Round #2	1,180	2,615	1,094	167	31	5,087
Top 2 Boxes (Very Good / Good)	74.6%		21.5%	3.3%	0.6%	

Question 9—Requested Discussion Items for Town Hall Agenda

Golden Valley Memorial Healthcare (PSA) - Clinton, MO N=349				
9. Are there any other health needs from the list below that need to be discussed at our upcoming CHNA Town Hall meeting?	Option C Stakeholders Round #2 Bottom 2 Boxes	GVMH PSA N=249	Henry County N=205	Trend (Option C Norm to Henry Co)
Abuse / Violence	4.8%	5.6%	5.6%	
Alcohol	4.7%	3.7%	3.7%	
Cancer	4.7%	4.3%	4.3%	
Diabetes	4.9%	3.5%	3.2%	
Drugs / Substance Abuse	8.8%	13.5%	13.4%	
Family Planning	2.8%	2.4%	2.2%	
Heart Disease	3.7%	2.4%	2.5%	
Lead Exposure	0.8%	0.8%	0.8%	
Mental Illness	9.0%	8.8%	8.7%	
Nutrition	4.9%	3.5%	3.5%	
Obesity	7.8%	7.6%	7.8%	
Ozone	5.2%	0.3%	0.4%	
Physical Exercise	5.5%	3.8%	4.1%	
Poverty	2.6%	8.9%	9.0%	
Respiratory Disease	2.3%	1.8%	1.4%	
Restaurant Inspections	0.1%	2.6%	2.6%	
Sexual Transmitted Diseases	4.9%	2.5%	2.5%	
Suicide	3.7%	4.7%	4.8%	
Teen Pregnancy	4.1%	5.0%	5.1%	
Tobacco Use	3.7%	4.2%	4.0%	
Vaccinations	3.1%	2.7%	2.5%	
Water Quality	5.8%	3.4%	3.7%	
Wellness	1.7%	4.2%	4.1%	
Other (please specify)	0.8%	1.8%	1.7%	
TOTAL	100.0%	100.0%	100.0%	

Questions 5-6—Rating of Healthcare Services

Golden Valley Memorial Healthcare (PSA) - Clinton, MO N=349				
5. How would you rate each of the following services offered in the Golden Valley Memorial Healthcare Primary Service Area?	Option C Stakeholders Round #2 Bottom 2 Boxes	GVMH PSA N=349	Henry County N=205	Trend (Option C Norm to Henry Co)
Ambulance Services	4.9%	4.4%	4.5%	
Behavioral Health Inpatient Services	29.0%	29.0%	28.7%	
Behavioral Health Outpatient Services	21.4%	21.4%	22.1%	
Child Care	16.5%	19.2%	19.9%	
Chiropractors	3.8%	9.7%	10.7%	
Dentists	6.7%	12.1%	12.4%	
Emergency Room	12.6%	26.4%	28.6%	
Eye Doctor / Optometrist	8.8%	5.4%	3.6%	
Family Planning Services	8.7%	14.4%	14.4%	
Home Health	4.8%	2.3%	2.3%	
Hospice	2.4%	2.4%	1.2%	
Medical Inpatient Services	5.7%	4.2%	4.8%	
Medical Outpatient Services	4.2%	1.7%	2.1%	
Mental Health Services	4.8%	31.9%	33.3%	
Nursing Home	14.9%	31.6%	33.9%	
Pharmacy	5.8%	1.7%	1.0%	
Primary Care	11.4%	2.4%	3.0%	
Public Health Department	31.9%	6.0%	6.3%	
School Nurse	9.3%	8.7%	10.7%	
Specialists	5.2%	4.2%	4.2%	

Question 8—Healthcare Services Outside of PSA

Golden Valley Memorial Healthcare (PSA) - Clinton, MO N=349				
8. Throughout the past two years, did you or someone you know receive healthcare services outside of the Golden Valley Memorial Healthcare Primary Service Area?	Option C Stakeholders Round #2 Bottom 2 Boxes	GVMH PSA N=349	Henry County N=205	Trend (Option C Norm to Henry Co)
Yes	78.4%	77.4%	77.0%	
No	15.0%	16.7%	17.2%	
Don't know	6.7%	6.0%	5.9%	
TOTALS	100.0%	100.0%	100.0%	

IV. Inventory of Community Health Resources

[VVV Consultants LLC]

Inventory of Healthcare Services - GVMH PSA				
Cat	Healthcare Services Offered in County: Yes / No	Hospital	Health Dept.	Other
Clinic	Primary Care	x		x
Hosp	Alzheimer Center			x
Hosp	Ambulatory Surgery Centers			
Hosp	Arthritis Treatment Center	x		
Hosp	Bariatric / Weight Control Services	x		
Hosp	Birthing / LDR / LDRP Room	x		
Hosp	Breast Cancer Services	x		
Hosp	Burn Care	x		
Hosp	Cardiac Rehabilitation	x		
Hosp	Cardiac Surgery			
Hosp	Cardiology Services	x		
Hosp	Case Management	x		x
Hosp	Chaplaincy / Pastoral Care	x		
Hosp	Chemotherapy	x		
Hosp	Colonoscopy	x		
Hosp	Crisis Prevention			x
Hosp	CT Scanner	x		
Hosp	Diagnostic Radioisotope Facility	x		
Hosp	Diagnostic / Invasive Catheterization			
Hosp	Electron Beam Computed Tomography (EBCT)			
Hosp	Enrollment Assistance	x	x	x
Hosp	Extracorporeal Shock Wave Lithotripter (ESWL)			
Hosp	Fertility Clinic			
Hosp	Full Field Digital Mammography (FFDM)	x		x
Hosp	Genetic Testing / Counseling			
Hosp	Geriatric Services	x	x	x
Hosp	Heart Services	x		
Hosp	Hemodialysis			x
Hosp	HIV / AIDS Services			
Hosp	Image-Guided Radiation Therapy (IGRT)			
Hosp	Inpatient Acute Care Services	x		
Hosp	Intensity-Modulated Radiation Therapy (IMRT) 161			
Hosp	Intensive Care Unit	x		
Hosp	Intermediate Care Unit	x		
Hosp	Interventional Cardiac Catheterization			
Hosp	Isolation Room	x		
Hosp	Kidney Services	x		x
Hosp	Liver Services	x		
Hosp	Lung Services	x		
Hosp	Magnetic Resonance Imaging (MRI)	x		
Hosp	Mammograms	x		x
Hosp	Mobile Health Services	x		
Hosp	Multi-slice Spiral Computed Tomography (<64 Slice CT)			
Hosp	Multi-slice Spiral Computed Tomography (64+ Slice CT)	x		
Hosp	Neonatal Services			
Hosp	Neurological services	x		
Hosp	Obstetrics Services	x		
Hosp	Occupational Health Services	x		
Hosp	Oncology Services	x		
Hosp	Orthopedic Services	x		

Inventory of Healthcare Services - GVMH PSA				
Cat	Healthcare Services Offered in County: Yes / No	Hospital	Health Dept.	Other
Hosp	Outpatient Surgery	x		
Hosp	Pain Management	x		
Hosp	Palliative Care Program	x		x
Hosp	Pediatric Services	x		x
Hosp	Physical Rehabilitation	x		
Hosp	Positron Emission Tomography (PET)			
Hosp	Positron Emission Tomography / CT (PET / CT)	x		
Hosp	Psychiatric Services			x
Hosp	Radiology, Diagnostic	x		
Hosp	Radiology, Therapeutic	x		
Hosp	Reproductive Health			
Hosp	Robotic Surgery			
Hosp	Shaped Beam Radiation System 161			
Hosp	Single Photon Emission Computerized Tomography			
Hosp	Sleep Center	x		
Hosp	Social Work	x	x	x
Hosp	Sports Medicine	x		
Hosp	Stereotactic Radiosurgery	x		
Hosp	Swing Bed Services	x		
Hosp	Transplant Services			
Hosp	Trauma Center -Level IV			
Hosp	Ultrasound	x		x
Hosp	Women's Health Services	x		x
Hosp	Wound Care	x		
SR	Adult Day Care Program			x
SR	Assisted Living			x
SR	Home Health	x		x
SR	Hospice			x
SR	Long-term Care			x
SR	Nursing Home			x
SR	Retirement Housing			x
SR	Skilled Nursing Care	x		x
ER	Emergency Services	x		
ER	Urgent Care Center			
ER	Ambulance Services	x		x
SERV	Alcoholism-Drug Abuse Services			x
SERV	Blood Donor Center	x		
SERV	Chiropractic Services			x
SERV	Complementary Medicine Services	x	x	x
SERV	Dental Services			x
SERV	Fitness Center	x		x
SERV	Health Education Classes	x		x
SERV	Health Fair	x		x
SERV	Health Information Center	x	x	x
SERV	Health Screenings	x	x	x
SERV	Meals on Wheels			x
SERV	Nutrition Program	x	x	x
SERV	Patient Education Center	x	x	x
SERV	Support Groups	x		x

Inventory of Healthcare Services - GVMH PSA				
Cat	Healthcare Services Offered in County: Yes / No	Hospital	Health Dept.	Other
SERV	Teen Outreach Services			x
SERV	Tobacco Treatment / Cessation Program	x		x
SERV	Transportation to Health Facilities	x		x
SERV	Wellness Program	x		x

Providers Delivering Care GVMH - Primary Service Area

FTE Providers Working in PSA	FTE Physicians		FTE Allied Staff
	FTE MD / DO	Visiting DR*	FTE NP / PA
Primary Care:			
Family Practice	23.0		14.0
Internal Medicine / Geriatrics	3.0		
Obstetrics / Gynecology	2.5		
Pediatrics	1.0		
Medicine Specialists:			
Allergy / Immunology			
Cardiology		1.6	
Dermatology			
Endocrinology			
Gastroenterology			
Oncology / Radiology		0.6	
Infectious Disease			
Nephrology		1.0	
Neurology	1.0		
Psychiatry	15.6		2.0
Pulmonary		0.3	
Rheumatology		0.1	
Surgery Specialists:			
General Surgery / Colon / Oral	3.0		
Neurosurgery			
Ophthalmology	1.0		
Orthopedics	1.0		
Otolaryngology	1.0		
Plastic / Reconstructive Surgery			
Thoracic / Cardiovascular / Vascular Surgery			
Urology	1.0		
Hospital Based:			
Anesthesia / Pain Management	1.2		5.0
Emergency Medicine	4.7		1.0
Radiology	2.5		
Pathology		1.0	
Hospitalist			
Neonatology / Perinatology			
Physical Medicine / Rehabilitation			
Occupational Medicine			
Podiatry	0.5		
Chiropractic	9.0		
Optometry	7.0		
Dental	14.0		
TOTALS	92.0	4.5	22.0

*FTE Specialists serving the community who office outside the PSA

Visiting Specialists to Golden Valley Memorial Healthcare

Specialty	Physician Name	Office Location	Schedule	Days per Month
Cardiology	Blackburn, Timothy	Kansas City, MO	Mondays, Wednesdays and Fridays (9-5)	12
Cardiology	Hilbrenner, Jo (NP)	Kansas City, MO	Tuesdays (9-4)	4
Cardiology	Rios, David	Kansas City, MO	1 Thursday per Month (8-4:30)	1
Oncology	Cox, Sandra	Kansas City, MO	Tuesdays (9-6)	4
Oncology	Kenney, Lara	Kansas City, MO	Mondays and Thursdays (8-4:30)	8
Oncology	Singh, Jaswinder	Kansas City, MO	Tuesdays (9-6)	4
Pulmonary	Van Duyne, Nichole	Kansas City, MO	Mondays (9-2:30)	4
Pulmonary	Beary, William	Kansas City, MO	Mondays (9-2:30)	4
Pulmonary	Mieczkowski,	Kansas City, MO	Mondays (9-2:30)	4
Pulmonary	Chasey, Richard	Kansas City, MO	Mondays (9-2:30)	4
Pulmonary	Gaur, Neeta	Kansas City, MO	Mondays (9-2:30)	4
Pulmonary	Beller, Thomas	Kansas City, MO	Mondays (9-2:30)	4
Nephrology	Lustig, Ryan	Kansas City, MO	1 Monday per Month (9-2) / 1 Thursday per Month (9-4:30)	2
Nephrology	Reid, Gerald	Kansas City, MO	2 Wednesdays per Month (9-5)	2
Nephrology	Bender, Walter	Kansas City, MO	3 Wednesdays per Month (9-5)	2
Nephrology	Capling, Richard	Kansas City, MO	1 Monday per Month (9-2)	1
Rheumatology	Teng, Connie	Nevada, MO	On Call	NA

Henry and Benton Counties, Missouri Healthcare Resources Directory

Emergency Numbers

Police/Sheriff	911
Fire	911
Ambulance	911

Non-Emergency Numbers

	<i>Sheriff</i>	<i>Ambulance</i>
Clinton	(660) 885-7021	(660) 890-7180
Warsaw	(660) 438-6135	

Other Rural Non-Emergency Numbers

Clinton Police	(660) 885-6121
Warsaw Police	(660) 438-5262
Clinton Fire	(660) 885-2560

Hospitals

Golden Valley Memorial Healthcare
1600 N. Second St.
Clinton, MO 64735
660-885-5511

Clinics

Clinton

Cardiology

Cardiology Clinic, Cardiac Care
Cardiology
1600 N. Second
Clinton, MO 64735

Dermatology

Viseslav Tonkovic, MD
Dermatology
Golden Valley Medical – Clinton
1602 N. Second
Clinton, MO 64735
660-890-8511

Ear, Nose and Throat / Otolaryngology

Richard H. Woodland, DO
Ear, Nose and Throat/Otolaryngology
Golden Valley Medical – Clinton
1602 N. Second
Clinton, MO 64735
660-890-8444

Renee Baker, FNP-BC
Ear, Nose and Throat/Otolaryngology
Golden Valley Medical – Clinton
1602 N. Second
Clinton, MO 64735
660-890-8444

Family Practice

Compass Health Network
Pathways Community Health
Family Practice
1800 Community Drive
Clinton, MO 64735
1-844-863-8937

Timothy B. Gabbert, DO
Family Practice
Golden Valley Medical – Clinton
1602 N. Second
Clinton, MO 64735
660-890-8459

Mark P. Snell, DO
Family Practice
Golden Valley Medical – Clinton
1602 N. Second
Clinton, MO 64735
660-890-8463

Brendan P. Bagley, MD
Family Practice
Golden Valley Medical – Clinton
1602 N. Second
Clinton, MO 64735
660-890-8465

Brian K. Bellamy, MD
Family Practice
Saint Luke's Medical – Clinton
603 Gaines Drive
Clinton, MO 64735
660-885-8141

Bruce G. Bellamy, MD
Family Practice
Saint Luke's Medical – Clinton
603 Gaines Drive
Clinton, MO 64735
660-885-8141

Manik Mehra, MD
Family Practice
Saint Luke's Medical – Clinton
603 Gaines Drive
Clinton, MO 64735
660-885-8141

Michelle Brown, FNP-BC
Family Practice
Golden Valley Medical – Clinton
1602 N. Second
Clinton, MO 64735
660-890-8467

Janet L. Hankins, MD
Family Practice
Golden Valley Medical – Clinton
1602 N. Second
Clinton, MO 64735
660-890-8461

Elizabeth A. Logan, DO
Family Practice
1602 N. Second
Clinton, MO 64735
660-890-8466

Amie Christensen-Etters, MD
Family Practice
1602 N. Second
Clinton, MO 64735
660-890-8426

Stephanie Pfautz, FNP-BC
Family Practice
Golden Valley Medical – Clinton
1602 N. Second
Clinton, MO 64735
660-890-8462

Bradley M. Townsend, MD
Family Practice
Clinton Medical Clinic
1413 S. 2nd St
Clinton, MO 64735
660-885-7776

General Surgery

Sunanda G. Ghosh, MD
General Surgery
Golden Valley Medical – Clinton
1602 N. Second
Clinton, MO 64735
660-890-8470

Gus S. Wetzel, MD
General Surgery
Golden Valley Medical – Clinton
1602 N. Second
Clinton, MO 64735
660-890-8471

Rob Wetzel, MD
General Surgery
Saint Luke's Medical – Clinton
603 Gaines Drive
Clinton, MO 64735
660-885-8141

Internal Medicine

James C. Clouse, DO, FACIO-FACNP
Internal Medicine
Golden Valley Medical – Clinton
1602 N. Second
Clinton, MO 64735
660-890-8468

Alice Ruttinger, DO, FACOI
Internal Medicine
Golden Valley Medical – Clinton
1602 N. Second
Clinton, MO 64735
660-890-8171

Mark D. Vogt, DO, FACP
Internal Medicine
Golden Valley Medical – Clinton
1602 N. Second
Clinton, MO 64735
660-890-8469

Jacqueline Chung, M.D.
Internal Medicine
Golden Valley Medical – Clinton
1602 N. Second
Clinton, MO 64735
660-890-8469

Neurology

Abul F. Ali, MD
Neurology
Golden Valley Medical – Clinton
1602 N. Second
Clinton, MO 64735
660-890-8480

Rebecca Fredrich, NP
Neurology
Golden Valley Medical – Clinton
1602 N. Second
Clinton, MO 64735
660-890-8480

Obstetrics and Gynecology

Ken V. Holt, DO, FACOG
Obstetrics and Gynecology
Golden Valley Medical – Clinton
1602 N. Second
Clinton, MO 64735
660-890-8460

Pamela McCool, DO
Obstetrics and Gynecology
Golden Valley Medical – Clinton
1602 N. Second
Clinton, MO 64735
660-890-8427

Gary W. Taney, MD
Obstetrics and Gynecology
Golden Valley Medical – Clinton
1602 N. Second
Clinton, MO 64735
660-890-8427

Oncology

Oncology Clinic
Oncology
Golden Valley Memorial Healthcare –
Outpatient Treatment Center
1600 N. Second
Clinton, MO 64735
660-890-7266

Ophthalmology

Louis Monoco II, DO
Ophthalmology
Golden Valley Medical – Clinton
1602 N. Second
Clinton, MO 64735
660-890-8446

Orthopedic Surgery

Luke Schumacher, Physician Assistant
Orthopedic Surgery
Golden Valley Medical – Clinton
1602 N. Second
Clinton, MO 64735
660-890-8443

James L. Womack, MD
Orthopedic Surgery
Golden Valley Medical – Clinton
1602 N. Second
Clinton, MO 64735
660-890-8443

Pain Management

Pain Management
1600 N. Second
Clinton, MO 64735
660-890-7162

Pediatrics

Aften Anderson, MD
Pediatrics
Golden Valley Medical – Clinton
1602 N. Second
Clinton, MO 64735
660-890-8443

Emily Baker, FNP-BC
Pediatrics
Golden Valley Medical – Clinton
1602 N. Second
Clinton, MO 64735
660-890-8443

Podiatry

Kenneth L. Bradshaw, DPM
Golden Valley Medical – Clinton
1602 N. Second
Clinton, MO 64735
660-890-8445

Pulmonology

Pulmonology Clinic
Pulmonology
Golden Valley Memorial Healthcare
1600 N. Second
Clinton, MO 64735
660-890-7194

Rheumatology

Rheumatology Clinic
Rheumatology
Golden Valley Memorial Healthcare
1600 N. Second
Clinton, MO 64735
660-885-8171

Urology

Joseph Myers, M.D.
Urology
1602 N. Second
Clinton, MO 64735
660-890-8512

Wound Care

Wound / Skin Care Clinic
Golden Valley Memorial Healthcare
1600 N. Second
Clinton, MO 647353
660-890-7245

Warsaw

Family Medicine with Obstetrics

Drew A. Smith, MD
Family Medicine with Obstetrics
Golden Valley Medical – Warsaw
1771 Commercial
Warsaw, MO

Family Practice

Mark P. Snell, DO
Family Practice
Golden Valley Medical – Warsaw
1771 Commercial
Warsaw, MO 65355
660-890-8463 or 660-438-5193

Amber B. Campbell, DO
Family Practice
Golden Valley Medical – Warsaw
1771 Commercial
Warsaw, MO 65355
660-438-5193

Jared Beck, DO
Family Practice
Golden Valley Medical – Warsaw
1771 Commercial
Warsaw, MO 65355
660-438-5193

David W. Wood, DO
Family Practice
Golden Valley Medical – Warsaw
1771 Commercial
Warsaw, MO 65355
660-438-5193

Leah Rogers, PA-C
Family Practice
Golden Valley Medical – Warsaw
1771 Commercial
Warsaw, MO 65355
660-438-5193

Brenda Jones, FNP-BC
Family Practice
Golden Valley Medical – Warsaw
1771 Commercial
Warsaw, MO 65355
660-438-5193

Podiatry

Kenneth L. Bradshaw, DPM
Podiatry
Golden Valley Medical – Warsaw
1771 Commercial
Warsaw, MO 65355
660-438-5193

Windsor

Family Practice

William R. Dailey, MD
Family Practice
Golden Valley Medical – Windsor
100 S. Tebo
Windsor, MO 65360
660-647-2147

Katie Terry, FNP-BC
Family Practice
Golden Valley Medical – Windsor
100 S. Tebo
Windsor, MO 65360
660-647-2147

Meg Beebe, NP
Family Practice
Golden Valley Medical – Windsor
100 S. Tebo
Windsor, MO 65360
660-647-2147

George E. Windsor, DO
Family Practice
Golden Valley Medical – Windsor
100 S. Tebo
Windsor, MO 65360
660-647-2111

Children and Youth

Boys and Girls Town National Hotline
1-800-448-3000
www.girlsandboystown.org

Child / Adult Abuse and Neglect Hotline
800-922-5330

Child Abuse National Hotline
800-422-4453
800-222-4453 (TDD)
www.childhelp.org

Child Abuse National Hotline
1-800-4-A-CHILD (422-4453)
www.childabuse.com

Child Find of America
1-800-426-5678

Child Help USA National Child Abuse
Hotline
1-800-422-4453

National Runaway Switchboard
1-800-RUNAWAY
www.1800runaway.org/

National Society for Missing and Exploited
Children
1-800-THE-LOST (843-5678)
www.missingkids.com

Parents Anonymous Help Line
800-345-5044
[http://www.parentsanonymous.org/palIndex
10.html](http://www.parentsanonymous.org/palIndex10.html)

Runaway Line
800-621-4000
800-621-0394 (TDD)
<http://www.1800runaway.org/>

Eye Doctors

Eyecare Specialties
1104 E. Ohio Street
Clinton, MO
660-885-7116

Parks Optical
106 W. Jefferson Street
Clinton, MO 64735
660-885-2800

Wal-Mart Supercenter - Clinton
1712 E. Ohio Street
Clinton, MO 64735
660-885-5536

Sedalia Eye Associates
103 Cottonwood Street
Warsaw, MO 65355

Wal-Mart Supercenter – Warsaw
1712 E. Ohio Street
Clinton, MO 64735
660-885-5536

Dentists

Dr. Robert J. Sexauer, DDS
2000 Gaines Drive
Clinton, MO 64735
660-885-6933

Groff Dental Studio
1100 E. Ohio Street
Clinton, MO 64735
660-885-6911

Clinton Family Dentistry
1200 E. Ohio Street
Clinton, MO 64735
660-885-3632

University Park Orthodontics
702 E. Ohio Street
Clinton, MO 6735
660-885-6944

Bernard T Henehan, DDS
2000 Gaines Drive
Clinton, MO 64735
660-885-6991

Boulard Bruck & Housh
906 E. Ohio Street
Clinton, MO 64735
660-885-6114

John R. Bailey, DDS
2000 Gaines Drive
Clinton, MO 64735
660-885-3391

James Cowsert, DDS
211 S. Main Street
Clinton, MO 64735
660-885-2741

Dr. Merlin Eaton & Dr Patrick Lancaster
1631 Commercial Street
Warsaw, MO 65355
660-438-5139

James E. Spring, DDS
601 Commercial Street
Warsaw, MO 65355
660-438-7355

Stephanie Eaton
1631 Commercial Street
Warsaw, MO 65355
660-438-5139

Paul Griner, DDS
106 E. Colt Street
Windsor, MO 65360
660-647-3133

Disability Services

American Disability Group
877-790-8899

American Association of People with
Disabilities (AAPD)
www.aapd.com

American Council for the Blind
1-800-424-8666
www.acb.org

Americans with Disabilities Act Information
Hotline
1-800-514-0301
1-800-514-0383 (TTY)
www.ada.gov

National Center for Learning Disabilities
1-888-575-7373
www.ncld.org

National Library Services for Blind &
Physically Handicapped
www.loc.gov/nls/
1-800-424-8567

Environment

Environmental Protection Agency
1-800-223-0425
913-321-9516 (TTY)
www.epa.gov

Fitness Centers

Clinton Community Center
1004 E. Sedalia Avenue
660-885-2181

GVMH Wellness Center - Windsor
100 S. Tebo Street
Windsor, MO 65360
660-647-4000

Food and Drug

Center for Food Safety and Applied
Nutrition
1-888-SAFEFOOD (723-3366)
www.cfsan.fda.gov/
www.healthfinder.gov/

US Consumer Product Safety Commission
800-638-2772
800-638-8270 (TDD)
www.cpsc.gov

USDA Meat and Poultry Hotline
1-888-674-6854
1-800-256-7072 (TTY)
www.fsis.usda.gov/

U.S. Food and Drug Administration
1-888-INFO-FDA
1-888-463-6332
www.fsis.usda.gov/

Health Departments

Henry County Health Dept.
306 S. 2nd St.
Clinton, MO 64735
660-885-8193

Benton County Health Dept.
1238 Commercial Street Warsaw
660-438-2876

Home Health

GVMH Home Services
1617 N. Second
660-885-5088

Hospice

Twin Lakes Hospice - Clinton
725 E. Ohio St.
Clinton, MO 64735
660-890-2014

Twin Lakes Hospice - Warsaw
304 W. Main St.
Warsaw, MO 65355
660-438-9700

Legal Services

Missouri Attorney General's Office
Supreme Court Building
207 W. High St.
P.O. Box 899
Jefferson City, MO 65102
573-751-3321
Fax: 573-751-0774

Medicaid

U.S. Department of Health and Human
Services
Centers for Medicare and Medicaid
Services
800-MEDICARE (800-633-4227) or
877-486-2048 (TTY)
www.cms.hhs.gov

Medicare

Social Security Administration
1612 Imperial Drive
West Plains, MO 65775
1-866-614-2741
1-800-772-1213
TTY: 1-800-325-0778
Office Hours: Monday - Friday:
09:00 Am - 03:30 Pm

Mental Health Services

Compass Health Network
Pathways Community Health
1800 Community Drive
Clinton, MO 64735
1-844-863-8937

Compass Health Network
Royal Oaks Hospital
307 N. Main Street
Windsor, MO 65360
660-647-2182

Missouri Department of Mental Health
573-751-4122
1-800-364-9687
Fax: 573-751-8224

Mental Health America
1-800-969-6MHA (969-6642)

National Alliance for the Mentally Ill
Helpline
1-800-950-6264
703-516-7227 (TTY)
www.nami.org

National Institute of Mental Health
1-866-615-6464
1-866-415-8051 (TTY)
www.nimh.nih.gov

Suicide Prevention Hotline
1-800-SUICIDE [784-2433]
www.hopeline.com

National and State Agencies

Missouri Child Abuse Hotline
Toll-Free: 800-392-3738
Local: 573-751-3448

Missouri Coalition Against Domestic and
Sexual Violence
217 Oscar Dr., Suite A
Jefferson City, MO 65101
573-634-4161

National Domestic Violence Hotline
800-799-7233
www.ndvh.org
www.thehotline.org

National Sexual Assault Hotline
800-656-4673

Federal Bureau of Investigation
St. Louis Office
2222 Market Street
St. Louis, MO
314-231-4324

Federal Bureau of Investigation
866-483-5137

Missouri Road Conditions
MoDOT
Central Office
105 W. Capitol Avenue
Jefferson City, MO 65102
1-888 ASK MODOT
(1-888-275-6636)

Poison Control Center
800-222-1222
www.aapcc.org

Suicide Prevention Hotline
800-SUICIDE
800-442-HOPE
<http://hopeline.com>
800-273-TALK
www.suicidepreventionlifeline.com

Toxic Chemical and Oil Spills
800-424-8802

Alcohol and Drug Treatment Programs

A 1 A Detox Treatment
1-800-757-0771

Recovery Connection
1-800-993-3869

Able Detox-Rehab Treatment
1-800-577-2481 (NATIONAL)

Abuse Addiction Agency
1-800-861-1768
www.thewatershed.com

Al-Anon Family Group
1-888-4AL-ANON (425-2666)
www.al-anon.alateen.org
Alcohol and Drug Abuse Hotline
800-ALCOHOL

Alcohol and Drug Addiction Treatment
Programs
1-800-510-9435

Alcohol and Drug Helpline
1-800-821-4357

Alcoholism/Drug Addiction Treatment
Center
800-477-3447

Compass Health Network
Pathways Community Health
1800 Community Drive
Clinton, MO 64735
1-844-863-8937
Clinton Office Counselors:
Christina Bailey, CADC
Michael Gardner, Psychologist
Nancy Winn, CCDP
Terri Rager-White, LPC
Heather Richter, LPC
Julia Bozarth, CCDP-D
Dana Wyatt, CCDP
Sharon Tribble, CRADC
Amanda Quezada, RASCI

Ashley Parks, Psychologist
Melissa Edwards, CCDP-D
Emily Stocking, CRAADC
Emily Stocking, LPC
Robert Wissman, CRADC
Tanja Walton, LPN
Angel Clemens, CRADC
Michael Hazen, RASCI
Barbara Gray, Psychologist
Keith Jones, RASCI
Keith Jones, PLPC
Brandy Young, LCSW

Compass Health Network
Pathways Community Health
17571 N. Dam Access Rd.
Warsaw, MO 65355
660-428-1280
Warsaw Office Counselors:
Charlotte O'Dell, CRAADC
Kristin Yach, LPC
Isabelle Sands, LPC
Jeffrey Wall, CRADC
John Braucher, LCSW
Shannon Durham, LCSW
Cassandra Damlo, RASCI
Jonathan Rosenboom, Psychologist
Tracy Adams, LPC
Stephanie McLaughlin, RASCI
George Holmes, LMSW

Compass Health Network
Pathways Community Health
200 W. Florence
Windsor, MO 65360
888-403-1071

Compass Health Network
Royal Oaks Hospital
307 N. Main
Windsor, MO 65360
800-456-2634

Mothers Against Drunk Driving
1-800-GET-MADD (438-6233)
www.madd.org

National Council on Alcoholism and Drug
Dependence, Inc.
1-800-NCA-CALL (622-2255)
www.ncadd.org

National Health Services

AIDS / HIV Center for Disease Control and Prevention
800-CDC-INFO
888-232-6348 (TTY)
<http://www.cdc.gov/hiv/>

AIDS/STD National Hot Line
800-342-AIDS
800-227-8922 (STD line)

American Health Assistance Foundation
800-437-2423
www.ahaf.org

American Heart Association
800-242-8721
www.americanheart.org

American Lung Association
800-586-4872

American Stroke Association
1-888-4-STROKE
[www.american heart.org](http://www.americanheart.org)

Center for Disease Control and Prevention
800-CDC-INFO
888-232-6348 (TTY)
<http://www.cdc.gov/hiv/>

Elder Care Helpline
www.eldercarelink.com
Eye Care Council
800-960-EYES
www.seetolearn.com

National Health Information Center
800-336-4797
www.health.gov/nhic

National Cancer Information Center
800-227-2345
866-228-4327 (TTY)
www.cancer.org

National Institute on Deafness and Other Communication Disorders Information Clearinghouse
800-241-1044
800-241-1055 (TTY)
www.nidcd.nih.gov

Nutrition

American Dietetic Association
1-800-877-1600
www.eatright.org

American Dietetic Association Consumer Nutrition Hotline
800-366-1655

Missouri Coordinated School Health Coalition
P.O. Box 309
Columbia, MO 65205
info@healthykidsmo.org

WIC and Nutrition Services
573-751-6204
800-392-8209
Fax: 573-526-1470
info@health.mo.gov

Community Food and Nutrition Assistance
573-751-6269
800-733-6251
CACFP@health.mo.gov

Pharmacy

Summers Pharmacy
605 E. Pawnee Ave.
Clinton, MO
660-885-3034

CVS
1501 E. Ohio St.
Clinton, MO 64735
660-890-0707

Wal-mart - Clinton
1712 E. Ohit St.
Clinton, MO 64735
660-885-5536

Walgreen's
412 Pawnee Dr.
Clinton, MO 64735
660-885-4020

Merryfield Pharmacy
200 W. Benton St.
Windsor, MO 65360
660-647-2134

J&D Truecare Pharmacy
1330 Commercial
Warsaw, MO 65355
660-438-7331

Wal-Mart - Warsaw
103 W .Polk St.
Warsaw, MO 65355
660-438-2207

Boring's Rexall Drug
161 W. Main St.
Warsaw, MO 65355
660-438-7331

Rehab

GMMH Rehab & Wellness
1200 E. Ohio St.
Clinton, MO 64735
660-890-7190

SERC
109 W. Franklin
Clinton, MO 64735
660-383-1280

GVMH Rehab and Wellness - Warsaw
1771 Commerical St.
Warsaw, MO 65355
660-428-1146

GVMH Rehab and Wellness - Windsor
100 S. Tebo St.
Windsor, MO 65360
660-647-4000

Senior Services

Active Aging Resource Center
109 S. Main St.
Gallatin, MO 64640
660-663-2828

Missouri Veteran's Home
1111 Euclid
Cameron, MO 64429
816-632-6010

NWMO Area Agency on Aging
504 US Hwy. 136
Box 265
Albany, MO 64402
660-726-3800

Alzheimer's Association
1-800-487-2585

American Association of Retired Persons
1-888-OUR-AARP (687-2277)
www.aarp.org

Americans with Disabilities Act Information
Line
1-800-514-0301
1-800-514-0383 [TTY]
www.usdoj.gov/crt/ada

American Association of Retired Persons
888-687-2277
www.aarp.org

Eldercare Locator
1-800-677-1116
www.eldercare.gov/eldercare/public/home.asp

Federal Information Center
1-800-333-4636
www.FirstGov.gov

U.S. Department of Veterans Affairs
1-800-513-7731
www.kcva.org

Education (GI Bill)
1-888-442-4551

Health Resource Center
877-222-8387

Insurance Center
800-669-8477
Veteran Special Issue Help Line
Includes Gulf War / Agent Orange
Helpline
800-749-8387

U.S. Department of Veterans
Affairs Mammography Helpline
888-492-7844

Memorial Program Service [includes status
of headstones and markers]
800-697-6947

Telecommunications Device for the Deaf /
Hearing Impaired
800-829-4833 (TTY)
www.vba.va.gov

Welfare Fraud Hotline
800-432-3913

General Online Healthcare Resources

Doctors and Dentists--General

[AMA Physician Select: Online Doctor Finder](#) (American Medical Association) [DocFinder](#) (Administrators in Medicine) [Find a Dentist](#) (Academy of General Dentistry) [Find a Dentist: ADA Member Directory](#) (American Dental Association) [Physician Compare](#) (Centers for Medicare & Medicaid Services)

Hospitals and Clinics--General

[Find a Health Center](#) (Health Resources and Services Administration) [Find a Provider: TRICARE Provider Directories](#) (TRICARE Management Activity) [Hospital Quality Compare](#) (Centers for Medicare & Medicaid Services)

Doctors and Dentists--Specialists

[ACOG's Physician Directory](#) (American College of Obstetricians and Gynecologists) [ACR: Geographic Membership Directory](#) (American College of Rheumatology) [American College of Surgeons Membership Directory](#) (American College of Surgeons) [American Osteopathic Association D.O. Database](#) (American Osteopathic Association) [ASGE: Find a Doctor](#) (American Society for Gastrointestinal Endoscopy) [Cancer Genetics Services Directory](#) (National Cancer Institute) [Child and Adolescent Psychiatrist Finder](#) (American Academy of Child and Adolescent Psychiatry) [Dystonia: Find a Health Care Professional](#) (Dystonia Medical Research Foundation) [Expert Locator: Immunologists](#) (Jeffrey Modell Foundation) [Find a Dermatologic Surgeon](#) (American Society for Dermatologic Surgery) [Find a Dermatologist](#) (American Academy of Dermatology) [Find a Gastroenterologist](#) (American College of Gastroenterology) [Find a Gynecologic Oncologist](#) (Society of Gynecologic Oncologists) [Find a Hand Surgeon](#) (American Society for Surgery of the Hand) [Find a Hematologist](#) (American Society of Hematology) [Find a Neurologist](#) (American Academy of Neurology) [Find a Pediatric Dentist](#) (American Academy of Pediatric Dentistry) [Find a Pediatrician or Pediatric Specialist](#) (American Academy of Pediatrics) [Find a Periodontist](#) (American Academy of Periodontology) [Find a Physical Medicine & Rehabilitation Physician](#) (American Academy of Physical Medicine and Rehabilitation) [Find a Plastic Surgeon](#) (American Society of Plastic Surgeons) [Find a Podiatrist](#) (American Podiatric Medical Association) [Find a Thyroid Specialist](#) (American Thyroid Association) [Find a Urologist](#) (American Urological Association) [Find an ACFAS Physician](#) (American College of Foot and Ankle Surgeons) [Find an Allergist/Immunologist: Search](#) (American Academy of Allergy, Asthma, and Immunology) [Find an Endocrinologist](#) (Hormone Health Network) [Find an Eye M.D.](#) (American Academy of Ophthalmology) [Find an Interventional Radiologist](#) (Society of Interventional Radiology) [Find an Oncologist](#) (American Society of Clinical Oncology) [Find an Oral and Maxillofacial Surgeon](#) (American Association of Oral and Maxillofacial Surgeons) [Find an Orthopaedic Foot and Ankle MD](#) (American Orthopaedic Foot and Ankle Society) [Find an Otolaryngologist \(ENT\)](#) (American Academy of Otolaryngology--Head and Neck Surgery) [Finding an Eye Care Professional](#) (National Eye Institute) [GI Locator Service](#) (American Gastroenterological Association)

Other Healthcare Providers

[AMTA's Find a Massage Therapist](#) (American Massage Therapy Association) [Cancer Genetics Services Directory](#) (National Cancer Institute) [Find a Diabetes Educator](#) (American Association of Diabetes Educators) [Find a Genetic Counselor](#) (National Society of Genetic Counselors) [Find a Midwife](#) (American College of Nurse-Midwives) [Find a Nurse Practitioner](#) (American Academy of Nurse Practitioners) [Find a Physical Therapist](#) (American Physical Therapy Association) [Find a Professional: Online Directory of Audiology and Speech-Language Pathology Programs](#) (American Speech-Language-Hearing Association) [Find a Registered Dietitian](#) (Academy of Nutrition and Dietetics) [Find a Therapist](#) (Anxiety Disorders Association of America) [Find an Audiologist](#) (American Academy of Audiology) [Manual Lymphatic Drainage Therapists](#) (National Lymphedema Network) [National Register of Health Service Providers in Psychology](#) (National Register of Health Service Providers in Psychology) [NCCAOM: Find Nationally Certified Practitioners](#) (National Certification Commission for Acupuncture and Oriental Medicine) [Search for an Emergency Contraception Provider in the United States](#) (Princeton University, Office of Population Research)

Hospitals and Clinics--Specialized

[Accredited Birth Centers](#) (Commission for the Accreditation of Birth Centers) [Alzheimer's Disease Research Centers](#) (National Institute on Aging) [Cystic Fibrosis Foundation: Find a Chapter](#) (Cystic Fibrosis Foundation) [Cystic Fibrosis Foundation: Find an Accredited Care Center](#) (Cystic Fibrosis Foundation) [Dialysis Facility Compare](#) (Centers for Medicare & Medicaid Services) [FDA Certified Mammography Facilities](#) (Food and Drug Administration) [Find a Free Clinic](#) (National Association of Free Clinics) [Find an Indian Health Service Facility](#) (Indian Health Service) [Find Treatment Centers](#) (American Cancer Society) [Genetics Clinic Directory Search](#) (University of Washington) [Locate a Sleep Center in the United States by Zip Code](#) (American Academy of Sleep Medicine) [MDA ALS Centers](#) (Muscular Dystrophy Association) [Mental Health Services Locator](#) (Substance Abuse and Mental Health Services Administration) [NCI Designated Cancer Centers](#) (National Cancer Institute) [Neurofibromatosis Specialists](#) (Children's Tumor Foundation) [Post-Polio Directory 2011: Post-Polio Clinics, Health Professionals, Support Groups](#) (Post-Polio Health International including International Ventilator Users Network) [Spina Bifida Clinic Directory](#) (Spina Bifida Association of America) [Substance Abuse Treatment Facility Locator](#) (Substance Abuse and Mental Health Services Administration) [Transplant Center Search Form](#) (BMT InfoNet) [U.S. NMDP Transplant Centers](#) (National Marrow Donor Program) [VA Health Care Facilities Locator & Directory](#) (Veterans Health Administration) [Where to Donate Blood](#) (AABB) [Where to Donate Cord Blood](#) (National Marrow Donor Program)

Other Healthcare Facilities and Services

[Alzheimer's Disease Resource Locator](#) (Fisher Center for Alzheimer's Research Foundation) [American College of Radiology Accredited Facility Search](#) (American College of Radiology) [APA District Branch / State Association Directory](#) (American Psychiatric Association) [Directory of Organizations \(Deafness and Communication Disorders\)](#) (National Institute on Deafness and Other Communication Disorders) [Dog Guide Schools in the United States](#) (American Foundation for the Blind) [Eldercare Locator](#) (Dept. of Health and Human Services) [Find a Hospice or Palliative Care Program](#) (National Hospice and Palliative Care Organization) [Find Services \(for People with Vision Loss\)](#) (American Foundation for the Blind) [Find Urgent Care Centers by State](#) (Urgent Care Association of America) [Genetic Testing Laboratory Directory](#) (University of Washington) [Home Health Compare](#) (Centers for Medicare & Medicaid Services) [Medicare: Helpful Contacts](#) (Centers for Medicare & Medicaid Services) [Muscular Dystrophy Association Clinics and Services](#) (Muscular Dystrophy Association) [National Foster Care and Adoption Directory Search](#) (Children's Bureau) [Nursing Home Compare](#) (Centers for Medicare & Medicaid Services) [Organizations That Offer Support Services](#) (National Cancer Institute) [Poison Control Centers](#) (American Association of Poison Control Centers) [Resources and Information for Parents about Braille](#) (American Foundation for the Blind) [State-Based Physical Activity Program Directory](#) (Centers for Disease Control and Prevention) [TSA Chapters in the USA](#) (Tourette Syndrome Association) [Violence against Women: Resources by State](#) (Dept. of Health and Human Services, Office on Women's Health) [Where to Find Hair Loss Accessories and Breast Cancer Products](#) (American Cancer Society)

SOURCE: MedlinePlus provides links to directories to help you find libraries, health professionals, services and facilities. National Library of Medicine (NLM) does not endorse or recommend the organizations that produce these directories, nor the individuals or organizations that are included in the directories.

V. Detail Exhibits

[VVV Consultants LLC]

Patient Origin and Access

[VVV Consultants LLC]

V. Detail Exhibits

a) Patient Origin and Access to Care



Patient Origin by Region - Inpatient
 Henry, MO Residents Treated in HIDI Reporting Area
 Federal Fiscal Year: 2013
 Kansas Discharge Data Available From 2011 Q 1 through 2016 Q 3

Hospital	Total Discharges		Pediatric		Adult Medical/Surgical								Psychiatric		Obstetric		Newborn		Surg %
	Cases	%	Cases	%	Age 0 - 17	Age 18 - 44	Age 45 - 64	Age 65 - 74	Age 75+	Cases	%	Cases	%	Cases	%	Cases	%		
Golden Valley Memorial Healthcare - Clinton, MO	1,890	41.3%	19	1.1%	217	12.8%	345	20.4%	240	14.2%	475	26.1%	14	0.8%	199	11.8%	181	10.7%	23.1%
Saint Luke's Hospital of Kansas City - Kansas City, MO	478	11.9%	1	0.2%	51	10.7%	128	26.8%	109	22.8%	173	36.2%	2	0.4%	8	1.7%	6	1.3%	38.7%
Research Medical Center - Kansas City, MO	269	6.7%	4	1.5%	40	14.9%	97	36.1%	57	21.2%	64	23.8%	5	1.9%	1	0.4%	1	0.4%	34.6%
St. Joseph Medical Center - Kansas City, MO	199	4.9%	0		9	4.5%	61	30.7%	56	28.1%	67	33.7%	1	0.5%	3	1.5%	2	1.0%	45.7%
University of Missouri Health Care - Columbia, MO	119	3.0%	3	2.5%	45	37.8%	45	37.8%	11	9.2%	13	10.8%	2	1.7%	0		0		49.6%
Cass Regional Medical Center - Harrisonville, MO	93	2.3%	2	2.2%	9	9.7%	16	17.2%	28	30.1%	21	22.6%	17	18.3%	0		0		22.6%
Bothwell Regional Health Center - Sedalia, MO	92	2.3%	2	2.2%	7	7.6%	24	26.1%	9	9.8%	31	33.7%	3	3.3%	8	8.7%	8	8.7%	25.0%
Children's Mercy Kansas City - Kansas City, MO	92	2.3%	89	96.7%	1	1.1%	0		0		0		0		1	1.1%	1	1.1%	19.6%
Saint Luke's East Hospital - Lees Summit, MO	89	2.2%	0		6	6.7%	28	31.5%	12	13.5%	31	34.8%	1	1.1%	6	6.7%	5	5.6%	28.1%
The University of Kansas Hospital - Kansas City, KS	82	2.0%	2	2.4%	18	22.0%	18	22.0%	29	35.4%	15	18.3%	0		0		0		42.7%
Royal Oaks Hospital - Windsor, MO	78	1.9%	0		0		0		0		78	100.0%	0		0		0		
Western Missouri Medical Center - Warrensburg, MO	59	1.5%	0		2	3.4%	11	18.6%	11	18.6%	7	11.9%	1	1.7%	13	22.0%	14	23.7%	25.4%
Saint Luke's South - Overland Park, KS	49	1.2%	0		2	4.1%	12	24.5%	16	32.7%	11	22.4%	0		4	8.2%	4	8.2%	42.9%
Belton Regional Medical Center - Belton, MO	48	1.2%	0		2	4.2%	12	25.0%	15	31.2%	19	39.6%	0		0		0		79.2%
Centrapoint Medical Center - Independence, MO	47	1.2%	1	2.1%	11	23.4%	14	29.8%	12	25.5%	3	6.4%	0		4	8.5%	2	4.3%	48.9%
Nevada Regional Medical Center - Nevada, MO	45	1.1%	0		0		1	2.2%	0		0		44	97.8%	0		0		
Two Rivers Behavioral Health System - Kansas City, MO	37	0.9%	0		0		0		0		37	100.0%	0		0		0		
Menorah Medical Center - Overland Park, KS	35	0.9%	0		3	8.6%	8	22.9%	5	14.3%	17	48.6%	0		1	2.9%	1	2.9%	60.0%
Mercy Hospital Springfield - Springfield, MO	33	0.8%	0		3	9.1%	14	42.4%	4	12.1%	12	36.4%	0		0		0		48.5%



Patient Origin by Region - Inpatient
 Henry, MO Residents Treated in HIDI Reporting Area
 Federal Fiscal Year: 2014
 Kansas Discharge Data Available From 2011 Q 1 through 2016 Q 3

Hospital	Total Discharges		Pediatric Age 0 - 17		Adult Medical/Surgical								Psychiatric		Obstetric		Newborn		Surg %
	Cases	%	Cases	%	Age 18 - 44	Age 45 - 64	Age 65 - 74	Age 75+	Cases	%	Cases	%	Cases	%	Cases	%	Cases	%	
Golden Valley Memorial Healthcare - Clinton, MO	1,595	42.0%	19	1.2%	177	11.1%	371	23.3%	236	14.8%	397	24.9%	11	0.7%	197	12.4%	187	11.7%	25.1%
Saint Luke's Hospital of Kansas City - Kansas City, MO	426	11.2%	0		44	10.3%	122	28.6%	110	25.8%	124	29.1%	2	0.5%	13	3.1%	11	2.8%	42.5%
Research Medical Center - Kansas City, MO	286	7.5%	1	0.3%	33	11.5%	102	35.7%	78	27.3%	42	14.7%	25	8.7%	3	1.0%	2	0.7%	32.5%
St. Joseph Medical Center - Kansas City, MO	193	5.1%	0		22	11.4%	75	38.9%	58	30.1%	33	17.1%	1	0.5%	2	1.0%	2	1.0%	39.9%
Saint Luke's East Hospital - Lees Summit, MO	111	2.9%	0		9	8.1%	31	27.9%	22	19.8%	25	22.5%	0		12	10.8%	12	10.8%	22.5%
University of Missouri Health Care - Columbia, MO	103	2.7%	3	2.9%	26	25.2%	31	30.1%	15	14.6%	14	13.6%	5	4.9%	4	3.9%	5	4.9%	52.4%
The University of Kansas Hospital - Kansas City, KS	96	2.5%	2	2.1%	24	25.0%	24	25.0%	29	30.2%	17	17.7%	0		0		0		45.8%
Royal Oaks Hospital - Windsor, MO	94	2.5%	0		0		0		0		0		94	100.0%	0		0		
Cass Regional Medical Center - Harrisonville, MO	73	1.9%	1	1.4%	8	11.0%	22	30.1%	15	20.5%	23	31.5%	4	5.5%	0		0		15.1%
Bothwell Regional Health Center - Sedalia, MO	71	1.9%	0		3	4.2%	14	19.7%	21	29.6%	19	26.8%	0		7	9.9%	7	9.9%	28.2%
Children's Mercy Kansas City - Kansas City, MO	71	1.9%	68	95.8%	1	1.4%	0		0		0		0		1	1.4%	1	1.4%	15.5%
Centerpoint Medical Center - Independence, MO	52	1.4%	0		5	9.6%	18	34.6%	10	19.2%	9	17.3%	0		5	9.6%	5	9.6%	44.2%
Western Missouri Medical Center - Warrensburg, MO	44	1.2%	0		4	9.1%	14	31.8%	9	20.5%	5	11.4%	0		5	11.4%	7	15.9%	22.7%
Nevada Regional Medical Center - Nevada, MO	43	1.1%	0		0		0		0		0		37	86.0%	3	7.0%	3	7.0%	
Mercy Hospital Springfield - Springfield, MO	36	0.9%	0		6	16.7%	11	30.6%	3	8.3%	14	38.9%	2	5.6%	0		0		44.4%
Saint Luke's South - Overland Park, KS	32	0.8%	0		3	9.4%	12	37.5%	6	18.8%	11	34.4%	0		0		0		37.5%
Two Rivers Behavioral Health System - Kansas City, MO	32	0.8%	0		0		0		0		0		32	100.0%	0		0		
Belton Regional Medical Center - Belton, MO	31	0.8%	0		8	25.8%	11	35.5%	7	22.6%	5	16.1%	0		0		0		58.1%
Boone Hospital Center - Columbia, MO	27	0.7%	0		1	3.7%	9	33.3%	6	22.2%	3	11.1%	0		4	14.8%	4	14.8%	55.6%



Patient Origin by Region - Inpatient
 Henry, MO Residents Treated in HIDI Reporting Area
 Federal Fiscal Year: 2015
 Kansas Discharge Data Available From 2011 Q 1 through 2016 Q 3

Hospital	Total Discharges		Pediatric Age 0 - 17		Age 18 - 44		Adult Medical/Surgical				Psychiatric		Obstetric		Newborn		Surg %		
	Cases	%	Cases	%	Cases	%	Cases	%	Cases	%	Cases	%	Cases	%	Cases	%			
Golden Valley Memorial Healthcare - Clinton, MO	1,488	41.4%	13	0.9%	142	9.5%	315	21.2%	232	15.6%	412	27.7%	23	1.5%	187	12.6%	164	11.0%	20.4%
Saint Luke's Hospital of Kansas City - Kansas City, MO	360	10.0%	0		32	8.9%	116	32.2%	96	26.7%	93	25.8%	5	1.4%	13	3.6%	5	1.4%	45.3%
Research Medical Center - Kansas City, MO	282	7.8%	0		26	9.2%	99	35.1%	71	25.2%	54	19.1%	30	10.6%	2	0.7%	0		30.5%
St. Joseph Medical Center - Kansas City, MO	187	5.2%	0		13	7.0%	69	36.9%	44	23.5%	56	29.9%	0		3	1.6%	2	1.1%	38.0%
Saint Luke's East Hospital - Lees Summit, MO	143	4.0%	1	0.7%	7	4.9%	23	16.1%	37	25.9%	51	35.7%	0		13	9.1%	11	7.7%	25.9%
Western Missouri Medical Center - Warrensburg, MO	113	3.1%	1	0.9%	6	5.3%	20	17.7%	12	10.6%	14	12.4%	3	2.7%	28	24.8%	29	25.7%	26.5%
The University of Kansas Hospital - Kansas City, KS	109	3.0%	4	3.7%	22	20.2%	40	36.7%	31	28.4%	8	7.3%	2	1.8%	1	0.9%	1	0.9%	43.1%
Royal Oaks Hospital - Windsor, MO	81	2.3%	0		0		0		0		0		81	100.0%	0		0		
Bothwell Regional Health Center - Sedalia, MO	76	2.1%	1	1.3%	5	6.6%	15	19.7%	16	21.1%	31	40.8%	0		4	5.3%	4	5.3%	23.7%
Cass Regional Medical Center - Harrisonville, MO	65	1.8%	0		3	4.6%	18	27.7%	18	27.7%	12	18.5%	14	21.5%	0		0		16.9%
University of Missouri Health Care - Columbia, MO	64	1.8%	1	1.6%	24	37.5%	20	31.2%	8	12.5%	4	6.2%	4	6.2%	2	3.1%	1	1.6%	56.2%
Children's Mercy Kansas City - Kansas City, MO	56	1.6%	51	91.1%	3	5.4%	0		0		0		0		1	1.8%	1	1.8%	25.0%
Centerpoint Medical Center - Independence, MO	50	1.4%	0		14	28.0%	16	32.0%	11	22.0%	7	14.0%	0		1	2.0%	1	2.0%	52.0%
Saint Luke's South - Overland Park, KS	46	1.3%	0		2	4.3%	12	26.1%	13	28.3%	17	37.0%	0		1	2.2%	1	2.2%	52.2%
Belton Regional Medical Center - Belton, MO	40	1.1%	0		6	15.0%	15	37.5%	12	30.0%	7	17.5%	0		0		0		72.5%
Saint Luke's North Hospital - Smithville - Smithville, MO	37	1.0%	0		0		0		0		0		37	100.0%	0		0		
North Kansas City Hospital - North Kansas City, MO	37	1.0%	0		1	2.7%	11	29.7%	12	32.4%	11	29.7%	0		1	2.7%	1	2.7%	51.4%
Menorah Medical Center - Overland Park, KS	31	0.9%	0		3	9.7%	15	48.4%	5	16.1%	6	19.4%	0		1	3.2%	1	3.2%	48.4%
Lee's Summit Medical Center - Lees	27	0.8%	0		6	22.2%	8	29.6%	4	14.8%	9	33.3%	0		0		0		66.7%

Town Hall Attendees Notes and Feedback

[VVV Consultants LLC]

Golden Valley Memorial Healthcare (Primary Service Area) - CHNA Round #2 Town Hall Attendees N=35

IRS Category	Last Name	First Name	Organization	Address	City	ST	Zip
Leaders in other not-for-profit health care organizations, such as hospitals, clinics, nursing homes and home-based and community-based services.	Adkins	Kyle	Golden Valley Memorial Healthcare	1602 N. 2nd	Clinton	MO	64735
Leaders in other not-for-profit health care organizations, such as hospitals, clinics, nursing homes and home-based and community-based services.	Allee	Erin	Royal Oaks Hospital	307 N. Main	Windsor	MO	65360
Leaders in other not-for-profit health care organizations, such as hospitals, clinics, nursing homes and home-based and community-based services.	Ashworth	Stephanie	Golden Valley Memorial Healthcare	329 N.E. 51 Rd.	Clinton	MO	64735
Leaders in other not-for-profit health care organizations, such as hospitals, clinics, nursing homes and home-based and community-based services.	Bair	Jon	Royal Oaks Hospital	307 N. Main	Windsor	MO	65360
Leaders in other not-for-profit health care organizations, such as hospitals, clinics, nursing homes and home-based and community-based services.	Barton	Sarah	Royal Oaks Hospital	307 N. Main	Windsor	MO	65360
Leaders in other not-for-profit health care organizations, such as hospitals, clinics, nursing homes and home-based and community-based services.	Best	Lynn	Golden Valley Memorial Healthcare	201 N. East St., P.O. Box 143	Calhoun	MO	65323
Community leaders.	Boyles	Rachel					
Leaders in other not-for-profit health care organizations, such as hospitals, clinics, nursing homes and home-based and community-based services.	Braucher	John	Pathways Community Health	1800 Community Drive	Clinton	MO	
Leaders in other not-for-profit health care organizations, such as hospitals, clinics, nursing homes and home-based and community-based services.	Cloud	Rebecca	Golden Valley Memorial Healthcare				
Presidents or chairs of civic or service clubs-chamber of commerce, veterans organizations, Lions, Rotary, etc.	Combs	Brad	Clinton Parks and Rec	1004 E. Sedalia	Clinton	MO	64735
Leaders in other not-for-profit health care organizations, such as hospitals, clinics, nursing homes and home-based and community-based services.	Dailey	William	Golden Valley Memorial Healthcare	100 S. Tebo	Windsor	MO	65360
Presidents or chairs of civic or service clubs-chamber of commerce, veterans organizations, Lions, Rotary, etc.	Drury	Ann	Clinton Parks and Rec	1004 E. Seddia	Clinton	MO	64735
Leaders in other not-for-profit health care organizations, such as hospitals, clinics, nursing homes and home-based and community-based services.	Facklam	Savanna	Golden Valley Memorial Healthcare	1608 N. 2nd St.	Clinton	MO	64735
Leaders in other not-for-profit health care organizations, such as hospitals, clinics, nursing homes and home-based and community-based services.	Goodbrake	Jessie	Golden Valley Memorial Healthcare				
Leaders in other not-for-profit health care organizations, such as hospitals, clinics, nursing homes and home-based and community-based services.	Gunter	Marilyn	Care Connection for Aging Services	106 W. Young	Warrensburg	Mo	
Leaders in other not-for-profit health care organizations, such as hospitals, clinics, nursing homes and home-based and community-based services.	Hayes	Lynnette	Golden Valley Memorial Healthcare				
Leaders in other not-for-profit health care organizations, such as hospitals, clinics, nursing homes and home-based and community-based services.	Hendrich	Deanna	Golden Valley Memorial Healthcare	1600 N. Second			
Presidents or chairs of civic or service clubs - Chamber of Commerce, veterans' organizations, Lions, Rotary, etc.	Huff	Allen	Clinton Area Chamber of Commerce	200 S. Main	Clinton	MO	64735
Leaders in other not-for-profit health care organizations, such as hospitals, clinics, nursing homes and home-based and community-based services.	Huff	Jennifer	Golden Valley Memorial Healthcare	200 W. Sedalia	Clinton	MO	64735
Leaders in other not-for-profit health care organizations, such as hospitals, clinics, nursing homes and home-based and community-based services.	Hull	Tami	Golden Valley Memorial Healthcare	1600 N. 2nd	Clinton	MO	
Education officials and staff - school superintendents, principals, teachers and school nurses.	Hutton Gann	Rhonda	State Fair Community College	3201 W. 16th St.	Sedalia	MO	65301
Leaders in other not-for-profit health care organizations, such as hospitals, clinics, nursing homes and home-based and community-based services.	Lanning	Ken	Golden Valley Memorial Healthcare				
Leaders in other not-for-profit health care organizations, such as hospitals, clinics, nursing homes and home-based and community-based services.	Lasswell	Kelly	Golden Valley Memorial Healthcare	1600 N. 2nd St.	Clinton	MO	64735
Leaders in other not-for-profit health care organizations, such as hospitals, clinics, nursing homes and home-based and community-based services.	Miller	Gloria	Compass Health Network	1800 Community			
Health insurers.	Mills	Parker	Fortress Insurance	1114 E. Ohio St.	Clinton	MO	64735
Leaders in other not-for-profit health care organizations, such as hospitals, clinics, nursing homes and home-based and community-based services.	Nadler	Tammy	Golden Valley Memorial Healthcare				
Education officials and staff - school superintendents, principals, teachers and school nurses.	Ninemine	Vince	State Fair Community College	1701 N. 2nd	Clinton	MO	64735
Law enforcement agencies - Chiefs of police.	Oberkrom	Kent	Henry County	220 S. Washington	Clinton	MO	64735
Leaders in other not-for-profit health care organizations, such as hospitals, clinics, nursing homes and home-based and community-based services.	Overton	Saundra	Royal Oaks Hospital	307 N. Main	Windsor	MO	65360
Leaders in other not-for-profit health care organizations, such as hospitals, clinics, nursing homes and home-based and community-based services.	Shannon	Greg	Golden Valley Memorial Healthcare	1600 N. 2nd St.	Clinton	MO	64735
Leaders in other not-for-profit health care organizations, such as hospitals, clinics, nursing homes and home-based and community-based services.	Shoemaker	Michael	Compass Health Network	885 Dallas Pl.	Osceola	MO	64776
Leaders in other not-for-profit health care organizations, such as hospitals, clinics, nursing homes and home-based and community-based services.	Thompson	Craig	Golden Valley Memorial Healthcare				
Education officials and staff - school superintendents, principals, teachers and school nurses.	Willard	Adam	Clinton School District	701 S. 8th St.	Clinton	MO	64735
Leaders in other not-for-profit health care organizations, such as hospitals, clinics, nursing homes and home-based and community-based services.	Wertz	Randy	Golden Valley Memorial Healthcare				
Education officials and staff - school superintendents, principals, teachers and school nurses.	Woirhaye	Tammy	State Fair Community College	1701 N. 2nd St.	Clinton	MO	64735

V. Detail Exhibits

b) Town Hall Attendees, Notes and Feedback

Golden Valley Memorial Hospital (Primary Service Area) - Community Health Needs Assessment Meeting

11.1.16

N=35

Community Members Present

- Compass
- HCHC
- Parents
- City
- County
- Law Enforcement
- Providers (Doctors, Nurses, PA / NP's, PT, etc.)
- Benton County residents

TAB 1: Demographic Profile

- Veterans are going to the VA in Sedalia or clinic in Warrensburg

TAB 3: Economic Profile

- Unemployment seems about right
- Low income and low access to stores seems like it should be swapped with Benton County

TAB 3: Educational Profile

- School lunches must meet certain requirements so they are healthy
- 41% eating free lunch is way too low, seems more like 60%
- Children K-8 in Clinton seem to be eating the lunches
- School representative in attendance has school screenings data

TAB 4: Maternal and Infant Profile

- WIC is full
- Transportation is hindering at times

Tab 5: Hospitalization / Provider Profile

- Don't have a lot of ER traffic coming into GVMH from Benton County

TAB 6: Behavioral Health Profile

- Drugs are an issue here: Meth, Heroin, Marijuana, Prescription
- Alcohol is an issue as well

STRENGTHS:

- Depth of services at GVMH
- Smoke-free community
- Access to exercise / recreation
- Increased local health partnerships (Royal Oaks, GVMH, Pathways, HCHC)
- Access to higher education
- First responders
- Quality Primary Care
- Quality Home Health services
- Free access to community wellness facility
- FQHC services
- Caring community not turning patients down
- Proactive law enforcement
- Youth sports opportunities
- Low cost of living
- Strong schools in Clinton with curriculum for living healthy lifestyles
- Visiting specialists
- Good economy
- Several Mental Health providers

WEAKNESSES:

- Economic development
- Drug abuse (meth, heroin, marijuana, prescription)
- Emergency department
- Obesity (nutrition and fitness)
- Healthcare transportation
- Awareness of mental health and specialty services
- Urgent care services
- Services for autistic children and adults
- Homeless shelter
- Access to dental services for low-income and Medicaid
- Cancer care
- Visiting specialists (Derm, Pulm, Podiatry, Pediatric Psych, Surg)
- Domestic violence shelter
- Bullying
- Family support
- Tobacco

Community Health Needs Assessment

Golden Valley Memorial Healthcare PSA - Strengths (Color Cards) N=35

#	Today: What are the strengths of our community that contribute to health?	#	Today: What are the strengths of our community that contribute to health?
1	Lake	76	Access to hospital care
2	State park / Katy Trail	77	Low cost of living
3	Locally sourced agriculture products	78	Specialist availability
4	We have active retail factions	79	Good volume of family physicians
5	Diverse community	80	Added several specialty providers in last 3-5 years
6	Tourism	81	Hospital
7	Hospital	82	Access to care
8	Healthcare	83	Quality
9	Totaling jobs	84	Access to care
10	Lots of resources in Clinton	85	Quality of care
11	A growing continuum of care in communities	86	Hospital
12	Outpatient medical and behavioral health services	87	Good number of providers
13	FQHC to meet needs of uninsured and underinsured	88	Low cost of living
14	FQHC providing dental services to Medicaid	89	Close to nature
15	FQHC providing collaborative medical / psych / MAT for substance use	90	Access to care (primary care, WIC, availability of services)
16	Medical infrastructure	91	Smoking ban
17	Medical staff - other providers	92	Primary care access with focus on population health for diabetics, colonoscopy / mammography screenings
18	The access to health care in Clinton	93	Ban on smoking inside public establishments
19	Have a great collaboration in the community for the overall health of the community	94	Non-profit support resources for unplanned pregnancy and tutoring
20	Access to resources	95	Outpatient services - care (variety)
21	Jobs / have good economy	96	Access to medical care
22	Good health care	97	Access to primary care and medical care (variety of services)
23	Infrastructure	98	Home health services
24	Geography	99	Smoking ban
25	Availability of health care	100	PFAC
26	Charitable resources	101	Community common focus for improvement and charitable mentality
27	Collaborating among healthcare	102	Location
28	Amount of charity work provided	103	Support services for unplanned pregnancies
29	Access to care is available	104	Tutoring program for students
30	Charitable resources	105	PFAC (patient family advisory council)
31	Accessible locations of providers	106	Physician manpower development (adding of specialties) - peds, derm, urology
32	Health partnerships - coordinating efforts	107	Collaboration w/ community
33	Volume of mental health services	108	Common purpose to improve the community
34	Community pride	109	Good will, giving, charitable mentality
35	Facilities new and improving	110	Location
36	Charitable care	111	FQHC services - dental
37	Mental health services (inpatient and outpatient)	112	No smoking in indoor facilities
38	Health screens conducted in schools, primarily from HCH	113	Extended clinic hours
39	Charitable care	114	Community center
40	Well established quality health care system	115	Trails / outdoor activities

Community Health Needs Assessment

Golden Valley Memorial Healthcare PSA - Strengths (Color Cards) N=35

#	Today: What are the strengths of our community that contribute to health?	#	Today: What are the strengths of our community that contribute to health?
41	Network of support systems for economically disadvantaged and partnerships - public and private	116	Access to health care services
42	Progressive healthcare	117	Primary care access with focus on population health for diabetics, colonoscopy / mammography screenings
43	Good physicians - qualified	118	Access to recreation / exercise facility
44	We are heading to going with mental / behavioral health - stems from drug addiction	119	Collaborative medical community
45	We have increased the number of health care providers	120	Youth sport opportunity
46	Available healthcare and variety after hours access, although limited	121	Diversity of our specialty physicians
47	Henry County Health Center and Pathways and Compass dental all in same location	122	Support of hospital by community
48	Proactive law enforcement	123	Great emergency response of public services
49	Expansion of hospital specialty (cardiology, nephrology, ortho, OTC cancer treatment)	124	Hospital - access and services
50	Improving schools - great health screenings	125	Access for physical fitness - Katy Trail, community center, lakes
51	Quick access to emergency services	126	Better collaboration
52	SFCC TREC in Clinton - meeting educational needs	127	Low cost of living
53	Access to medical facilities	128	Higher education
54	Clinic wait times - less	129	High charity care
55	Family and individual access to support services	130	Smoke free city
56	Strong educational opportunities - votech, college	131	Aquatic center / complex
57	Access to healthcare	132	Community is smoke free
58	Close to nature	133	Free access to community wellness facility
59	Primary care	134	Outdoor activity access
60	Hospital	135	Access to local healthcare services (broad range)
61	Access to physicians / number of providers	136	Key school partnerships (immunizations, dentistry, secondary education) and strong curriculum for healthy lifestyles
62	Access to outdoor recreational activities - free	137	Secondary education access locally (tech school)
63	Our hospital	138	Primary care
64	School district and parochial schools	139	Access to care
65	Community center	140	Quality care
66	Katy Trail	141	Specialist recruitment
67	Truman lake	142	Hospital (OP) expansion (OP services)
68	School district stadium facility	143	Pediatric immunizations
69	Access to medical care	144	Overall healthcare
70	Primary care	145	Education opportunities with State Fair CC in town
71	Diversity of specialties	146	Free community
72	Access to recreation and exercise	147	Smoke free
73	Emergency response and collaboration	148	Access to quality healthcare
74	Youth sport opportunities	149	Community smoke ordinance
75	Collaborative medical community		

Community Health Needs Assessment

Golden Valley Memorial Healthcare PSA - Weakness (Color Cards) N=35

#	Today: What are the weaknesses of our community that contribute to health?	#	Today: What are the weaknesses of our community that contribute to health?
1	Affordability is the problem	79	Obesity
2	Better communication for coordination of care	80	Drugs
3	Decrease smoking	81	Employment opportunities
4	Increase exercise	82	Cancer screening
5	Increase food IQ	83	Obesity (eating right and fitness)
6	Increase health literacy	84	Tobacco use
7	Need for Plan for Aging	85	ER wait times
8	Education in schools and for families about mental health, substance abuse and prevention services	86	Lack of mammograms
9	Inpatient psychiatric beds	87	Mental health services
10	St. Clair County just lost a small community hospital - impact on needs	88	Access to some specialty services
11	Public transportation	89	Nutrition education
12	Employment	90	Drug abuse
13	No shelter for domestic violence or homeless	91	Preventable hospitalizations
14	Several homeless teens	92	Increase physical activity
15	Specialty services - dermatology	93	Decrease obesity
16	No public transportation	94	Availability of dental services for uninsured / underinsured
17	No domestic violence or homeless shelter	95	Mental health / behavioral health awareness / services
18	Increased homeless focus	96	Inform community of services we provide
19	Elderly raising grandchildren	97	Provide wellness program / education to combat obesity issues
20	Education in schools for families about mental health, substance abuse and prevention services	98	Hospice / palliative
21	Decrease drug abuse	99	Drug issues
22	Decrease obesity	100	Access to mental healthcare
23	Decrease smoking	101	Poverty
24	Mental health delivery	102	Availability of appointments with Primary Care providers
25	Domestic violence	103	Urgent care services
26	Obesity	104	More collaboration - include University (SFCC, UCM) involvement
27	Less stigma towards mental health	105	Joint ventures
28	Drug abuse, easy access to meth	106	More industry; more trade school training for skills, not everyone is college material
29	Child abuse / sexual abuse	107	Reduce obesity
30	Cancer screenings and treatment	108	Address drug abuse - especially in schools
31	Smoking cessation throughout Henry County	109	Reduce poverty - work with schools to help educate kids on career opportunities
32	Providing public service announcements about available mental health services. There are multiple resources and community is continuing to report limited access	110	Reduce smoking
33	Dental services are hard to find for all socioeconomic levels	111	Drugs

Community Health Needs Assessment

Golden Valley Memorial Healthcare PSA - Weakness (Color Cards) N=35

#	Today: What are the weaknesses of our community that contribute to health?	#	Today: What are the weaknesses of our community that contribute to health?
34	Mental health - breaking the stereotype that prevents some from reaching out	112	Employment opportunities
35	Bully prevention	113	Obesity rate
36	Teen drinking	114	Drug use
37	Drug use - meth	115	Tobacco use
38	Suicide prevention / prevention of attempts	116	ED wait times, courtesy of staff and updating patient during visit
39	Increased psychiatry services	117	Lack of mammograms
40	Cancer screening at younger ages than insurance stipulates	118	Mental health access, beds
41	Affordable medical care	119	ER services
42	Youth activities and resources	120	Access to some specialty services
43	Communicate mental health resources	121	ER times
44	Cancer screening and treatment - starting younger	122	Dentist accepting Medicaid
45	Smoke	123	More counseling for drug abusers / courts
46	Bullying outreach program	124	Obesity - healthier food options at affordable prices (community gardens)
47	Stigma about mental health	125	Better ER services - ambulance
48	Easy to get drugs	126	Homeless shelter
49	Drug abuse affecting families	127	ER wait times / patient satisfaction
50	Healthy food not priority in families	128	Medicaid dental coverage
51	Benton County - access to care deterred by living 20 miles from civilization - transportation	129	Smoking
52	Behavioral health services - drug abuse, suicide, expansion of peds psych, housing for homeless teens and young adults	130	Obesity (eating and exercise)
53	Developmental / behavioral for peds (i.e. applied behavioral analysis)	131	Mental health care access
54	Full urgent care 7 days / week	132	Legacy physician replacement
55	Public perception on use of emergency room	133	ABA therapists
56	Ability to keep more sick people at GVMH vs shipping them	134	Services for Autistic children / adults
57	Mental health	135	Emergency room - docs, wait times
58	Public health education	136	Affordability of services - Medicare / Medicaid / private insurance
59	Mental health services	137	Dental - accept Medicaid for adults
60	Access to facilities	138	Dentures - reasonable and coverage
61	Wait time	139	Homelessness
62	Continuity of care - aftercare	140	Domestic violence
63	Staffing of ambulance services - blackout, wait times	141	Employment - above minimum wage
64	Access is critical and limiting (i.e. transportation)	142	Food insecurity for services
65	Behavioral healthcare is lacking	143	ADA - Peds
66	Community needs to buy into their role in improving their health	144	ED public perception
67	Not enough urgent mental / behavioral	145	Low-income dental
68	Nutrition education	146	Access to dental services for Medicaid
69	Personal responsibility (healthcare and otherwise)	147	Lack of public transportation

Community Health Needs Assessment

Golden Valley Memorial Healthcare PSA - Weakness (Color Cards) N=35

#	Today: What are the weaknesses of our community that contribute to health?	#	Today: What are the weaknesses of our community that contribute to health?
70	More community info on specialty services for health care	148	ED wait times
71	Tutors / community resources available on Chamber website to improve community education	149	Low-income dental access
72	Increase availability for walk-in / urgent vs ED	150	Emergency department public perception - wait time
73	Dental services for underinsured	151	Lack of public transportation
74	Need more collaboration with Universities and more trade school opportunities locally	152	Homelessness
75	Drug abuse	153	Underemployment
76	Obesity	154	Food insecurity
77	ER wait time / timely updates	155	Improved transportation
78	Specialty services (Pulmonary, Derm) - need increased availability		

Public Notice and Invitation

[VVV Consultants LLC]

V. Detail Exhibits
c) Public Notice and News

Round #2 Community Health Needs Assessment – Golden Valley Memorial Healthcare

Media Release 09/19/2016

Contact: Jessie Goodbrake, (660) 885-5511

Over the next three months, Golden Valley Memorial Healthcare will be partnering with Henry County Health Center and Compass Health Network to update the 2014 Golden Valley Memorial Healthcare (Primary Service Area) Community Health Needs Assessment (CHNA).

The goal of this assessment update is to understand progress in addressing community health needs cited in the 2014 CHNA report and to collect up-to-date community health perceptions. To accomplish this work, a short online survey has been developed:
https://www.surveymonkey.com/r/CHNA_GVMH

All community residents and business leaders are encouraged to **complete the 2016 online CHNA survey by Monday, October 24** and to attend the upcoming scheduled **Town Hall on Tuesday, November 1 from 5:30-7:00pm at the Clinton Elks Lodge.**

“This work is key to determine health direction for our county. We hope that all community stakeholders will take advantage of this opportunity to provide input into the future of healthcare delivery in our community” added Randy Wertz, CEO at Golden Valley Memorial Healthcare.

Vince Vandehaar, MBA (VVV Consultants LLC, an independent research firm from Olathe, Kansas) has been retained to conduct this countywide research. If you have any questions about CHNA activities, please call (660) 885-5511.

From: Randy Wertz

Date: September 19, 2016

To: Community Leaders, Providers and Hospital Board and Staff

Subject: CHNA Round #2 Online Survey 2017

Golden Valley Memorial Healthcare is partnering with Henry County Health Center and Compass Health Network to update the 2014 Golden Valley Memorial Healthcare (Primary Service Area) Community Health Needs Assessment.

Your feedback and suggestions regarding community health delivery are very important to collect in order to complete our 2017 Community Health Needs Assessment and Implementation Plan.

To accomplish this work, a short online survey has been developed:
https://www.surveymonkey.com/r/CHNA_GVMH

The CHNA Round #2 online survey due date is Monday, October 24, 2016. All responses are confidential. Thank you in advance for your time and support in participating with this important request.

Also, please hold **Tuesday, November 1, 2016 to attend the CHNA Round #2 Town Hall** from 5:30-7:00 p.m. at the Clinton Elks Lodge. A light dinner will be provided starting at 5:00 p.m.

Sincerely,

Randy Wertz
CEO

News Release
Date: October 11, 2016
Contact: Jessie Goodbrake, 660-890-8450

Local Healthcare Providers to hold Town Hall Meeting

Your help is needed to decide which local healthcare issues need the most attention.

Golden Valley Memorial Healthcare, the Henry County Health Center and Compass Health Network are working together to update the 2014 Community Health Needs Assessment.

We'd like to hear from you to determine which healthcare issues have the greatest impact on the community. A short online survey can be found at GVMH.org. Please consider participating. You have until Monday, Oct. 24, to voice your opinions.

A town hall will be held on Tuesday, Nov. 1, from 5:30-7:00pm at the Clinton Elks Lodge as a follow up to the survey. A light dinner will be provided and everyone is welcome to attend.

Please contact Jessie Goodbrake, 660-890-8450, with questions regarding the assessment or the town hall meeting.

Golden Valley Memorial Healthcare, Henry County Health Center and Compass Health Network -

**Subject: Hold the Date
Community Health Needs Assessment - Town Hall Tuesday,
November 1 at 5:30 p.m.**

Golden Valley Memorial Healthcare, Henry County Health Center and Compass Health Network are working on updating the required 2014 Community Health Needs Assessment (CHNA). The goal of this assessment update is to understand progress in addressing community health needs cited in the 2014 CHNA report and to collect up-to-date community health perceptions.

To continue this work, Golden Valley Memorial Healthcare, Henry County Health Center and Compass Health Network will host a **Town Hall meeting on Tuesday, November 1 from 5:30-7p.m. at Clinton Elks Lodge. Please plan to attend.** A light dinner will be provided starting at 5p.m.

Contact: Jessie Goodbrake, (660) 885-5511



Community Health Needs Assessment

Henry County, MO Community Town Hall Meeting

Golden Valley Memorial Healthcare,
Henry County Health Center
and Compass Health Network
will be sponsoring a Town Hall meeting
on Tuesday, November 1
from 5:30 to 7:00 p.m.
at the Clinton Elks Lodge.

All Henry County, MO residents are invited to
attend.
A light dinner will be provided starting at 5p.m.

Please join us for this opportunity to share your opinions
and suggestions to improve health care delivery
in Henry County, MO.

Thank you in advance for your participation.

Detail Primary Research Primary Service Area

[VVV Consultants LLC]

V. Detail Exhibits

d) Primary Research Detail

Methodology

A community feedback survey was created on behalf of the CHNA client to gather primary service area stakeholder feedback on health perceptions and progress in addressing previous CHNA community needs. All community residents were encouraged to take the survey online by entering the following address into their personal browser:
https://www.surveymonkey.com/r/CHNA_GVMH.

In addition, an invite letter was sent to all primary service area stakeholders (i.e. Schools, County, City, Clergy, Public Health Leaders).

Below is a summary of public response:

Golden Valley Memorial Healthcare (PSA) - Clinton, MO N=349			
11. For reporting purposes, are you involved in or are you a ...?	Option C Stakeholders Round #2 Bottom 2 Boxes	GVMH PSA N=349	Henry County N=205
Board Member	4.4%	2.4%	2.8%
Business / Merchant	6.2%	5.2%	5.7%
Case Manager / Discharge	0.7%	0.0%	0.0%
Charitable Foundation	5.3%	4.1%	4.9%
Civic Club / Chamber	2.7%	2.4%	2.6%
Clergy / Congregational Leader	1.4%	0.9%	0.8%
College / University	2.6%	1.7%	1.8%
Consumer Advocate	1.2%	0.4%	0.5%
Consumers of Health Care	9.1%	9.2%	8.7%
Dentist	0.3%	0.2%	0.3%
Economic Development	1.5%	0.9%	1.0%
Education Official / Teacher	5.3%	11.4%	11.6%
Elected Official (City / County)	1.6%	1.5%	1.8%
EMS / Emergency	1.4%	1.3%	1.0%
Farmer / Rancher	4.1%	3.9%	3.9%
Health Department	1.7%	0.2%	0.3%
Hospital	12.3%	11.8%	12.6%
Housing / Builder	0.4%	0.7%	0.8%
Insurance	1.1%	0.7%	0.8%
Labor	1.2%	0.9%	1.0%
Law Enforcement	0.6%	0.2%	0.3%
Low Income / Free Clinics	0.8%	0.4%	0.5%
Media (Paper, TV, Radio)	0.6%	1.5%	1.5%
Mental Health	3.5%	9.4%	8.0%
Nursing	8.2%	3.9%	3.9%
Other Health Professional	9.7%	15.1%	14.7%
Parent / Caregiver	0.5%	1.1%	1.0%
Pharmacy	1.0%	0.7%	0.8%
Physician (MD / DO)	1.5%	2.4%	2.3%
Physician Clinic	1.4%	0.2%	0.3%
Senior Care / Nursing Home	1.2%	1.7%	1.3%
Social Worker	1.9%	2.0%	1.8%
Veteran	0.8%	1.1%	0.8%
Welfare / Social Service	3.7%	0.4%	0.3%
Other (please specify)	7.3%	2.6%	1.8%
TOTAL	100.0%	100.0%	100.0%

KEY - CHNA Open End Comments				
CODE	Physician Specialty		CODE	Physician Specialty
ALLER	Allergy/Immunology		ONC	Oncology/Radiation Oncology
AES	Anesthesia/Pain		OPHTH	Ophthalmology
CARD	Cardiology		ORTH	Orthopedics
DERM	Dermatology		ENT	Otolaryngology (ENT)
EMER	Emergency		PATA	Pathology
ENDO	Endocrinology		PEDS	Pediatrics
FP	Family Practice (General)		PHY	Physical Medicine/Rehabilitation
GAS	Gastroenterology		PLAS	Plastic/Reconstructive
SUR	General Surgery		PSY	Psychiatry
GER	Gerontology		PUL	Pulmonary
HEM	Hematology		RAD	Radiology
IFD	Infectious Diseases		RHE	Rheumatology
IM	Internal Medicine		VAST	Thoracic/Cardiovascular/Vascular
NEO	Neonatal/Perinatal		URL	Urology
NEP	Nephrology		MDLV	Mid-Level
NEU	Neurology		SURG	Surgery
NEUS	Neurosurgery		TEL	Telemedicine
OBG	Obstetrics/Gynecology (Delivery)			

KEY - CHNA Open End Comments				
Code	Healthcare Themes		Code	Healthcare Themes
VIO	Abuse/Violence		NURSE	More Nurse Availability
ACC	Access to Care		NEG	Neglect
AGE	Aging (Senior Care/Assistance)		NH	Nursing Home
AIR	Air Quality		NUTR	Nutrition
ALC	Alcohol		OBES	Obesity
ALT	Alternative Medicine		ORAL	Oral Surgery
ALZ	Alzheimer's		ORTHOD	Orthodontist
AMB	Ambulance Service		OTHR	Other
ASLV	Assisted Living		OP	Outpatient Services/Surgeries
AUD	Auditory		OZON	Ozone
BACK	Back/Spine		PAIN	Pain Management
BD	Blood Drive		PARK	Parking
BRST	Breastfeeding		PHAR	Pharmacy
CANC	Cancer		DOCS	Physicians
CHEM	Chemotherapy		FLU	Pneumonia / Flu
KID	Child Care		FOOT	Podiatrist
CHIR	Chiropractor		POD	Podiatrist
CHRON	Chronic Diseases		POV	Poverty
CLIN	Clinics (Walk-In, etc.)		PNEO	Prenatal

KEY - CHNA Open End Comments

Code	Healthcare Themes	Code	Healthcare Themes
COMM	Communication	PREV	Preventative Healthcare
CORP	Community Lead Healthcare	PRIM	Primary Care:
CONF	Confidentiality	PROS	Prostate
DENT	Dentists	DOH	Public Health Department
DIAB	Diabetes	QUAL	Quality of care
DIAL	Dialysis	REC	Recreation
DUP	Duplication of Services	RESP	Respiratory Disease
ECON	Economic Development	NO	Response "No Changes," etc.
EMER	Emergency Room	SANI	Sanitary Facilities
EMS	EMS	SNUR	School Nurse
EYE	Eye Doctor/Optomtrist	STD	Sexually Transmitted Diseases
FAC	Facility	SMOK	Smoking
FAM	Family Planning Services	SS	Social Services
FEM	Female (OBG)	SPEC	Specialist Physician care
FINA	Financial Aid	SPEE	Speech Therapy
FIT	Fitness/Exercise	STRK	Stroke
ALL	General Healthcare Improvement	DRUG	Substance Abuse (Drugs/Rx)
GEN	General Practice	SUIC	Suicide
GOV	Government	TPRG	Teen Pregnancy
HRT	Heart Care	THY	Thyroid
HIV	HIV/AIDS	TOB	Tobacco Use
HH	Home Health	TRAN	Transportation
HSP	Hospice	TRAU	Trauma
HOSP	Hospital	TRAV	Travel
MAN	Hospital Management	ALCU	Underage Drinking
INFD	Infidelity	INSU	Uninsured/Underinsured
IP	Inpatient Services	URG	Urgent Care/After Hours Clinic
LEAD	Lead Exposure	VACC	Vaccinations
BIRT	Low Birth Weight	VETS	Veteran Care
LOY	Loyalty	WAG	Wages
MAMO	Mammogram	WAIT	Wait Times
MRKT	Marketing	H2O	Water Quality
STFF	Medical Staff	WELL	Wellness Education/Health Fair
BH	Mental Health Services	WIC	WIC Program

CHNA Community Feedback 2016						
Golden Valley Memorial Healthcare (Primary Service Area) N=205						
ID	Zip	Overall HC Rating	c1	c2	c3	Are there healthcare services in the Golden Valley Memorial Healthcare Primary Service Area that you feel need to be improved and/or changed?
1026	64735	Fair	ACC	EMER	WAIT	Access to prompt ED services, quality ED services, and quality pre hospital care.
1015	64735	Fair	ACC	MAMM	WAIT	Scheduling for diagnostic mammogram should not take more than 2 weeks.
1059	64735	Good	BH	OBG	EMER	Mental Health for the community. More of it. Numbers are increasing in the OB and ER departments. Also increasing in severity. Law enforcement is being called on more cases in the ED
1029	64735	Good	BH	SUBST	ALC	Services for Mental Health, Alcohol and Drug abuse
1148	64735	Good	BH	SUBST		In my line of work situations come up and individuals need assistance with Mental Health or Substance Abuse, its very hard to get help with this. Most individuals and families are on their own.
1125	64735	Good	BH	SUBST		Mental Health is a much needed resource in our community, There are many patient's that have an Illicit drug problem, would like for our community to be more proactive than reactive.
1071	64735	Good	BH			Mental health services are needed.
1019	64735	Poor	BH			Mental health needs to be improved tremendously!
1130	64735	Fair	BH			psych
1022	64735	Very Good	BILL	CLIN	COMM	Billing at the clinic; communication between departments. Sometimes it seems the right hand doesn't know what the left hand is doing.
1124	64735	Very Good	CARD			Cardiac-such as cath lab/angio/stents...
1102	64735	Poor	CLIN	ACC	STAFF	Walk in clinic availability, qualified staffing, and benefits for health care professionals
1062	64735	Fair	CLIN	QUAL	EMER	I am a patient of the clinic and I can tell you that the care and attention is SUPERB! What I see as a teacher in the area of "community" is that many students I serve aren't getting their health care needs by their families or often something minor the students/parents report they went to the ER for. In minor needs this is a huge inflation of tax payer money when those on assistance are using the ER for matters that could be handled during the day or waiting a day or two for an appointment.
1103	64735	Good	CLIN	WAIT	EMER	More weekend walk in clinic hours to keep people out of the ER that are not experiencing emergencies. Make classes and help groups in evening hours for those that work day jobs.
1036	64735	Good	COMM	CLIN	DIET	There needs to be more coordination of services and an effort to refer patients to services such as wound clinic, dieticians, and physical therapy. We offer these services, but they are underutilized by providers.
1122	64735	Good	COMM	CLIN		Would like to see better communication between the hospital and clinic.
1120	64735	Good	CPR			Need free CPR classes
1152	64735	Fair	DENT	BILL	EMER	This area needs more based on income dental , even with GVMH dental its still hard to pay dental bills. People put their teeth off because of that and then it makes a worse problem . The E>R> needs better communication and help sometimes people that need help the most end up sitting in the waiting room for hrs.
1121	64735	Fair	DENT	COST	EMER	Dental services need to be added for needy patients as dental problems often go untreated, and negatively impact overall health and frequently causing individuals to use emergency department.

CHNA Community Feedback 2016						
Golden Valley Memorial Healthcare (Primary Service Area) N=205						
ID	Zip	Overall HC Rating	c1	c2	c3	Are there healthcare services in the Golden Valley Memorial Healthcare Primary Service Area that you feel need to be improved and/or changed?
1170	64735	Good	DENT	FAP		It would be nice to be able to see a dentist on the FAP.
1138	64735	Good	DENT			several patients ask about dental care
1145	64735	Very Good	DERM	CLIN	DOCS	We need more dermatology clinic doctors with the increased number of people needing this service! One day a week is just not enough to get everyone in before serious cancers get out of control!
1133	64735	Very Good	DERM			Add full time dermatology
1064	64735	Good	DERM			dermatologist
1054	64735	Fair	DERM			dermatology specialist
1025	64735	Good	DIAB	ED	SUBST	The Diabetic services could be improved with more education for the community. A drug and alcohol rehab facility seems to be a need.
1131	64735	Fair	DOCS	COMM		Doctors accurately identifying the issue and showing true concern for patients.
1097	64735	Fair	DOCS	PAIN	COMM	Visits with physicians are often rushed and patient needs, pains, and experiences are not carefully considered or examined as they should be.
1082	64735	Good	DOH	IMMUN	INSUR	Henry county health department needs to be able to administer vaccinations to all children not just low income and children on Medicare.
1193	65360	Fair	ED	DOCS		Improved, better educated drs
1016	64735	Good	ED	PRIM	EMER	Increased community education about primary care options, too reduce unneeded ER visits. Services are there, but people need to know.
1093	64735	Good	ED	QUAL		Education of the public as to what is available to them. I believe many would be gratified to know the quality of care that is available to them.
1087	64735	Very Good	EMER	BH	INSUR	ER visits that should be handled in a doctor office drug abuse (meth, THC) obesity Medicaid fraud GVMH needs more psych care available we need pediatric dentists that accept Medicaid
1109	64735	Fair	EMER	CLIN	COST	Many people in the community use the ED as their doctor because they cannot afford to pay at the clinics even if they are approved at 90% on the financial assistance. They do this because they do not have to pay the ED up front and can then set up payments of a small amount per month. Also, the clinics frequently tell patients to go to the ED because they are full--an appointment should be able to be made instead of costing the patients several hundred dollars.
1159	64735	Good	EMER	COMM		Emergency Department attitude and lack of compassion.
1129	64735	Good	EMER	COMM		The Emergency Room gets overwhelmed easily and does not communicate effectively with patients or among themselves.

CHNA Community Feedback 2016						
Golden Valley Memorial Healthcare (Primary Service Area) N=205						
ID	Zip	Overall HC Rating	c1	c2	c3	Are there healthcare services in the Golden Valley Memorial Healthcare Primary Service Area that you feel need to be improved and/or changed?
1039	64735	Poor	EMER	DOCS	STAFF	Emergency Room Services need to be overhauled. The doctors do not seem knowledgeable and seem very hurried to get people in/out without ensuring that full and proper care is received. The ER doctors claim to be generalists but most are seldom equipped (even seeming uncomfortable) to handle pediatric patients. The admitting personnel and EMT's working the desk at off-hours seem equally unfriendly and not interested in truly understanding the problem before admitting people. Patients being released from the ER only to have received zero treatment and a "cookie-cutter" printout of generalized medical conditions then simply told to follow up with their family practitioner is a waste of people's time and money. The ER doctors have even prescribed treatment that was incompatible with existing care and in several reports from colleagues indicate misdiagnosed conditions all too often. While the market may not support it, some type of urgent care or weekend clinic would be an incredible benefit to the community. Though the ER is not efficient or particularly helpful, people with sick children or intense symptoms have little choice except to use the ER, only to then be disappointed by the care received. The use of ER generalists & "hospitalists" often creates frustrating billing challenges for patients. Though the facility may be within insurance providers network, there is no way to know up front if the Doctors are. Patients shouldn't have to fight through so many appeals to get billing matters resolved, and the GVMH business office is inconsistent in helpfulness depending on the day, the person, and the situation. Additionally, the cost of local lab services needs to be made more competitive. Otherwise, patients should be notified that they have the option to have samples sent to external labs at a significantly reduced cost. Local GVMH lab services are often 10x higher cost than what is charged by regional and national laboratories. Economies of scale is understandable, but not informing patients of their options is not responsible of a provider that truly cares about its patients.
1147	64735	Good	EMER	DOCS		ER doctors
1004	64735	Poor	EMER	HOSP	COMM	The emergency room doctors are not providing the level of care that we need in Clinton. And the hospitalists do not know the patients or their medical history so it is very difficult for them to treat patients correctly and responsibly. The new emergency rooms are a big disappointment and waste of money. They should have been larger and improved and are not. Among other issues.
1208	65360	Good	EMER	IP	WAIT	Service needs to be improved in the ER and inpatient setting. Issues need to be addressed in a timely manner.
1207	65360	Good	EMER	OBG	WAIT	The Emergency Department needs continued improvement. Recently I went through the ER for a late night admission into OB. When we walked up to the ER doors there were about 6 people sitting in front of the doors smoking. As we walked in there was no one at the desk and we had to wait for about 20 minutes before anyone showed up (even after ringing the bell). Once we were in a very small admission office (my husband had to stand and hold all 3 of our bags just so there was enough room to shut the door), we waited for someone to come check us in. Once we were checked in we were escorted through the ER, where we not only heard almost everything that was going on with 2 patients but we also saw almost every patient that was in the ER. While being escorted to the OB, being 9 months pregnant I was never offered a wheel chair and the walk was way too long, we went through all of the new parts of the hospital all the way to the old elevators at the main entrance. When I got to OB I had to wait to be re-admitted because the admission process was done wrong.

CHNA Community Feedback 2016						
Golden Valley Memorial Healthcare (Primary Service Area) N=205						
ID	Zip	Overall HC Rating	c1	c2	c3	Are there healthcare services in the Golden Valley Memorial Healthcare Primary Service Area that you feel need to be improved and/or changed?
1047	64735	Fair	EMER	PEDS	ORTHO	I think that we need to be able to treat minor medical emergencies for your area children, broken bones, hernia's locally instead of transporting all children up to Kansas City.
1123	64735	Good	EMER	QUAL	WAIT	Emergency Department services. Poor care provided. Common for long wait times.
1156	64735	Good	EMER	QUAL		The ER still misses diagnoses and send patients home only for them to return with a serious condition. In once case, the lady was experiencing an 8 day heart attack and they said it was acid reflex. She is still not strong enough to handle a 3rd stint put in. This is a common thing at the ER
1177	64740	Poor	EMER	STAFF	COMM	e.r. the staff does not have compassion. Its like they are being bothered by our presents very rude. .
1098	64735	Good	EMER	STAFF	DOCS	Emergency Room needs to be operated solely by GVMH with staff physicians and other health professionals.
1066	64735	Good	EMER	WAIT	DOCS	Emergency room services are in need of improvement. Response time is awful and slow. Doctors in the emergency room are not the best; you can tell from the quality (of lack thereof) of service. You're better off being treated by the nursing staff, which is wonderful!
1084	64735	Fair	EMER	WAIT	QUAL	Emergency room - extreme wait, poor care, lots of mis-diagnosis

CHNA Community Feedback 2016						
Golden Valley Memorial Healthcare (Primary Service Area) N=205						
ID	Zip	Overall HC Rating	c1	c2	c3	Throughout the past two years, did you or someone you know receive healthcare services outside of the Golden Valley Memorial Healthcare Primary Service Area?
1103	64735	Good	BH	IP	REHAB	Psychiatric inpatient care and stroke rehab.
1078	64735	Fair	BLOOD			bloodwork, yearly
1130	64735	Fair	CANC	BH		Cancer treatment & mental health
1148	64735	Good	CANC	BIOP		My mother was treated for a previous breast cancer and had a biopsy.
1163	64735	Good	CANC	SURG		Cancer surgery
1195	65360	Good	CANC			Cancer care
1083	64735	Good	CANC			Cancer services
1076	64735	Very Good	CARD	ENDO		Cardiology, but since that time there is 5 day a week coverage! Also, endocrinology was a need and not in this area.
1182	64770	Fair	CARD	NEUR	SURG	Cardiology, Neurosurgery
1159	64735	Good	CARD	PEDS		Heart care, pediatric hospital
1057	64735	Good	CARD	REHAB	STLK	Cardiac rehab at St Luke's- KC
1009	64735	Poor	CARD			Cardiac
1110	64735	Very Good	CARD			Cardiac care
1096	64735	Fair	CARD			Cardiology
1117	64735	Good	CARD			Cardiology
1157	64735	Very Good	CARD			CV
1156	64735	Good	CHIRO	ORTHO		chiropractic, orthopedic
1178	64740	Good	CM	ALL	PLAS	children's mercy hospital both allergy services and plastics
1208	65360	Good	CM			Children's Mercy because the services needed are not offered here.
1055	64735	Very Good	CM			Children's Mercy Hospital
1115	64735	Good	CM			Children's Mercy Hospital specialty services
1094	64735	Good	COLON	CANC	OBG	colonoscopy, cancer treatment, obstetrics.
1025	64735	Good	COLON	SURG		Colorectal surgery
1089	64735	Good	COLON			colonoscopy
1072	64735	Fair	DENT	SURG		dental surgery
1105	64735	Good	DENT			oral dentistry
1122	64735	Good	DERM	ALL	PEDS	Dermatology, allergy & asthma, pediatric care
1098	64735	Good	DERM	ENT	OPHTH	Dermatologist, ENT, Ophthalmology
1161	64735	Good	DERM	OPHTH	CARD	Dermatology, Ophthalmology, Cardiology
1054	64735	Fair	DERM			dermatology
1204	65360	Fair	DERM			Dermatology
1048	64735	Poor	DIAB	CARD	REHAB	diabetic counseling, cardiac rehab,
1029	64735	Good	DIAB			diabetic services
1177	64740	Poor	EMER	LAB	RAD	went to a different e.r. had labs and CT scan done and they found cancer .found out I was dealing with cancer and didn't know it.

CHNA Community Feedback 2016						
Golden Valley Memorial Healthcare (Primary Service Area) N=205						
ID	Zip	Overall HC Rating	c1	c2	c3	Throughout the past two years, did you or someone you know receive healthcare services outside of the Golden Valley Memorial Healthcare Primary Service Area?
1033	64735	Fair	EMER	PAIN	PEDS	Emergency Care, Pain Control Services, Pediatric Services, Neurology Services
1170	64735	Good	EMER	PNEU	BOTH	ER for pneumonia at Bothwell
1113	64735	Good	EMER			Emergency Room
1004	64735	Poor	EMER			Emergency room care.
1068	64735	Good	EMER			emergency room visit
1176	64740	Very Good	EMER			Emergency Services
1023	64735	Fair	EMER			ER visit
1181	64770	Good	ENDO	PEDS	BH	endocrinology, pediatric mental health
1035	64735	Very Good	ENDO			Endocrinologist
1133	64735	Very Good	ENDO			endocrinology
1187	64788	Good	ENT	ORTHO		ENT for nasal blockage, meniscus repair, knee replacement,
1005	64735	Good	ENT	WAIT		ENT - wait time was too long here at GVMH
1064	64735	Good	ENT			ENT
1165	64735	Good	FERT			Fertility
1189	65323	Fair	GALL	SURG		Gall Bladder Removal Surgery
1081	64735	Good	GALL			Gallstone removed from bile duct
1045	64735	Fair	GP			ALL
1002	64726	Good	IP	HOS	STLK	Hospital, hospice care, St. Luke's Kansas City
1040	64735	Poor	IP	OP		Hospital and Physician care
1121	64735	Fair	IP	SEP		Hospitalization for sepsis
1197	65360	Good	IP			inpatient medical treatment
1037	64735	Good	KC	CANC	CARD	I have several friends who received services in Kansas City for cancer treatment, heart treatment and one family member who goes there for her mental health needs.
1124	64735	Very Good	KC	SURG	CANC	Some family had to go to KC for surgery/some chemo
1090	64735	Fair	KC			Kansas City
1049	64735	Good	KC			Many people go to KC for healthcare services. Normal.
1206	65360	Good	KU			K U Medical Center
1173	64735	Good	NEUR	SURG	RAD	Neurosurgery/MRI/Stroke and Cancer Treatment
1109	64735	Fair	NEUR	SURG		neurosurgery
1125	64735	Good	NEUR			Neurology, specialist
1085	64735	Fair	OBG	PEDS		Obstetrical, child specialty
1172	64735	Good	OBG	RAD		hysterectomy, MRI
1028	64735	Fair	OBG	RHEU		gyno, rheumatologist
1120	64735	Good	OBG			GYN
1135	64735	Good	OBG			OB care
1097	64735	Fair	OBG			OBGYN

CHNA Community Feedback 2016						
Golden Valley Memorial Healthcare (Primary Service Area) N=205						
ID	Zip	Overall HC Rating	c1	c2	c3	Throughout the past two years, did you or someone you know receive healthcare services outside of the Golden Valley Memorial Healthcare Primary Service Area?
1158	64735	Good	ONC	CARD	SURG	Oncology, cardiology, and surgical services
1126	64735	Good	ONC	OBG		Oncology and women's health
1060	64735	Fair	ONC	SURG		oncologists, surgeons
1169	64735	Very Good	ONC			oncology
1171	64735	Very Good	OPHTH	CARD	CM	ophthalmology and cardiology for my 3 year olds and eye surgery for both of my 3 year olds at Children's Mercy. Delivered 10 week early twins with a 3 month NICU stay at Overland Park Regional.
1022	64735	Very Good	ORAL	SURG	CANC	Oral surgery; cancer and cardiac care and ob/gyn
1070	64735	Fair	ORAL	SURG	DENT	Oral surgery, surgery in general, and dental services due to receiving poor dental here locally.
1134	64735	Good	ORAL	SURG	GAS	oral surgeon and gastroenterologist
1201	65360	Very Good	ORTHO	DENT	DERM	Orthopedic evaluation, Dental. Dermatology.
1003	64735	Poor	ORTHO	SURG		Yes, a knee surgery.
1179	64740	Good	ORTHO			Orthopedic
1087	64735	Very Good	PEDS	CM	ORTHO	pediatric- Children's Mercy Hospital Orthopedics
1123	64735	Good	PEDS	IP	GAS	Pediatric hospitalization. Advanced gastrointestinal services (ERCP). Advanced neurologic services.
1039	64735	Poor	PEDS	LAB	RAD	Pediatric care for children, diagnostic lab and diagnostic imaging services
1200	65360	Fair	PEDS	PULM	ORTHO	pediatric pulmonary, ped orthopedic, ped cardiology
1091	64735	Very Good	PEDS	PULM		GVMH sent my child to pulmonary specialist
1047	64735	Fair	PEDS	SURG		Children's surgery
1164	64735	Good	PEDS			Children's Specialties
1207	65360	Good	PEDS			Pediatric Specialty
1140	64735	Good	PLAS	SURG		plastic surgery
1196	65360	Good	POD	DENT		Podiatry and dentistry
1146	64735	Good	POD			Podiatry
1199	65360	Fair	PRIM	CANC	DENET	routine check-ups, cancer treatments, diagnostic screenings, dental visits, vision screenings
1080	64735	Very Good	PRIM	OBG	SURG	primary care, obstetrics, surgical services, emergency, imaging, laboratory,
1112	64735	Good	PRIM	SURG		Routine Health and Surgical Intervention
1184	64770	Good	PRIM			Primary Care
1104	64735	Very Good	PULM	CARD	SURG	Pulmonary, Cardiovascular Surgery, Infectious Disease, Nephrology
1111	64735	Fair	PULM	CARD		Pulmonary testing. Heart echo
1180	64770	Good	PULM			pulmonary consult
1046	64735	Good	PULM			pulmonologist
1062	64735	Fair	RAD	LAB		MRI, lab work, x-ray
1065	64735	Poor	RHEU	KC	IM	Rheumatologist at Kansas City Internal Medicine

Community Health Needs Assessment 2017 - Golden Valley Memorial Healthcare (Primary Service Area)

Let Your Voice Be Heard!

Golden Valley Memorial Healthcare, in collaboration with Henry County Health Center and Compass Health Network, is updating the 2014 Golden Valley Memorial Healthcare (Primary Service Area) Community Health Needs Assessment (CHNA). Your feedback from this survey will help us identify the current health issues in our community and while your participation is voluntary, we would greatly appreciate your input. All answers will be kept confidential.

All 2017 Community Health Needs Assessment feedback is due by Monday, October 24. Thank you for your participation.

Community Health Needs Assessment 2017 - Golden Valley Memorial Healthcare (Primary Service Area)

Part I: Introduction

1. Three years ago, Golden Valley Memorial Healthcare, Henry County Health Center and Compass Health Network completed a Community Health Needs Assessment (CHNA). This assessment identified a number of health needs for our community. Today, we are updating this assessment and would like to know how you rate the "Overall Quality" of healthcare delivery in our community?

	Very Good	Good	Fair	Poor	Very Poor
Health Rating:	<input type="radio"/>	<input type="radio"/>	<input type="radio"/>	<input type="radio"/>	<input type="radio"/>

Community Health Needs Assessment 2017 - Golden Valley Memorial Healthcare (Primary Service Area)

2. Are there healthcare services in the Golden Valley Memorial Healthcare Primary Service Area that you feel need to be improved and/or changed? (Please be specific.)

Community Health Needs Assessment 2017 - Golden Valley Memorial Healthcare (Primary Service Area)

3. From our last CHNA (2014), a number of health needs were identified as priorities. Are any of these 2014 CHNA needs still an "Ongoing Problem" in the Golden Valley Memorial Healthcare Primary Service Area?

	Not a Problem Anymore	Somewhat of a Problem	Major Problem
Reduce Obesity (Fitness / Nutrition)	<input type="radio"/>	<input type="radio"/>	<input type="radio"/>
Reduce Smoking	<input type="radio"/>	<input type="radio"/>	<input type="radio"/>
Drug Abuse	<input type="radio"/>	<input type="radio"/>	<input type="radio"/>
Lessen Emergency Room Wait Times	<input type="radio"/>	<input type="radio"/>	<input type="radio"/>
Provide Local Oral Surgeon Services	<input type="radio"/>	<input type="radio"/>	<input type="radio"/>
Expand Pediatric Care Services	<input type="radio"/>	<input type="radio"/>	<input type="radio"/>
Increase Mental Health Delivery (Access / Placement)	<input type="radio"/>	<input type="radio"/>	<input type="radio"/>
Encourage Parental Guidance	<input type="radio"/>	<input type="radio"/>	<input type="radio"/>
Increase Visiting Specialists (Pediatrics / Oncology / Psychiatry / Dermatology / Orthopedics / Urology)	<input type="radio"/>	<input type="radio"/>	<input type="radio"/>
Improve Quality of Nursing Home Care Services	<input type="radio"/>	<input type="radio"/>	<input type="radio"/>
Increase Number of Dentists Accepting Medicaid	<input type="radio"/>	<input type="radio"/>	<input type="radio"/>
Expand Community Wellness Education	<input type="radio"/>	<input type="radio"/>	<input type="radio"/>

Community Health Needs Assessment 2017 - Golden Valley Memorial Healthcare (Primary Service Area)

4. Which 2014 CHNA health needs are most pressing today for improvement? (Please select top three needs.)

- | | |
|---|---|
| <input type="checkbox"/> Reduce Obesity (Fitness / Nutrition) | <input type="checkbox"/> Increase Mental Health Delivery (Access / Placement) |
| <input type="checkbox"/> Reduce Smoking | <input type="checkbox"/> Encourage Parental Guidance |
| <input type="checkbox"/> Drug Abuse | <input type="checkbox"/> Increase Visiting Specialists (Pediatrics / Oncology / Psychiatry / Dermatology / Orthopedics / Urology) |
| <input type="checkbox"/> Lessen Emergency Room Wait Times | <input type="checkbox"/> Improve Quality of Nursing Home Care Services |
| <input type="checkbox"/> Provide Local Oral Surgeon Services | <input type="checkbox"/> Increase Number of Dentists Accepting Medicaid |
| <input type="checkbox"/> Expand Pediatric Care Services | <input type="checkbox"/> Expand Community Wellness Education |

Community Health Needs Assessment 2017 - Golden Valley Memorial Healthcare (Primary Service Area)

5. How would you rate each of the following services offered in the Golden Valley Memorial Healthcare Primary Service Area? (Please select one box per row.)

	Very Good	Good	Fair	Poor	Very Poor	N/A
Ambulance Services	<input type="radio"/>	<input type="radio"/>	<input type="radio"/>	<input type="radio"/>	<input type="radio"/>	<input type="radio"/>
Behavioral Health Inpatient Services	<input type="radio"/>	<input type="radio"/>	<input type="radio"/>	<input type="radio"/>	<input type="radio"/>	<input type="radio"/>
Behavioral Health Outpatient Services	<input type="radio"/>	<input type="radio"/>	<input type="radio"/>	<input type="radio"/>	<input type="radio"/>	<input type="radio"/>
Child Care	<input type="radio"/>	<input type="radio"/>	<input type="radio"/>	<input type="radio"/>	<input type="radio"/>	<input type="radio"/>
Chiropractors	<input type="radio"/>	<input type="radio"/>	<input type="radio"/>	<input type="radio"/>	<input type="radio"/>	<input type="radio"/>
Dentists	<input type="radio"/>	<input type="radio"/>	<input type="radio"/>	<input type="radio"/>	<input type="radio"/>	<input type="radio"/>
Emergency Room	<input type="radio"/>	<input type="radio"/>	<input type="radio"/>	<input type="radio"/>	<input type="radio"/>	<input type="radio"/>
Eye Doctor / Optometrist	<input type="radio"/>	<input type="radio"/>	<input type="radio"/>	<input type="radio"/>	<input type="radio"/>	<input type="radio"/>
Family Planning Services	<input type="radio"/>	<input type="radio"/>	<input type="radio"/>	<input type="radio"/>	<input type="radio"/>	<input type="radio"/>
Home Health	<input type="radio"/>	<input type="radio"/>	<input type="radio"/>	<input type="radio"/>	<input type="radio"/>	<input type="radio"/>

Community Health Needs Assessment 2017 - Golden Valley Memorial Healthcare (Primary Service Area)

6. How would you rate each of the following services offered in the Golden Valley Memorial Healthcare Primary Service Area? (Please select one box per row.)

	Very Good	Good	Fair	Poor	Very Poor	N/A
Hospice	<input type="radio"/>	<input type="radio"/>	<input type="radio"/>	<input type="radio"/>	<input type="radio"/>	<input type="radio"/>
Medical Inpatient Services	<input type="radio"/>	<input type="radio"/>	<input type="radio"/>	<input type="radio"/>	<input type="radio"/>	<input type="radio"/>
Medical Outpatient Services	<input type="radio"/>	<input type="radio"/>	<input type="radio"/>	<input type="radio"/>	<input type="radio"/>	<input type="radio"/>
Mental Health Services	<input type="radio"/>	<input type="radio"/>	<input type="radio"/>	<input type="radio"/>	<input type="radio"/>	<input type="radio"/>
Nursing Home	<input type="radio"/>	<input type="radio"/>	<input type="radio"/>	<input type="radio"/>	<input type="radio"/>	<input type="radio"/>
Pharmacy	<input type="radio"/>	<input type="radio"/>	<input type="radio"/>	<input type="radio"/>	<input type="radio"/>	<input type="radio"/>
Primary Care	<input type="radio"/>	<input type="radio"/>	<input type="radio"/>	<input type="radio"/>	<input type="radio"/>	<input type="radio"/>
Public Health Department	<input type="radio"/>	<input type="radio"/>	<input type="radio"/>	<input type="radio"/>	<input type="radio"/>	<input type="radio"/>
School Nurse	<input type="radio"/>	<input type="radio"/>	<input type="radio"/>	<input type="radio"/>	<input type="radio"/>	<input type="radio"/>
Specialists	<input type="radio"/>	<input type="radio"/>	<input type="radio"/>	<input type="radio"/>	<input type="radio"/>	<input type="radio"/>

Community Health Needs Assessment 2017 - Golden Valley Memorial Healthcare (Primary Service Area)

7. In your own words, what is the general community perception of healthcare providers (i.e. Doctors, Health Department, Hospital, Mental Health Services, etc.) serving Golden Valley Memorial Healthcare Primary Service Area residents?

Community Health Needs Assessment 2017 - Golden Valley Memorial Healthcare (Primary Service Area)

8. Throughout the past two years, did you or someone you know receive healthcare services outside of the Golden Valley Memorial Healthcare Primary Service Area?

Yes

Don't Know

No

If yes, please specify the healthcare services received.

Community Health Needs Assessment 2017 - Golden Valley Memorial Healthcare (Primary Service Area)

9. Are there any other health needs from the list below that need to be discussed at our upcoming CHNA Town Hall meeting? (Please select top three that need to be on our agenda.)

Abuse / Violence

Mental Illness

Sexually Transmitted Diseases

Alcohol

Nutrition

Suicide

Cancer

Obesity

Teen Pregnancy

Diabetes

Ozone (Air)

Tobacco Use

Drugs / Substance Abuse

Physical Exercise

Vaccinations

Family Planning

Poverty

Water Quality

Heart Disease

Respiratory Disease

Wellness Education

Lead Exposure

Restaurant Inspections

Other (please specify)

Community Health Needs Assessment 2017 - Golden Valley Memorial Healthcare (Primary Service Area)

* 10. What is your home zip code?

Community Health Needs Assessment 2017 - Golden Valley Memorial Healthcare (Primary Service Area)

Demographics

11. For reporting purposes, are you involved in or are you a ...? (Please select all that apply.)

- | | | |
|---|---|---|
| <input type="checkbox"/> Board Member | <input type="checkbox"/> Elected Official - City / County | <input type="checkbox"/> Other Health Professional |
| <input type="checkbox"/> Business / Merchant | <input type="checkbox"/> EMS / Emergency | <input type="checkbox"/> Parent / Caregiver |
| <input type="checkbox"/> Case Manager / Discharge Planner | <input type="checkbox"/> Farmer / Rancher | <input type="checkbox"/> Pharmacy |
| <input type="checkbox"/> Civic Club / Chamber | <input type="checkbox"/> Health Department | <input type="checkbox"/> Physician (MD / DO) |
| <input type="checkbox"/> Charitable Foundation | <input type="checkbox"/> Hospital | <input type="checkbox"/> Physician Clinic |
| <input type="checkbox"/> Clergy / Congregational Leader | <input type="checkbox"/> Housing / Builder | <input type="checkbox"/> Media (Paper, TV, Radio) |
| <input type="checkbox"/> College / University | <input type="checkbox"/> Insurance | <input type="checkbox"/> Senior Care / Nursing Home |
| <input type="checkbox"/> Consumer Advocate | <input type="checkbox"/> Labor | <input type="checkbox"/> Social Worker |
| <input type="checkbox"/> Consumers of Healthcare | <input type="checkbox"/> Law Enforcement | <input type="checkbox"/> Veteran |
| <input type="checkbox"/> Dentist | <input type="checkbox"/> Low Income / Free Clinics | <input type="checkbox"/> Welfare / Social Service |
| <input type="checkbox"/> Economic Development | <input type="checkbox"/> Mental Health | |
| <input type="checkbox"/> Education Official / Teacher | <input type="checkbox"/> Nursing | |
| <input type="checkbox"/> Other (please specify) | | |

Community Health Needs Assessment 2017 - Golden Valley Memorial Healthcare (Primary Service Area)

You have just completed the Community Health Needs Assessment Survey. Thank you for your participation.

By selecting "Done," you are submitting your responses and giving others an opportunity to complete the same survey. Again, thank you for your participation.

CHNA Report Contact :



Vince Vandelaar, MBA
VVV Consultants LLC
***Adjunct Professor / Professional Healthcare
Marketing and Strategic Planning Consulting
Services***

***601 N Mahaffie, Olathe, KS 66061
(913) 302-7264 (C)
VVV@VandelaarMarketing.com***

***LinkedIn: vandelaar
Website: VandelaarMarketing.com***